

DESIGNER DIAMOND™ SERIES • DESIGNER RUBY™ SERIES
DESIGNER TOPAZ™ SERIES • SAPPHIRE™ SERIES • OPAL™ SERIES

CIRCULAR ATTACHMENT

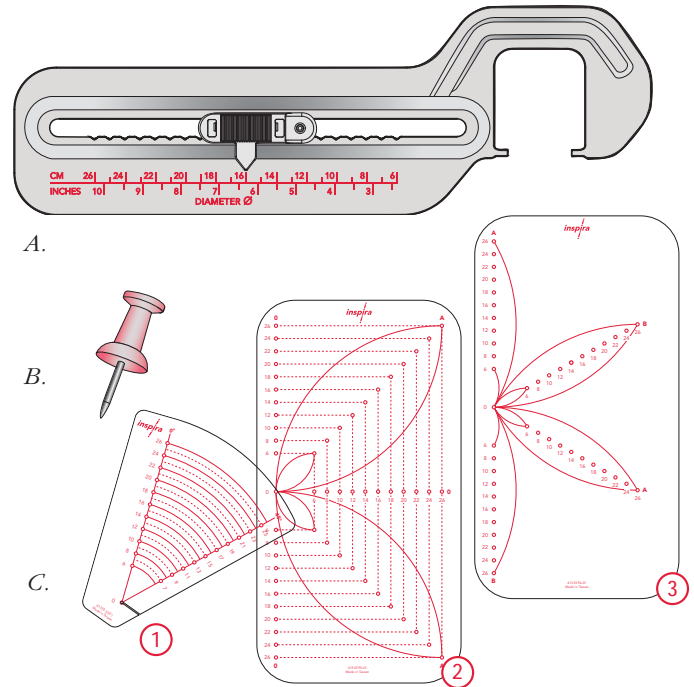
CIRCULAR ATTACHMENT

Your Circular Attachment is the perfect tool when you want to make unique embellishments on your sewing projects, garments and quilts. You can sew simple circles, flowers, or parts of circles to create unique borders or graphic patterns. Combine circles in different sizes and create large patterns. Almost all utility or decorative stitches* can be used when stitching with this attachment so you are free to use your favorite. The possibilities available with the Circular Attachment are as unending as the circles it creates!

*Stitches with a default stitch width wider than 7mm, and stitches with backward feeding cannot be used.

IN THE PACKAGE YOU WILL FIND:

- A. Circular Attachment with Size Guide
- B. Pivot Pin
- C. Three different templates: one for sewing circles (1), one for a four-petal flower (2) and one for a six-petal flower (3). The numbers on the templates correspond to the diameter of the circle (in cm)
- D. CD with User Instructions in 11 languages, a tutorial and ideas on how to combine circles using the templates



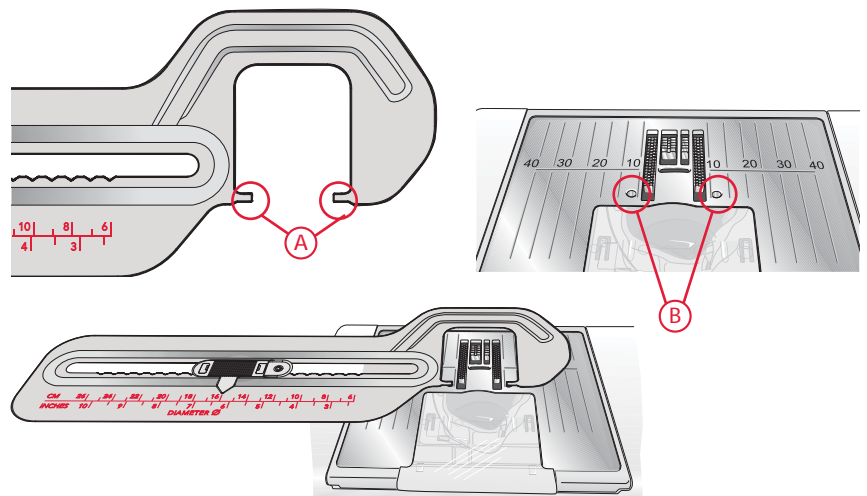
With the Circular Attachment, you can sew circles with a diameter measuring from 6 cm up to 26 cm (2½ to 10¼”). The diameters of the circles are printed in both centimeters and inches.

SNAP ON THE CIRCULAR ATTACHMENT

It is easy to snap on the Circular Attachment to your sewing machine.

Raise the presser foot and slide the attachment under the presser foot.

Snap the two hooks (A) on the attachment into the two holes (B) on the stitchplate.



Note: If your machine features an automatic thread cutting function, we recommend that it is not used when the Circular Attachment is snapped on.

SET THE SIZE OF THE CIRCLE

The size of the circle is set by positioning the tip (D) of the SizeGuide above the number that corresponds to the diameter of your circle.

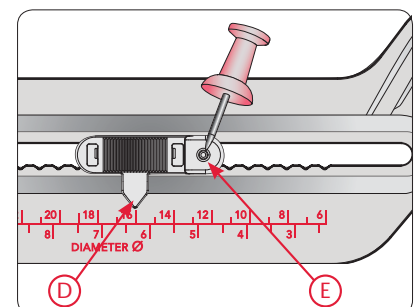
Note: The diameter on the scale is the diameter of the circle if sewn with straight stitch, center position.

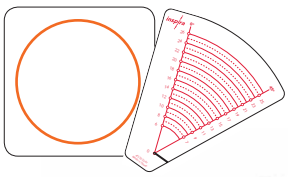
To move the SizeGuide, hold the attachment with your right hand and move the guide with your left.

Note: If moving the SizeGuide unit by holding the pivot pin, the pivot pin can bend or break.

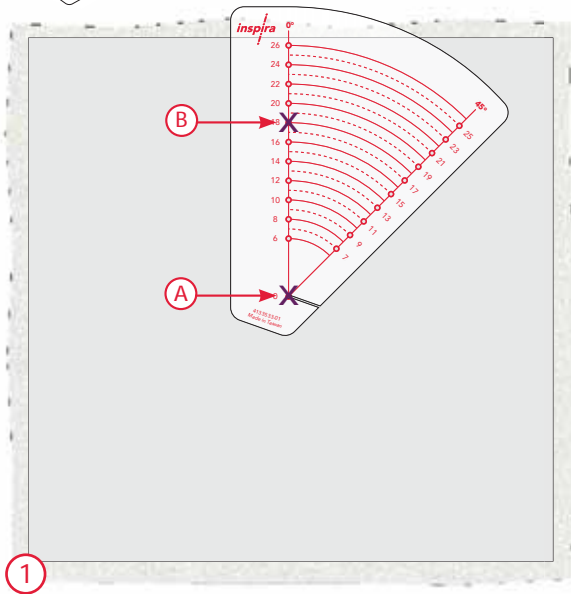
When the size is set, place stabilizer underneath the fabric and slide both fabric and stabilizer under the presser foot.

Push the pivot pin through the fabric at the center of the circle. Place the pivot pin in the hole on the SizeGuide (E). Lower the presser foot and start sewing.

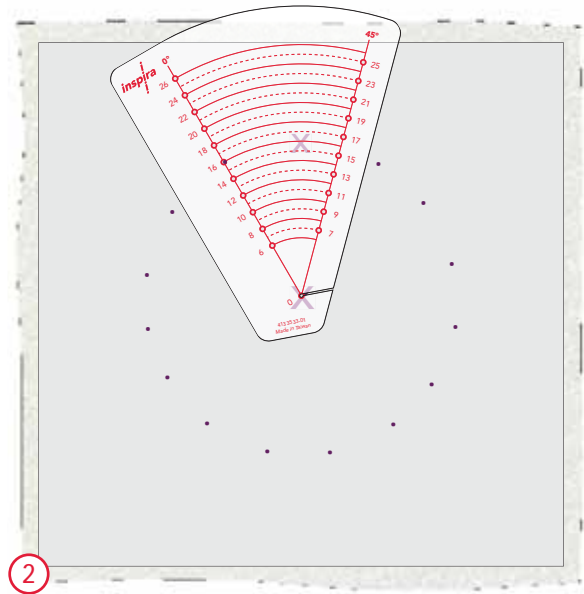




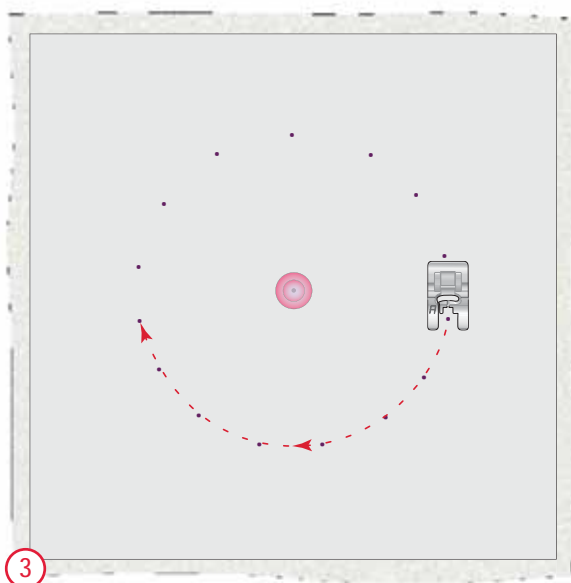
SEW A CIRCLE, TEMPLATE NO. 1



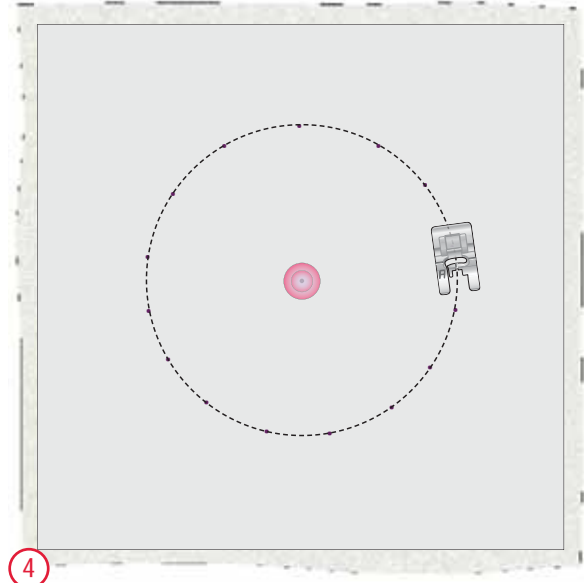
1 Use a marking pen to mark the center point (A) and the diameter (B) you want for your circle.



2 *Tip: To see how the circle turns out on the fabric, move the template a little to the right and mark again. Continue until the circle is complete. Make sure the center point always is visible through the hole in the template.*



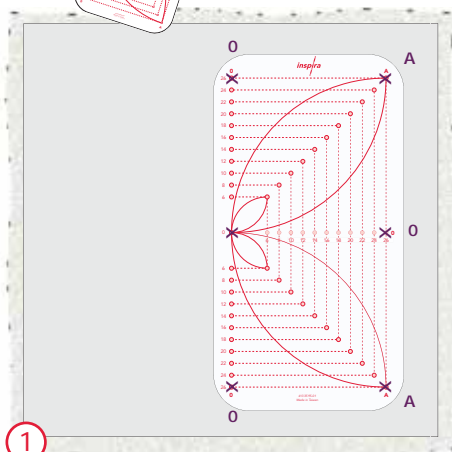
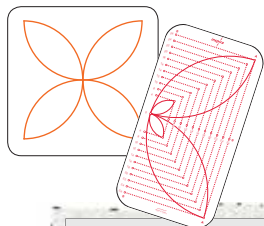
3 Push the Pivot Pin through the fabric at the marked centerpoint. Place the pivot pin in the hole on the SizeGuide (E) (see above). Lower the presser foot and start sewing.



4 Your machine and the circular attachment will feed the fabric in a circular motion. Carefully support the fabric to assure it lies as flat as possible. In order to achieve perfectly round circles, take care to feed the fabric gently and smoothly while you prevent any drag or snagging that would cause distortion.

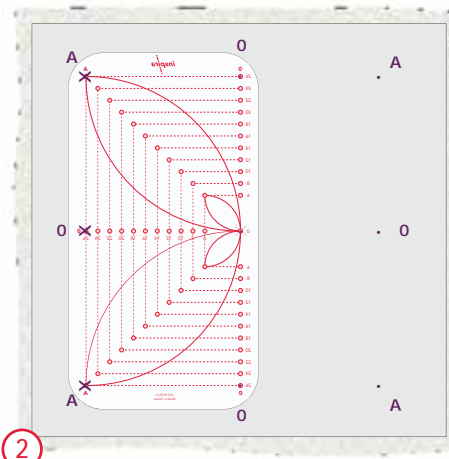
SEW A FOUR PETAL FLOWER WITH TEMPLATE NO. 2

Use template number 2, the Four-Petal Flower template, to create flowers with four pointed petals. First, decide what size to sew (in this case 26Ø). The width of the finished flower corresponds to the diameter of the circle. Next, set your Circular Attachment to the size of your choice.



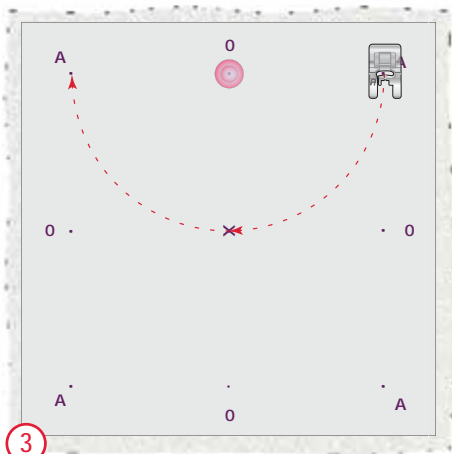
1

Place the template on the fabric as illustrated, then use the marking pen to mark the centerpoint of your flower. Mark all holes corresponding to the size you have chosen (in this case 26). The number "0" and the letter "A" are printed on the template. Transfer the letters/numbers to your fabric.



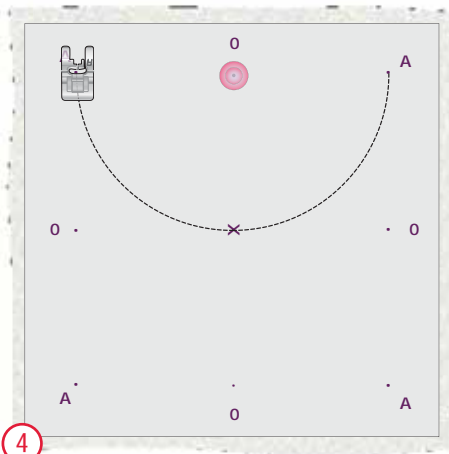
2

Flip the template horizontally. Make sure the vertical "0"-markings line up with the holes in the template. Put markings in the rest of the holes (marked 26), and do not forget to transfer the letters as well.



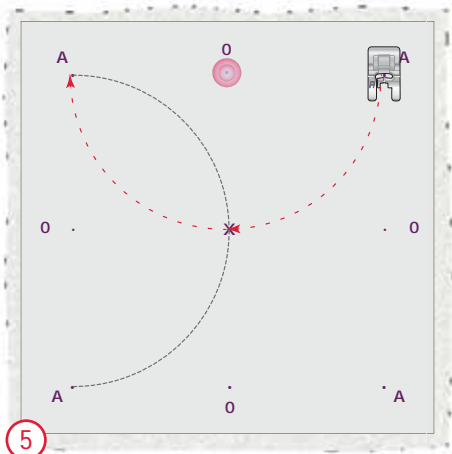
3

Push the Pivot Pin through the fabric in one of the points marked "0". Place the pivot pin in the hole on the SizeGuide.



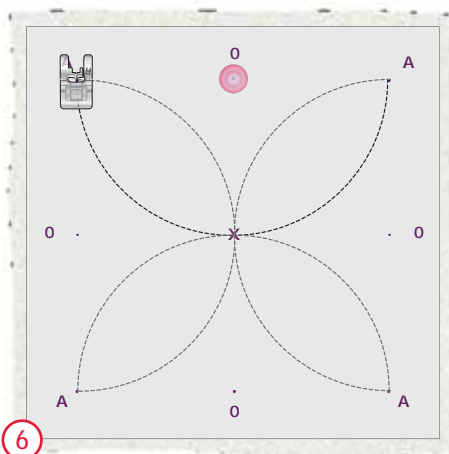
4

Sew from "A" through the center until you reach the next "A".



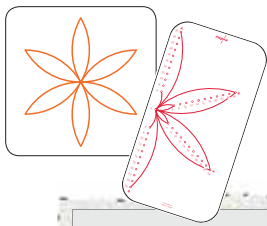
5

Move the Pivot Pin to the next "0" point. Again sew from "A" through the center until you reach the next "A".



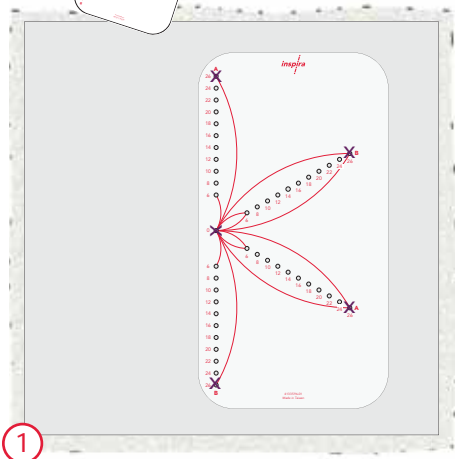
6

Move the Pivot Pin to the next "0" point and repeat sewing from "A" to "A" until the flower is complete.



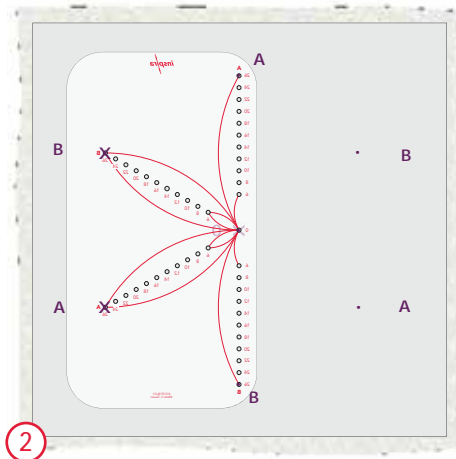
SEW A SIX-PETAL FLOWER WITH TEMPLATE NO. 3

Use template number 3, the Six-Petal Flower template, to create flowers with six pointed petals. Decide what size to sew (in this case 26Ø). The width of the finished flower corresponds to the diameter of the circle. Set your Circular Attachment to the size of your choice.



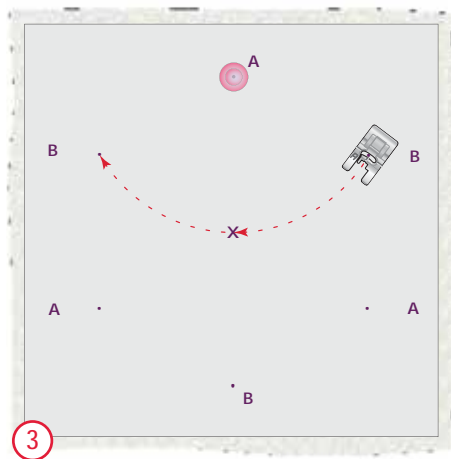
1

Place the template on the fabric as illustrated, then use the marking pen to mark the centerpoint of your flower. Mark all holes corresponding to the size you have chosen (in this case 26). The letters "A" and "B" are printed on the template. Transfer the letters to your fabric.



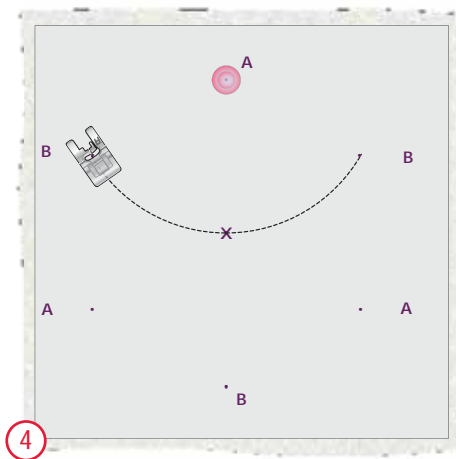
2

Flip the template horizontally. Make sure the vertical "0" and "letter" markings line up with the holes in the template. Put markings in the rest of the holes (marked 26) and remember to transfer the letters as well.

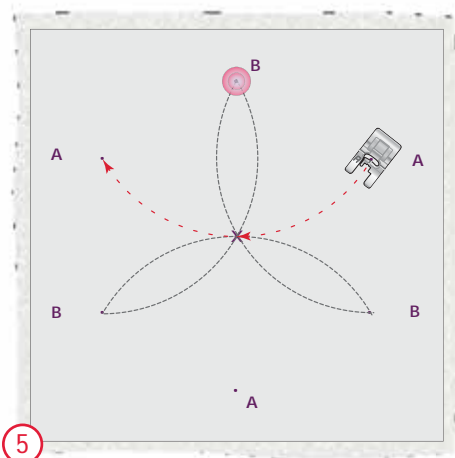


3

Set the Pivot Pin in one of the points marked "A". Sew from "B" through the center until you reach the next "B". Move the Pivot Pin to the next "A" point. Again sew from "B" through the center until you reach the next "B". Repeat for the last point marked "A".

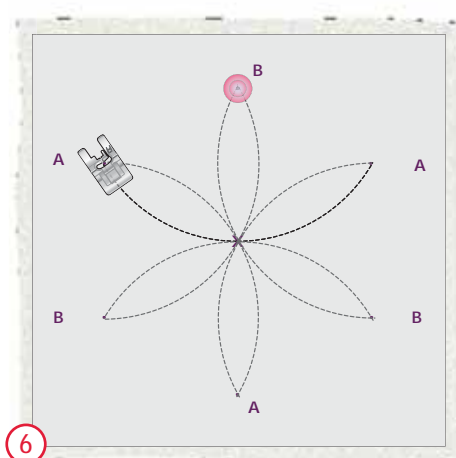


4



5

Move the Pivot Pin to one of the "B" points. Sew from "A" through the center until you reach the next "A".



6

Move the Pivot Pin to the next "B" point. Again sew from "A" through the center until you reach the next "A". Repeat for the last point marked "B".

TIPS AND HINTS

Extension/Quilter's Table

When using the Circular Attachment, we recommend using an extension/quilter's table. This will give extra support to the fabric and makes it easier to control and guide the fabric. Extension/Quilter's tables are available as extra accessories.

Fabric Thickness

If you are using fabric or batting that is too thick, the pin might not hold the fabric in place. Always test by sewing on a scrap piece of fabric.

Large Projects

When sewing on larger pieces, make sure the fabric is not allowed to hang down off of the table where it could get caught and create drag and distortion in your design.



Stabilizer

Always use proper stabilizer underneath your fabric to prevent stretching or puckering.



Stitch Selection

Utility and decorative stitches give wonderful results with this attachment, however, stitches with a default stitch width wider than 7mm, and stitches with backward feeding cannot be used.

Tip: The shorter the stitch, the easier it is to get a nicely joined circle. When about to close the circle, slow down the sewing speed and if necessary, adjust the stitch length to fill the gap.



Appliqués

You can make appliques with the circular attachment. Use fabric that does not fray or make raw edge appliques. You can also simply stitch your applique in place with a straight stitch, cut away the excess fabric, and finish by sewing a satin stitch over the raw edges.

When using several layers of fabric, it is even more important to guide the fabric carefully making sure that all the layers feed together equally.