



Top with ribbons



Sewing Supplies

- Husqvarna Viking Emma sewing machine
- Purchased Top
- 2 1/2 yd. (2.40 m) of 1/4" (6 mm) wide fake suede ribbons
- Sewing thread matching color to the ribbon
- Pictogram pen

SEW

Place the top on a flat surface. Draw two 8.5" (22 cm) long horizontal lines, 2" (5 cm) and 3.5" (9 cm) from the lower edge of the top. Mark with 1 3/8" (3.5 cm) space along the lines as illustrated. Draw two 5.5" (14 cm) long vertical lines with 2" (5 cm) space, starting 2" (5 cm) from the shoulder seam and down. Mark with 1 3/8" (3.5 cm) space along the lines in the same way as on the horizontal lines.

Thread with sewing thread on top and in the bobbin. Select straight stitch. Stitch length 2.5. Snap on presser foot A. Divide the ribbon in half. Place a ribbon flat across the marked lines. Stitch and backstitch over the ribbon as illustrated.

Illustration A

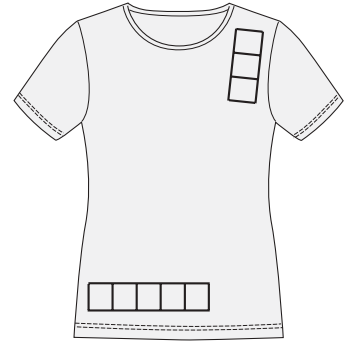


Illustration A

Cross the ribbon over to the next mark and stitch again. Continue in the same way to the end of the marked lines.

Illustration B

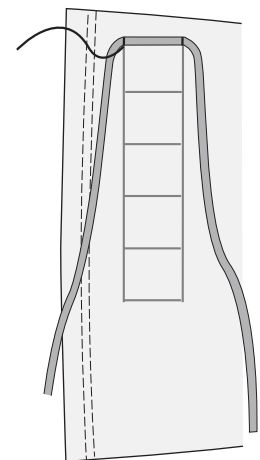


Illustration B

Stitch the second ribbon in the same way from the shoulder and down.

Illustration C

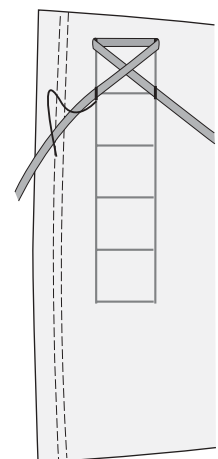


Illustration C



 **Husqvarna**

VIKING