

# Christmas Stocking



**An easy project and a nice surprise for Santa Claus when he arrives through the chimney! The embroideries are optional. Decorate your christmas stocking with stitches or trims if you do not have an embroidery machine.**

### Sewing Supplies

- Husqvarna Viking Sewing/ Embroidery machine
- 24" (60 cm) Velvet fabric
- 20" (50 cm) Thai Silk for piping and gathers
- 24" (60 cm) lining
- 51" (130 cm) Cord for piping
- Sulky 30 wt. Rayon Embroidery thread
- Sewing thread
- Husqvarna Viking Tear-A-Way<sup>®</sup> stabilizer
- Husqvarna Viking Dissolve-A-Way<sup>®</sup>
- Husqvarna Viking card/disk 38, Christmas by Natalie Sorenson
- Gathering Foot (412 34 73-45)
- Piping Foot (411 85 10-45)
- Optional accessories:
- Fasturn (412 55-08-01)

Print out this Pdf-file with the stocking pattern and cut out. Join the pieces at the marks with tape.

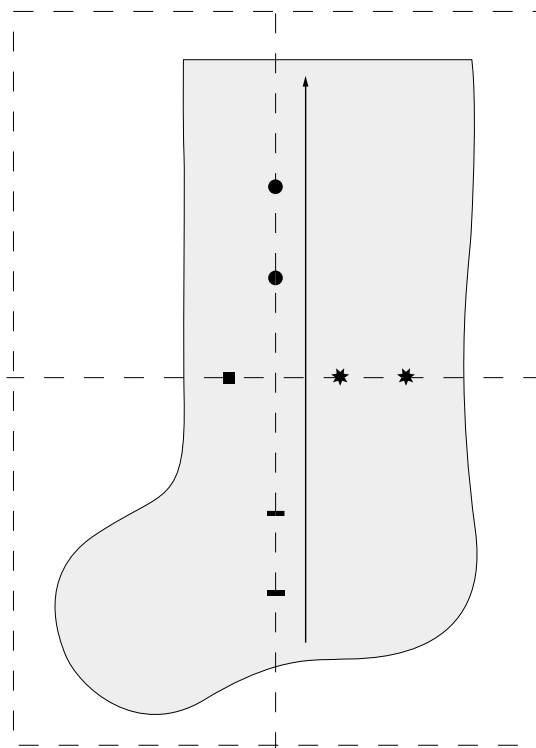
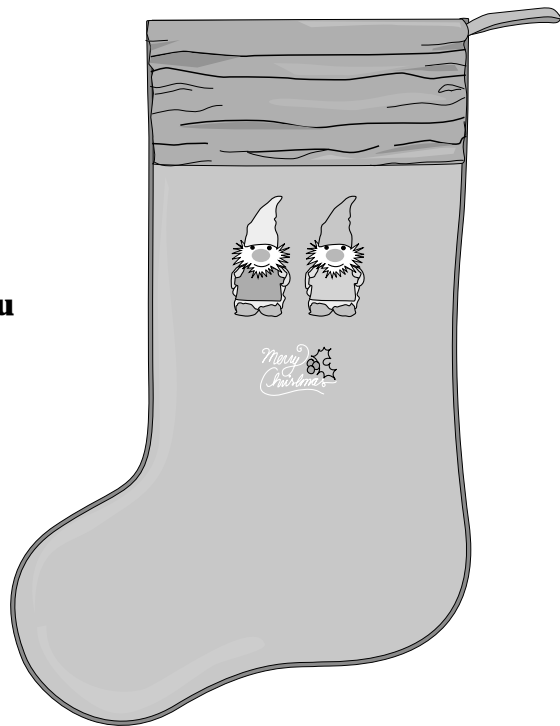
3/8" (1 cm) seam allowance included in all measurements.

### Cut

- 1 front piece in velvet and one in lining
- 1 back piece in velvet and one in lining
- 1 piece in thai silk measuring 10" x 8.5" (25 x 22 cm)
- 1 piece in thai silk for hanger, 1" x 4" (2.5 x 10 cm)
- Cut 2 bias or crosswise grain strips in thai silk 1 \*" (3 cm) wide.
- Sew the strips together to a 51" (130 cm) long strip for the piping.

### Embroider

Select design 22 on Menu 1 and combine two designs beside each other, and design 5 on Menu 2 underneath. Combine your design in your built in customizing on Designer 1, or embroider them one after the other with another Husqvarna Viking embroidery machine. Hoop the velvet front piece with tear away stabilizer under the fabric and water soluble stabilizer on top. Embroider the design.



## Sew

Fold the strip for the hanger lengthwise and stitch the long side. Turn with Fasturn. Press.

Take the 10" x 8.5" (22 x 25 cm) thai silk piece. Finish one of the 8.5" (22 cm) edges with a narrow double hem.

Gather the 10" (25 cm) edges. Snap on the Gathering Foot. Select straight stitch 3.0. Place the edge under the presser foot and sew.

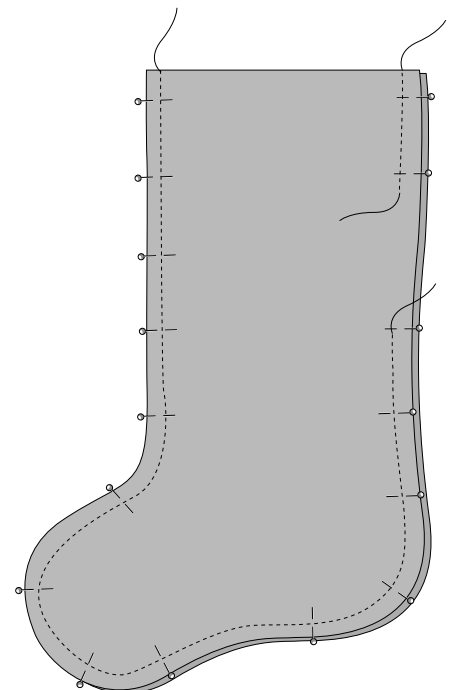
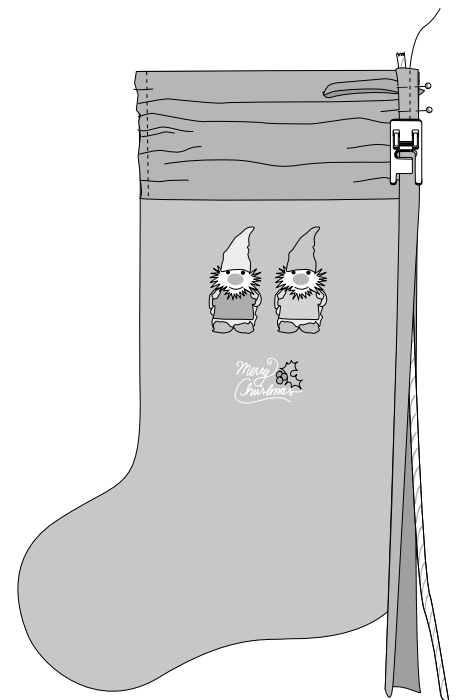
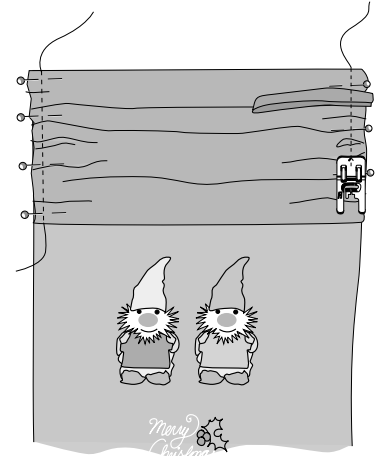
Fold the lowered edge with the narrow hem with 1" (2.5 cm) to the inside before you pin the gathered piece to the upper edge of the velvet frontpiece. Pin the double hanger 3/8" (1 cm) down from the upper edge.

Snap on presser foot A. Sew the gathers and the hanger to the front piece with \*" (6 mm) seam allowance.

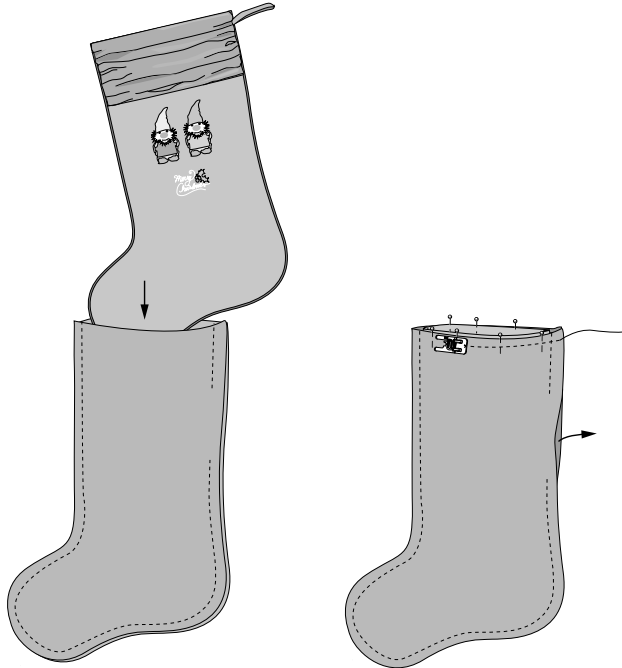
To sew piping on the edge, snap on the Piping Foot. Lay the cording on the wrong side of the silk fabric strip and wrap the fabric over the cord. Place the fabric and cord and the front piece under the Piping Foot with the cord in the groove on the underside of the foot. Sew the piping around the front piece leaving the upper edge.

Pin the front and back pieces right sides together. Use the Piping Foot and adjust the needle one step to the left and sew together. Leave the upper edge open.

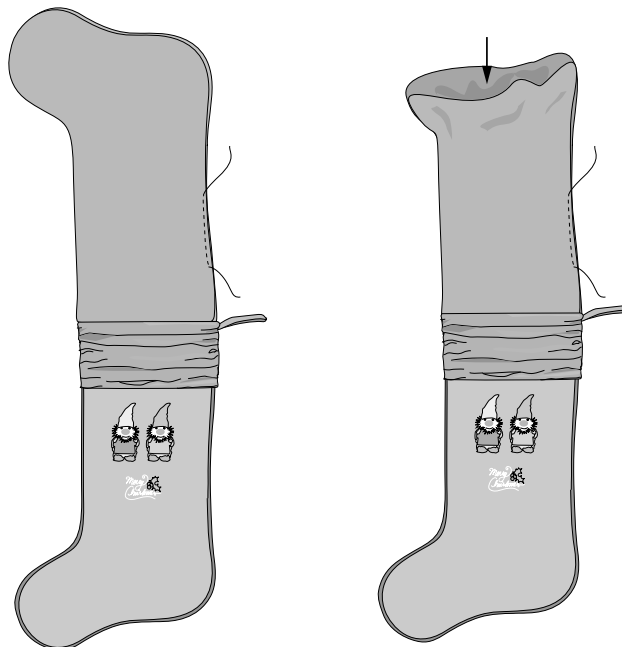
Snap on the A-foot. Pin the lining right sides together. Sew, leaving the upper edge and 4" (10 cm) on the side open.



Place the velvet stocking inside the lining right sides together. Pin and sew all around the upper edge. Turn the stocking to the right side through the lining opening.



Slipstitch or topstitch the opening in the lining closed and put the lining inside the velvet christmas stocking. Press the upper edge carefully.



Now you are ready for a visit by Santa!!



