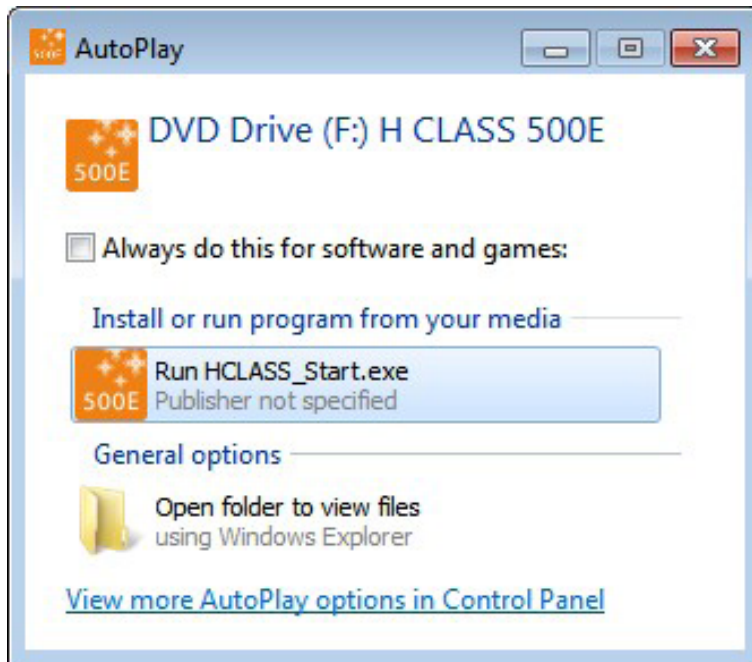


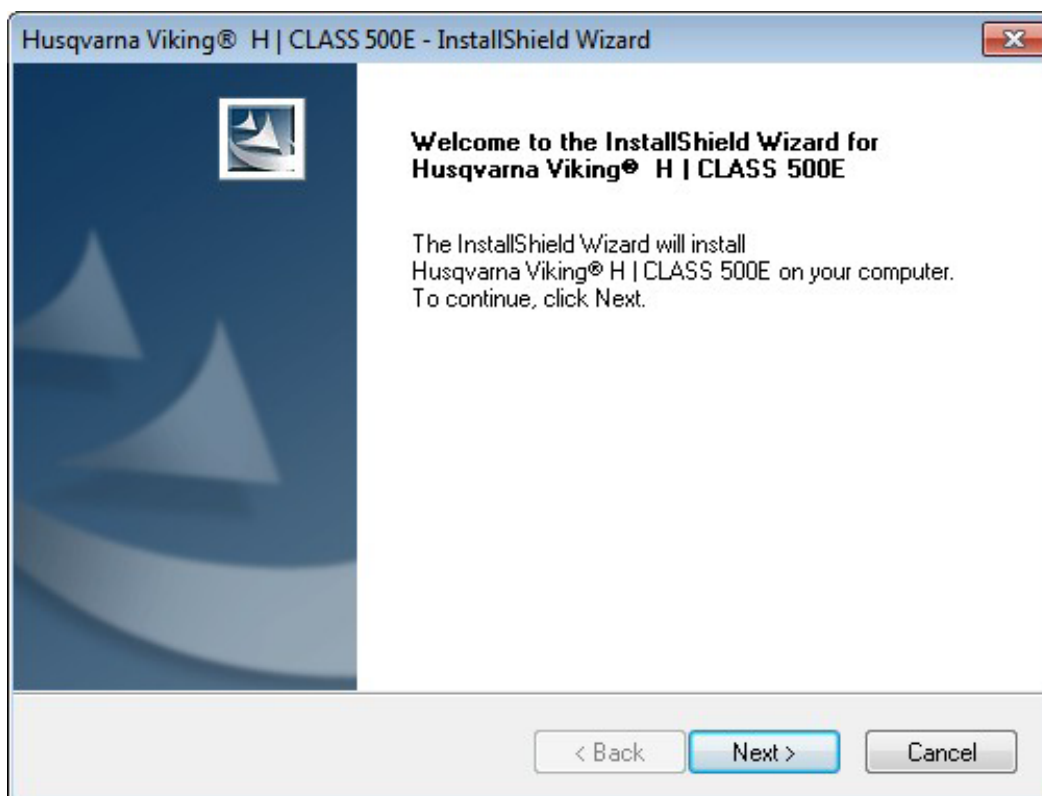
H | CLASS™ 500E *main installation*

First of all make sure that the machine is disconnected.
You can always abort the installation by clicking the “Cancel” button

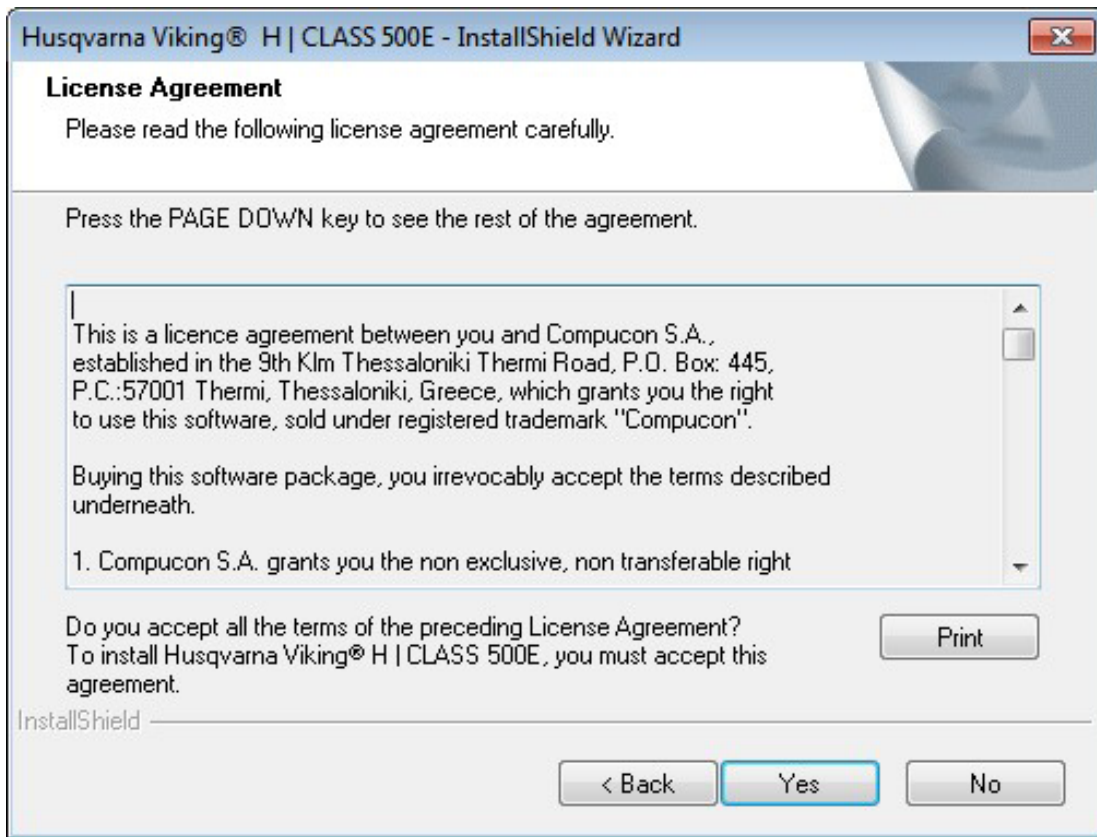
Insert the installation disk and click “Run H|CLASS™_Start.exe” from the dialogue box



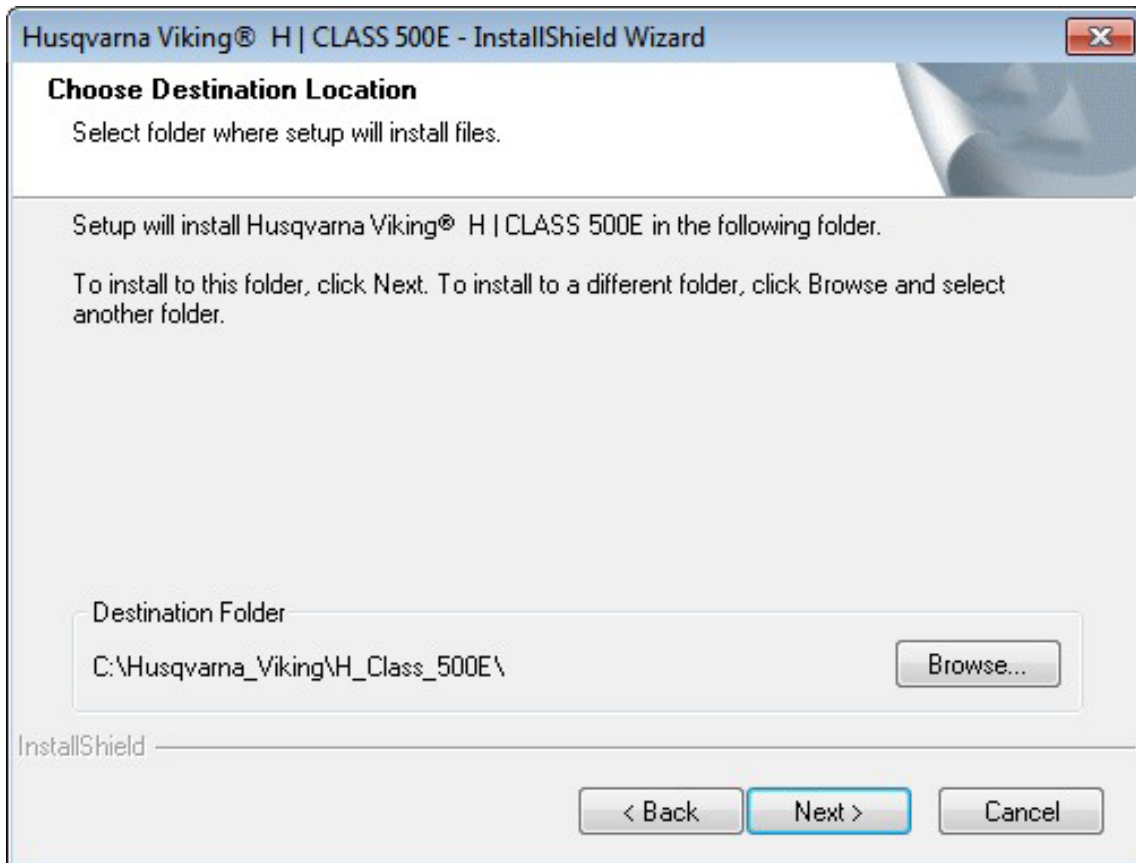
Click on “Next” to move on the next screen.



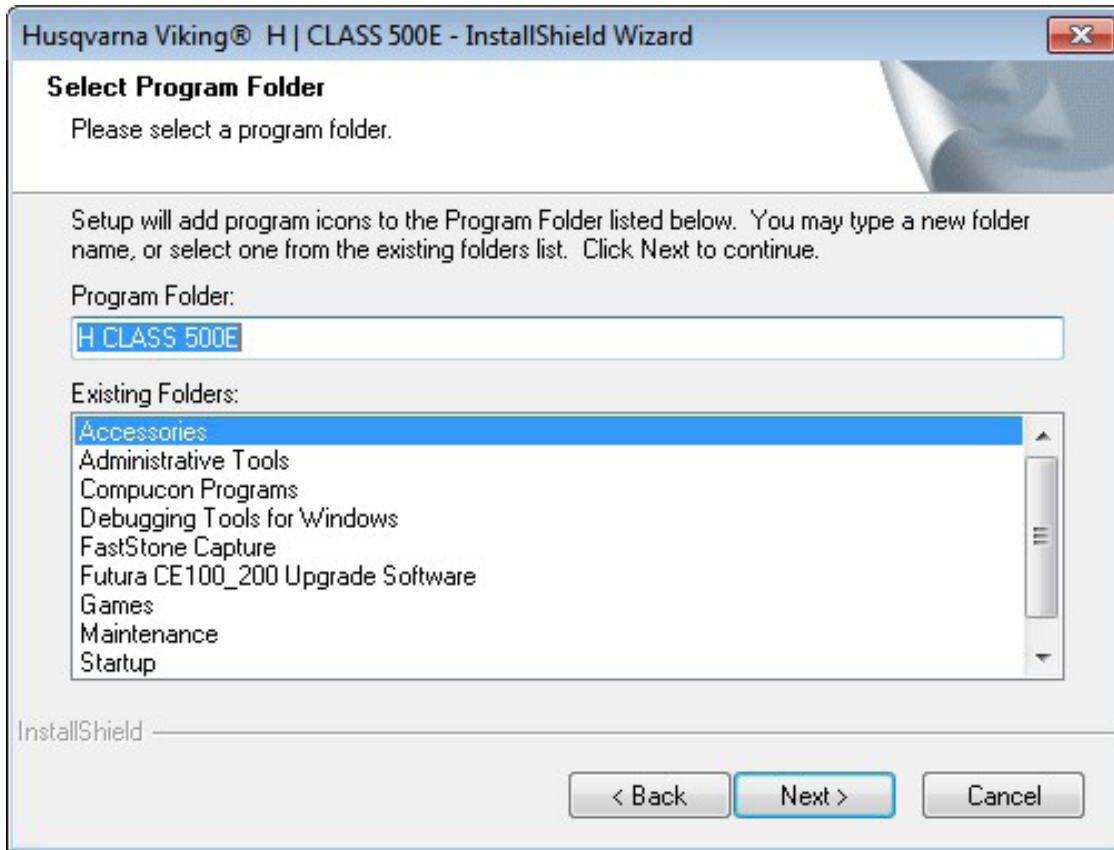
After reading and agreeing with terms given in the License Agreement, please click on “Yes”.



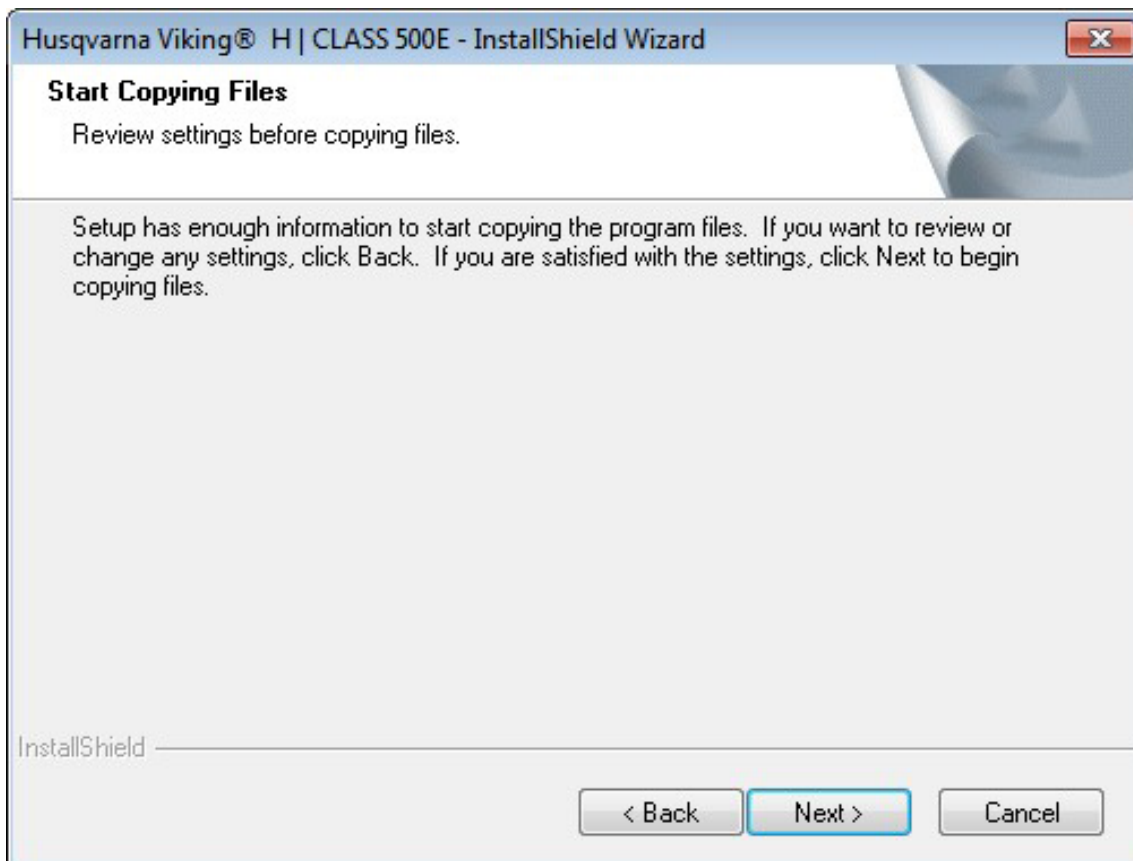
Click on “Next” and then select the directory where the software should be installed. It is recommended to use the default directory.



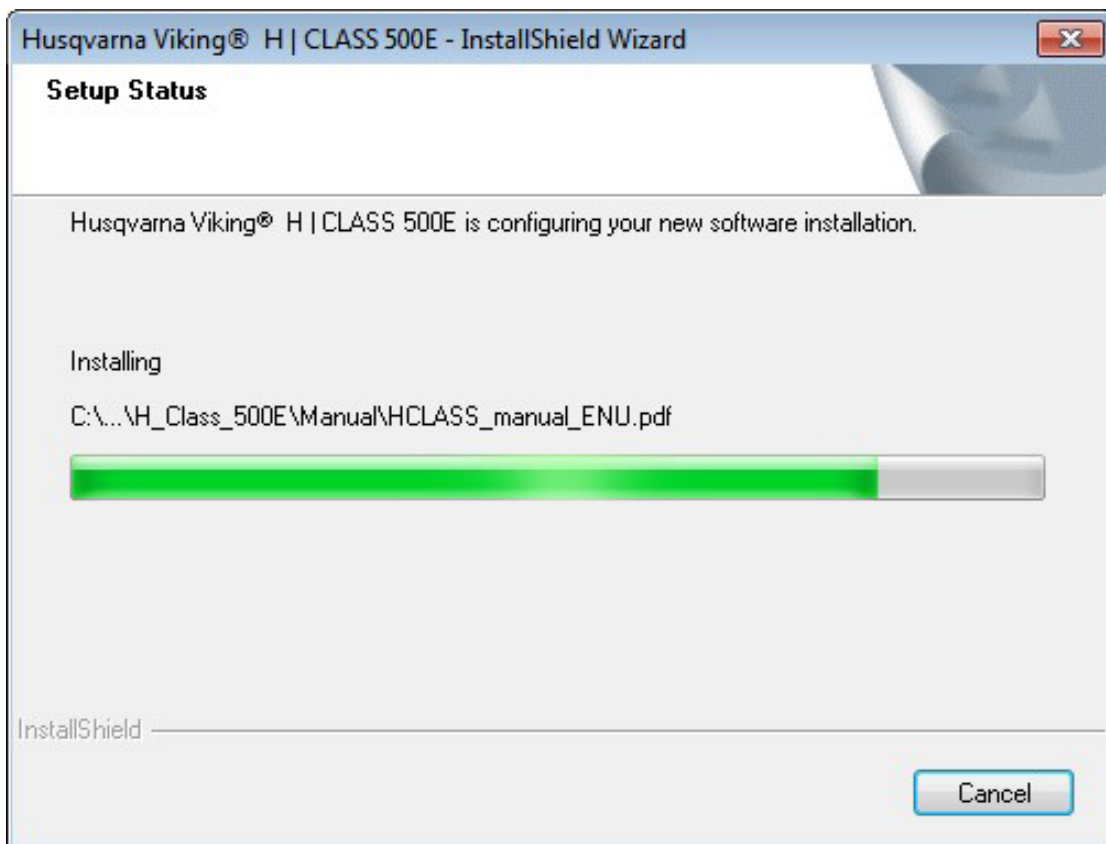
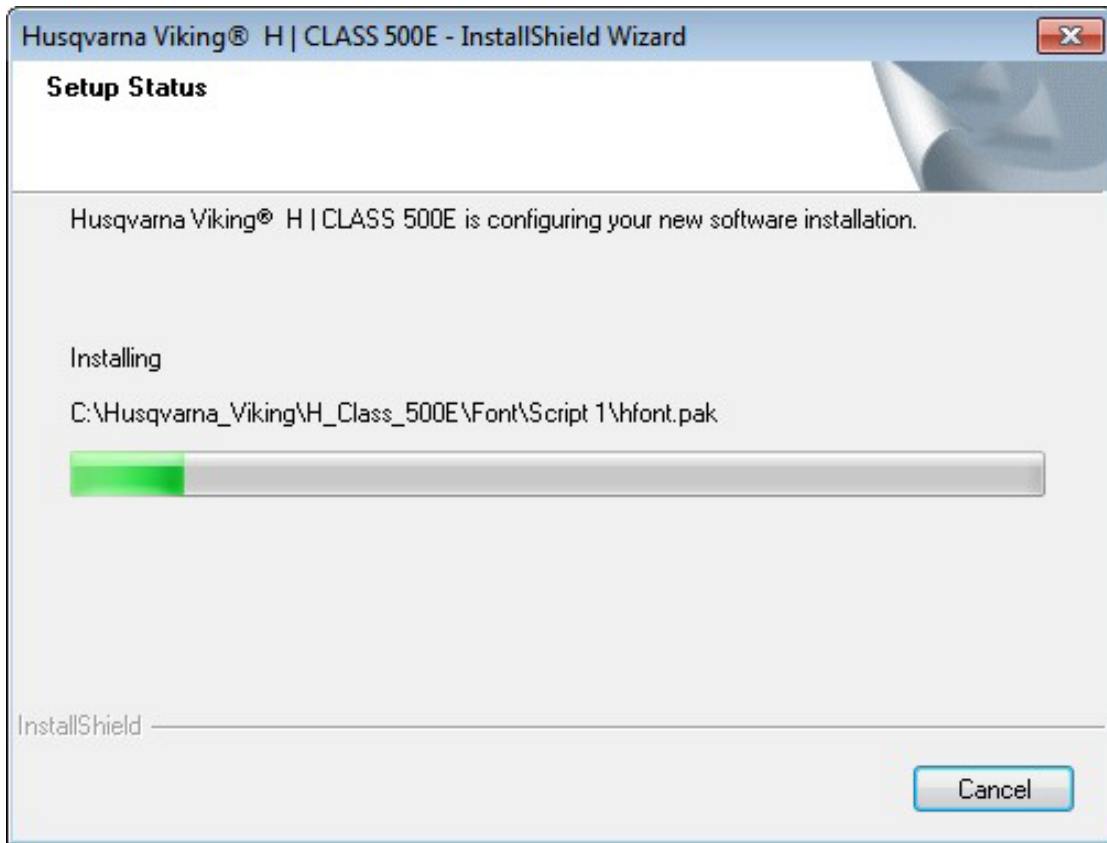
Click Next on the following screen. It is recommended to leave the default Program folder name with the default name.



Finally you are requested to confirm all the selections made during the installation setup. Pressing the “Next” button will finally start the copy and installation of the H|CLASS™ software files to the given directory on the hard disk.

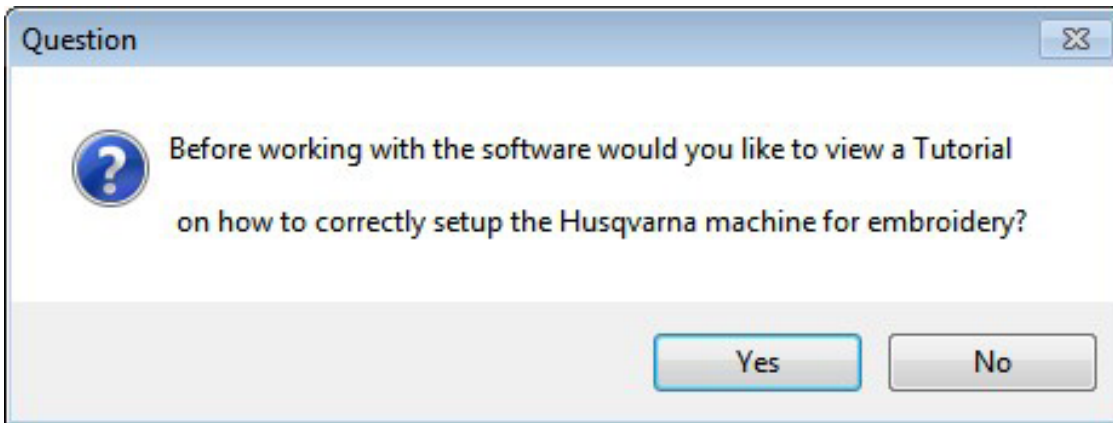


A progress bar will indicate the stage at which the installation procedure is. It will finish when it has reached 100%.

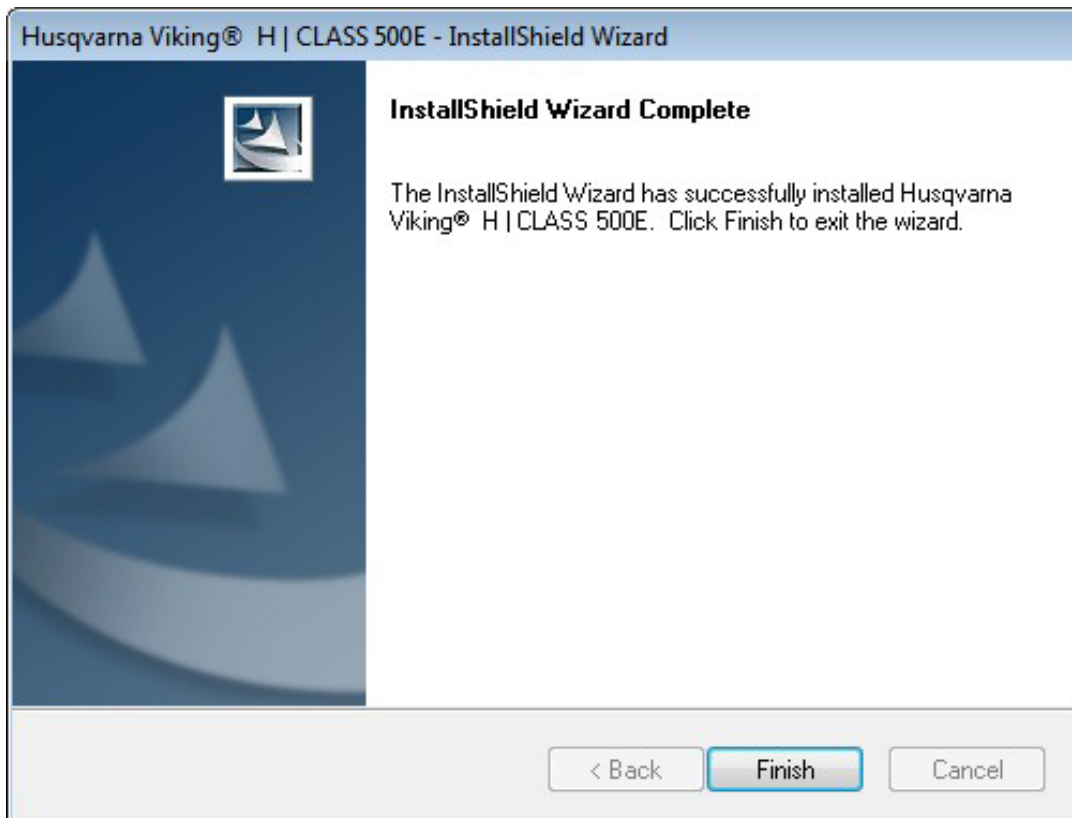


After the finish of the installation procedure, the software will prompt if you would like to view the “Machine set- up” tutorial, with step-by-step instructions on how to correctly setup your machine for embroidery.

Select “Yes” if you would like to view the tutorial or “No” to skip.

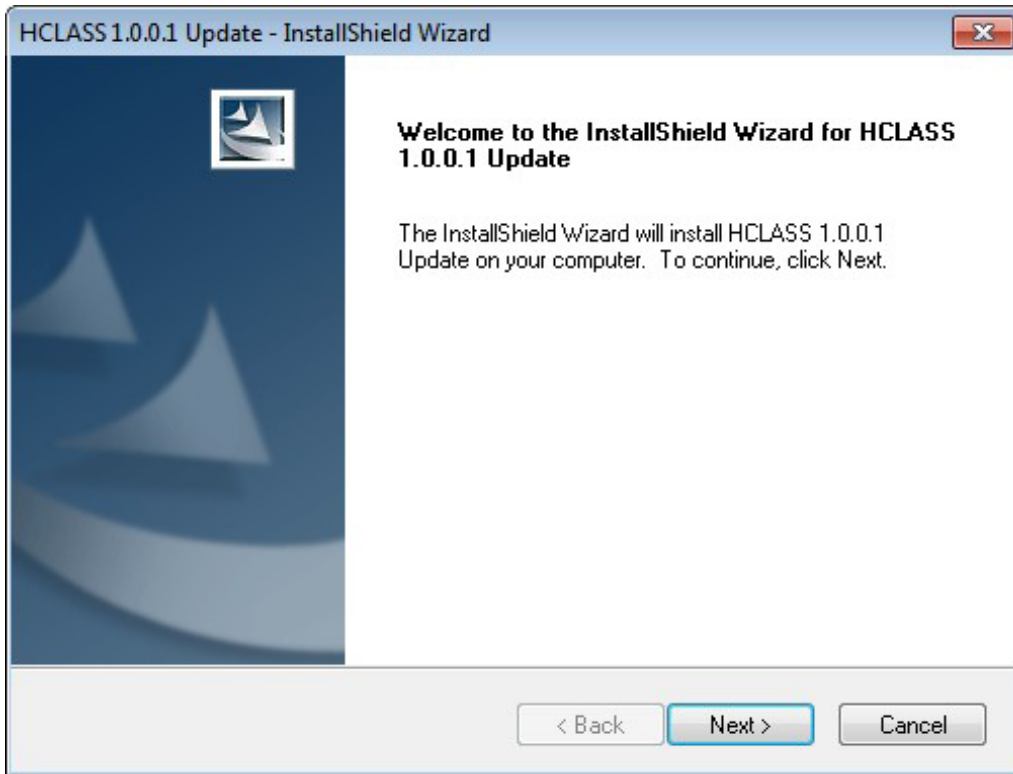


Click on “Finish” to finish the software installation.

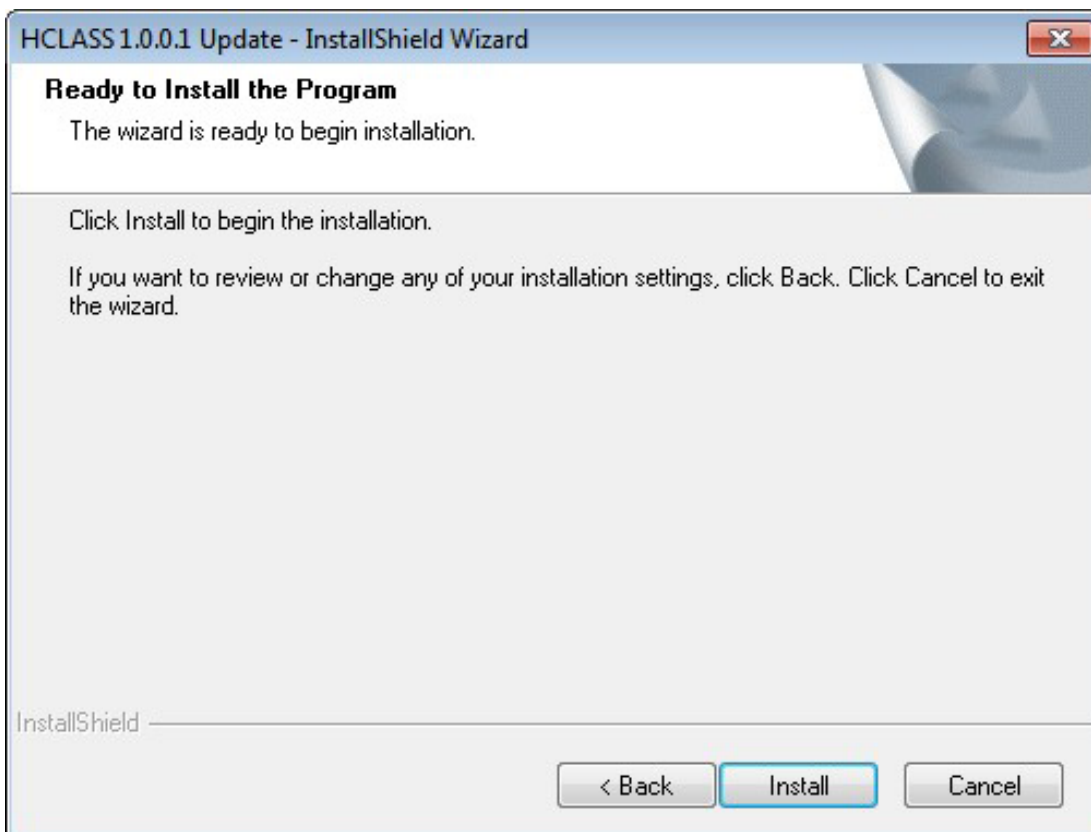


H|CLASS™ 64bit update installation

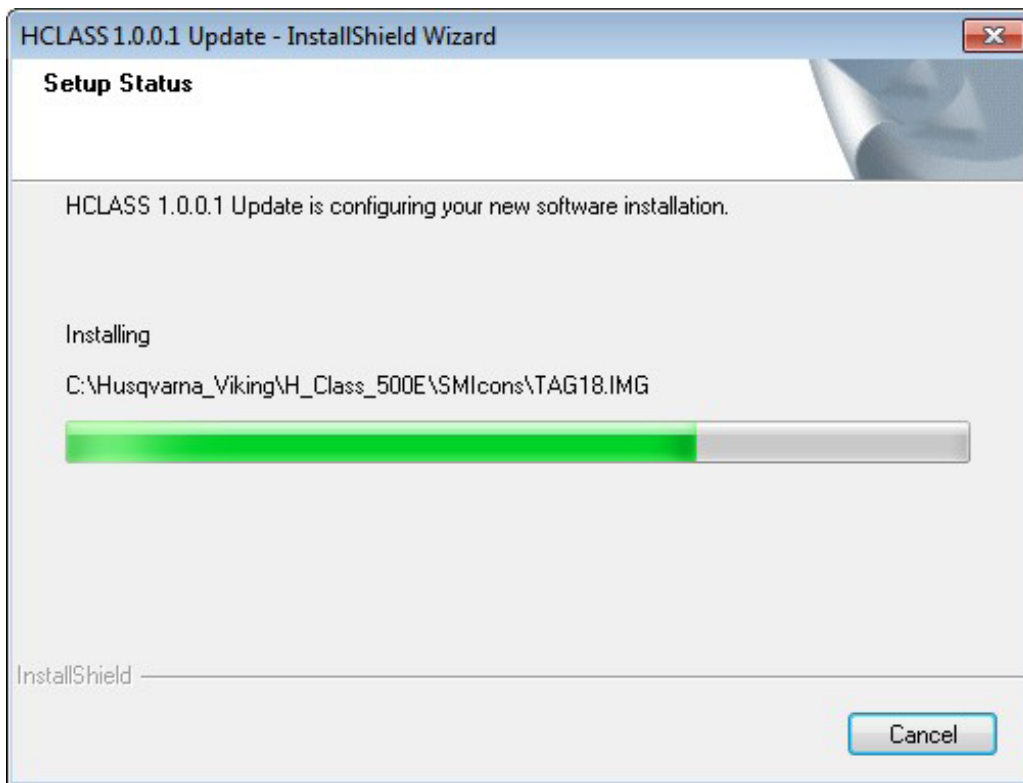
Now we have to apply the 64bit update in order to install the 64bit compatible driver. Browse your computer for the H|CLASS™ 1.0.0.1 Update and double click on it. Click “Next”



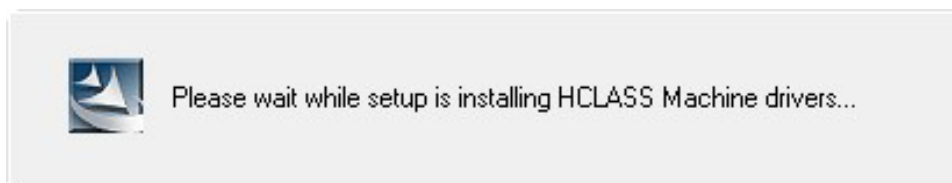
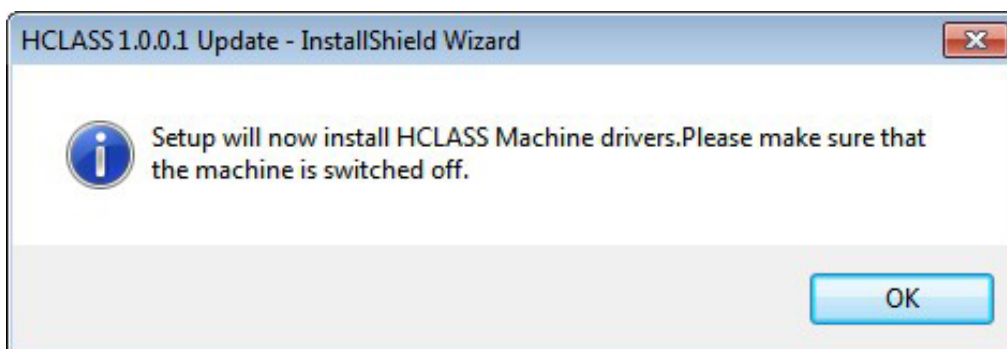
Press “Install” to continue



The Installation process will go through a couple of screens.



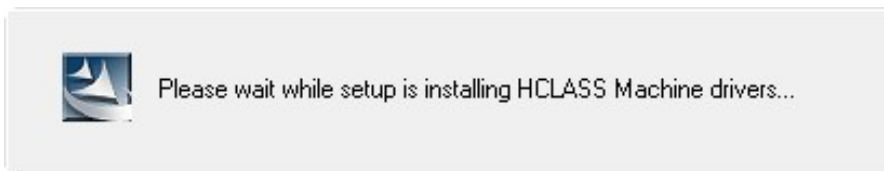
Make sure that the machine is not connected and press OK.



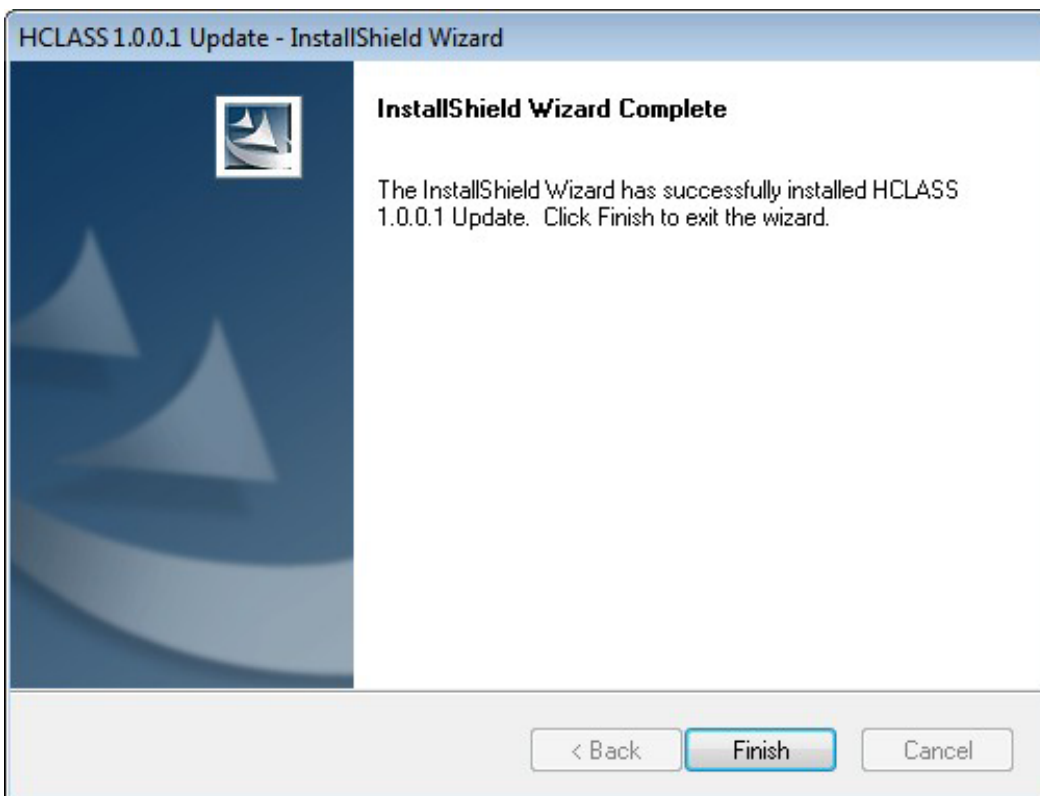
During the installation of the 64bit drivers you will have a Windows Security warning. Please click “Install”.



The driver installation will continue.



Press “Finish” to finish the driver installation.



Now connect your machine to a USB port on your computer and turn it ON.

H|CLASS™ 500E is now ready to be used.