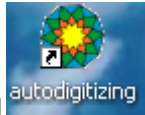
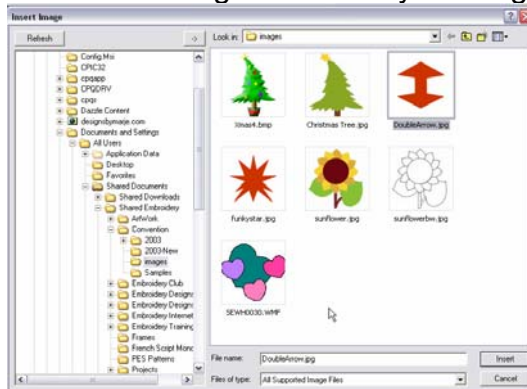


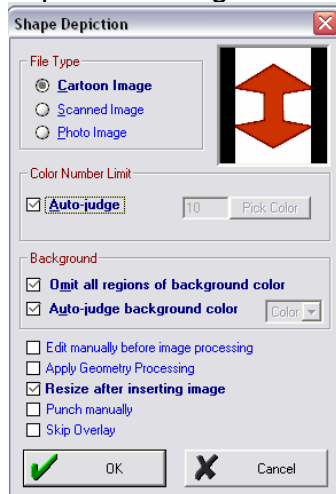
autodigitizing



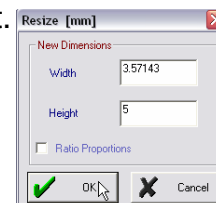
1. Open autodigitizing
2. Click on the Insert Image icon.
3. Select the image to insert by clicking on the name, Select doublearrow.jpg




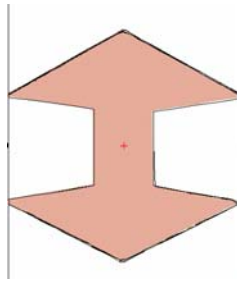
4. Check the Punch Manual and the Resize after inserting image box in the Shape Depiction dialog box.




5. Enter a number in either the width or height on the Resize dialog box. I usually use between 5 and 10 for either the width or height. The smaller the motif, the lower the stitch count.




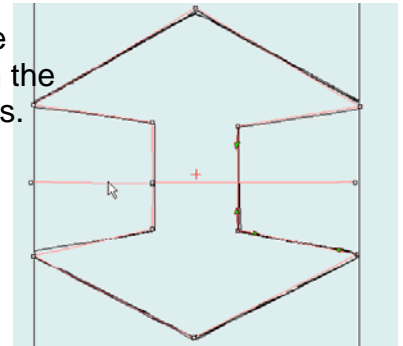
6. The image displayed in the background is very small. Use the Zoom all icon  to increase its size so that you can

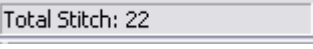



manually punch the motif.

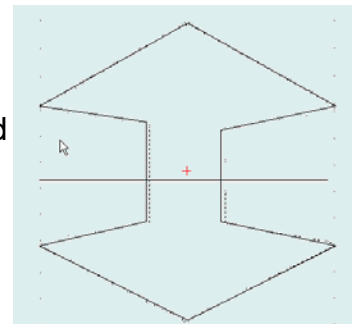
7. Using the insert a line icon  follow the contour of the double arrow. Start on the left of the design and end on the right. This will eliminate stray lines connecting the motifs. Right click for curved line segments and left click for straight line segments.

Note: Click on Background icon  to turn background image on or off.

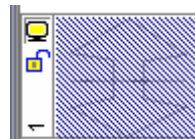


8. Press Enter when finished, then Press ESC. Notice the number of stitches at the bottom of the motif.  I like to keep the stitch count under 100.

9. Generate 
Note: Some motif shapes change after being generated because of the size of the design.

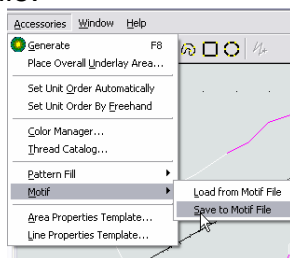


10. Click on the film icon 



11. Click on the motif on the film strip.




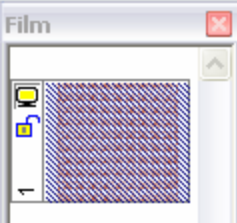

12. To save the motif, click on Accessories (menu bar), then Motif, then Save to motif file.

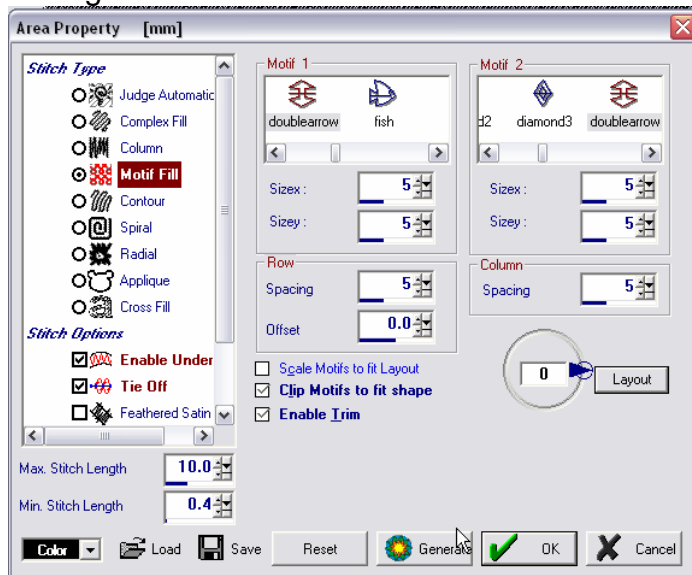


13. Enter the name of the motif and click on OK.

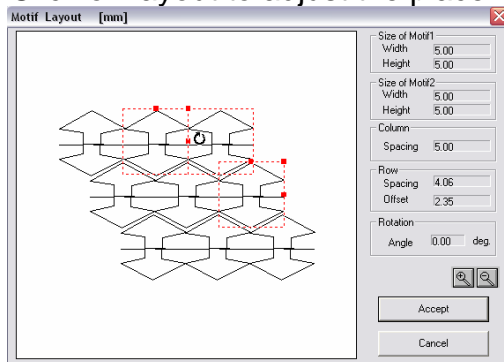


Test your motif

1. Click on the New Design icon .
2. Click on the Insert Rectangle icon. .
3. Click to define any one corner of the rectangle, drag the mouse to form a square. Click to finish. Press ESC.
4. Open the film strip by clicking on the film icon , and click on the square. 
5. To access the properties, press the space bar or click on the properties icon .
6. Click on the Motif in the Properties dialog box. Adjust the size if desired. I set the size to 5. The smaller the sizex and sizey, the more stitches are generated.



7. Click on layout to adjust the placement of the motif.

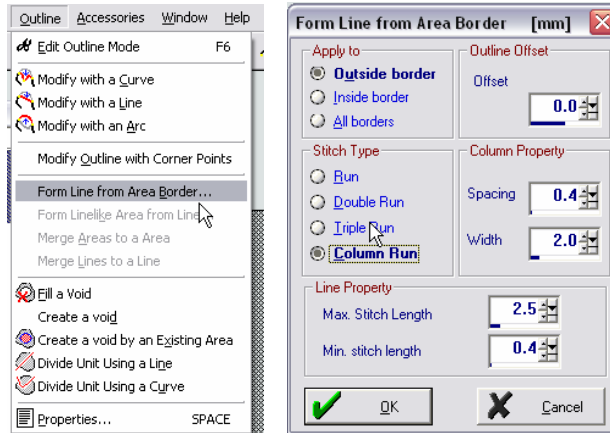


8. Click on Generate. 


9. An outline finishes the edge of a motif design. I like to use a column stitch (satin stitch) outline. On the film strip click on the motif design, then click on the toggle

to the outline view 

10. Click on outline, Form line from area border.



11. Click on apply to outside border. Set the stitch type to Column Run. Click on OK.

12. Generate 

Note: Always test sew your motif designs.
Have fun.

