

Let It Snow!

By Marie Duncan
Education Creative Coordinator

Make this “frosty” pillow to put a smile on the faces of all who see it, on a cold winter day!



Sewing Supplies:

- Husqvarna Viking Sewing/Embroidery Machine
- 1/3 yard Tone-on-Tone Blue Background Fabric
- 9” x 12” Light Blue for Snowflake Border
- 40 wt. Rayon Embroidery Thread
- 2 1/4 yard Home Dec Piping
- Bobbin Thread
- 9” or 10” x 17” Pillow Form (Or fabric and fiberfill to make your own)
- Inspira Tear-A-Way Light Stabilizer #141000820
- Clear 1/4” Piecing Foot w/guide #412927445
- Single Welt Cord Foot #412 62 70-45
- Sewing Thread
- 12” – 14” Invisible Zipper

Embroider:

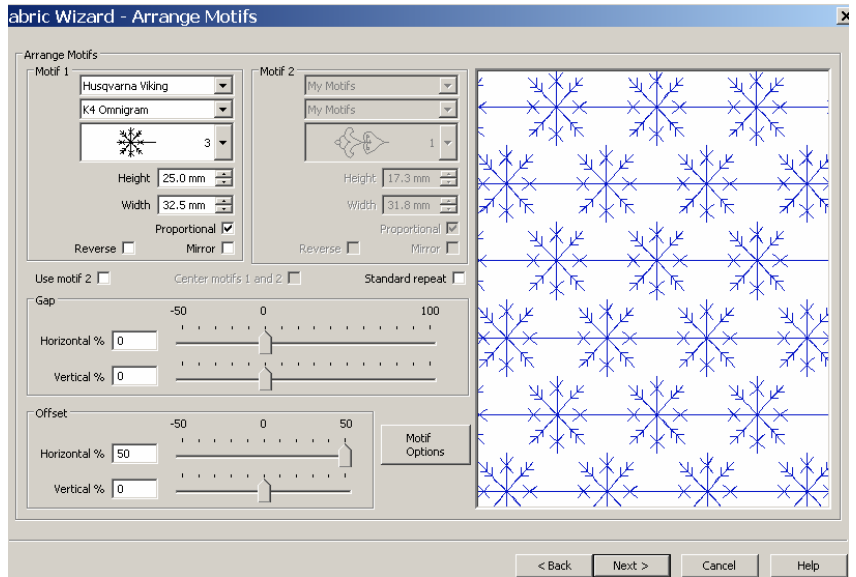
1. Download the January 2009 Monthly design from www.husqvarnaviking.com. It is located under Free Monthly Designs.
2. Thread with 40 wt. rayon embroidery thread on top and bobbin thread in the bobbin.
3. On one end of the tone on tone background fabric, hoop with two layers of Inspira Tear-A-Way Light Stabilizer in your 240- x 150 hoop.
4. Stitch the design. Be sure that the embroidery is at least 3” in from the end of the fabric.

- Cut the embroidered fabric to 10 1/2" x 14" with the embroidery centered.

Border:

For the border, you have two choices depending on what machine and software you have. If you have Husqvarna Viking 4D Fabric Decorator, follow these instructions:

- Open 4D Fabric Decorator.
- Select Create Fabric, Click NEXT.
- Select Husqvarna Viking, K4 Omnigram Stitches, #3, Offset Horizontal 50. Click NEXT.
- Change Hoop to 240 x 150 Vertical. Leave everything else at the default settings. Click NEXT.
- Save fabric as embroidery or send to your embroidery machine. Click Finish.
- Hoop the 9" x 12" snowflake panel fabric with two layers of Inspira Tear-A-Way Light Stabilizer #141000820 and embroider the design.
- Cut down to 5" x 10 1/2" with embroidery centered.



If you don't have Husqvarna Viking 4D Fabric Decorator, follow these instructions:

- Mark a 5" x 10 1/2" area in the center of the 9" x 12" fabric.
- Place one layer of Inspira Tear-A-Way Light Stabilizer underneath the fabric.
- Thread with 40 wt. rayon embroidery thread on top and bobbin thread in the bobbin.
- Chose a decorative stitch and "fill" the fabric with stitches. (We used K4:57 on the Designer Diamond).
- Cut down to 5 x 10 1/2" centering the stitching.

Finish the Pillow:

- Thread with sewing thread top and bobbin.
- Snap on your Single Welt Cord Foot. Stitch piping along one long edge of your snowflake border.

3. Place the snowflake border right sides together on the right hand edge of the embroidered panel.
4. Stitch, moving your needle position several clicks closer to the piping.
5. Move your needle back to center position. Stitch the remaining piping around the entire pillow front.
6. Cut pillow back pieces 10 1/2" x 10 1/2" and 10 1/2" x 8 1/2" from the remaining tone-on-tone blue background fabric.
7. Stitch an invisible Zipper between the short sides of the finished back pieces so the back measures 10 1/2" x 18".
8. Open the zipper 5" or so. Place the pillow front and pillow back right sides together.
9. Snap on your Single Welt Cord Foot. Stitch, moving your needle position several clicks closer to your piping, all the way around the pillow.
10. Turn through the zipper opening. Insert the pillow form and zip closed.