


# autodigitizing

## Getting Started

---

### Big Rose: A Cartoon Image

---

1. Open autodigitizing, or click New Design  to get a blank screen if autodigitizing is already open.

2. Set Display Preferences as follows:

Go To: View/Display Preference

- Linear Measure to mm
- Auto Save to 2 minutes
- Freehand Punching checked

Grid Settings


- Distance 10
- Type Line
- Leave check in Snap to Grid When Moving
- Click OK to accept Grid Settings

Hoop Settings

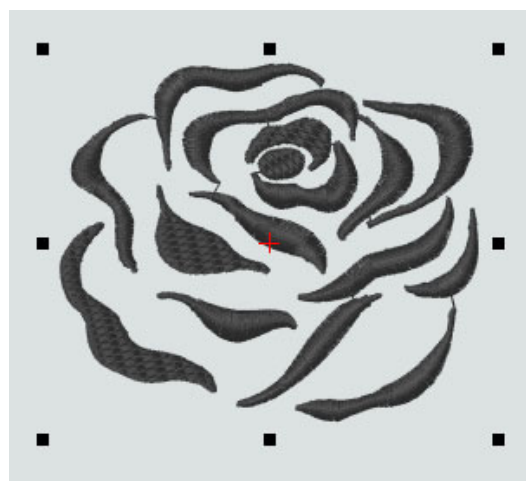
- Click a check by Show Hoop
- Click a check by Auto Center
- Click a check by Show Original Point
- Select Hoops By Brand by clicking in the circle.
- Select the format for your embroidery machine.
- Select the size hoop you will use.
- Select Horizontal or Vertical.
- Click OK to accept Hoop Settings.



Click OK to accept Display Preferences.






3. Click the Insert Image icon.  Use the black arrow at the right side of the Look In box to locate C:/autodigitizing/artwork,  
OR  
Scroll the button on the left half of the screen to find the autodigitizing folder under C:/. If there is a + sign in front of autodigitizing, click the plus sign to open the folder. Double click on the artwork folder to open it.
4. Pictures (graphic images) of the files within the folder will appear in the right half of the Insert Image dialogue box. (Some operating systems will show only the file name. To get a picture view in Windows XP/2000, choose View/Thumbnail in the Insert Image dialogue box.)
5. Left click the file or picture labeled Big Rose. The graphic will become selected, with a highlighted box and title. Click the Insert button in the lower right corner to accept the graphic.
6. The Shape Depiction dialogue box will appear. Be sure a dot is checked beside Cartoon Image.
7. Leave a check in Auto-Judge Color Number Limit, Omit All Regions, and Auto-Judge Background Color, and Resize after inserting image. These are the default settings for this image.
8. Click OK to accept these settings. The Intelligent Design Processor will analyze the image, indicated by the flickering lights in the bottom Status Bar. When the processor is finished, the Resize window will be visible.
9. Leave a check beside Ratio Proportions, so the design will automatically keep height and width in the same proportion to each other as you change the design size.
10. Enter a width of 45 mm. Height will calculate automatically, since Ratio Proportions is checked. If you wish to preview the height setting, press the Tab key on your keyboard.
11. Click OK to accept the settings.

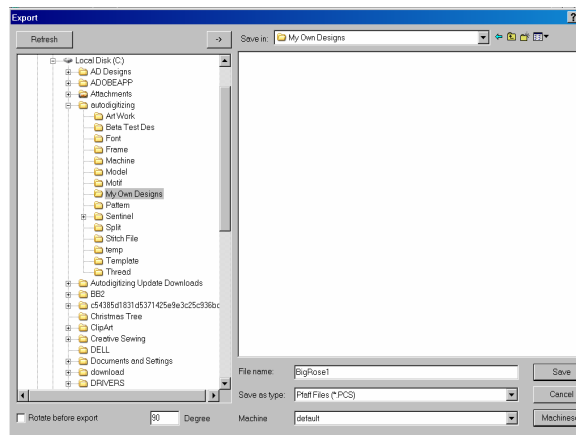
12. The design will finish processing and load onto the display screen. The design will be selected, small squares at the corners and center points of the box outlines. At this point, no stitches have been created, although objects exist in the design



13. Click the Generate icon  to create stitches. The image will appear in the Stitch View  mode in a regular stitch view. The design will be selected, with boxes at the corners and middle of the sides.

14. Click the 3D icon  in the left toolbar to show a three dimensional view of the stitched design. Note: if the 3D button is recessed and lighter in color, you are in Quick 3D view. Quick 3D may be alternately turned on or off with each left click.
15. If you are unable to see the outlines of the hoop, due to being zoomed in too close, use the Zoom Out function and left click to zoom out 20% with each click, until the hoop is visible. Right click once to end the zoom mode.
16. Click the Save Current Design As icon  and type in the file name BigRose1.
17. In the top Save In box, click the drop arrow and click to select the autodigitizing folder.
18. Click the Create New Folder icon  in the top toolbar of the Save Current Design dialogue box. Type in a folder name of My Own Designs and press the Enter key on the keyboard to accept the name.
19. Double click the My Own Designs folder to open it. My Own Designs will appear in the Look In box at the top of the display.
20. The Save As Type box at the bottom of the display screen will be set for ASD. Give the design a name and then click the Save icon to save the design as a working (ASD) file.
21. To create a stitch file, click on File in the Menu Bar at the top of the display. Scroll down to Export and click to select. A dot will appear beside To Directory. Leave this if sending to a home embroidery machine. Click a dot beside To Device if sending to a commercial embroidery machine. Click Next to continue. The Export Dialogue box will open.

22. In the left half of the screen, under autodigitizing, select My Own Designs with a double click.
23. Left click in the File Name box in the lower right half of the screen. Type in BigRose1.
24. Click the black arrow at the right of the Save as Type box. Select the correct format for your embroidery machine. If you are unsure which format your machine uses, consult your machine manual or your dealer for more information.



25. If saving to a home machine format, leave Machine at default. If saving to a commercial machine, use the black arrow to select your brand of machine,

and click the Machineset button to change machine settings. The Machineset settings need only be altered for commercial machines.

26. Click the Save icon to save with the settings you have selected. This is a stitch file, and it can be stitched on your embroidery machine.