

autodigitizing

Getting Started

Personalizing your screen - Display Preferences

Changing the Display Preferences

Click on the View Menu, then scroll to **Display Preference** and click. The Preference dialog box opens.

1. The **Linear Measure** area lets you set the system's measurement for either millimeters (mm) or inches. Once set, all measurement values in the system will be measured in the selected unit.

NOTE: The metric system (mm) is used in embroidery, as it is generally simpler to work with. Stitch values (densities, stitch lengths, underlay values, etc) are whole numbers when working in millimeters. If you change the measurement to inches, numbers will require several decimal places, making calculations and measurements more difficult and confusing.



2. **Background Color** controls the color of the screen in your work area. The default color is a light grey/blue.
 - If the embroidery stitches are difficult to distinguish from the background, you may choose to set the background to a different color.
 - To adjust the color, left click on the “Color” icon. A color palette window will appear and allow you to select one of the basic colors, or define and select custom colors.
 - Click on OK to accept the new color.
 - Color may be changed at any time.

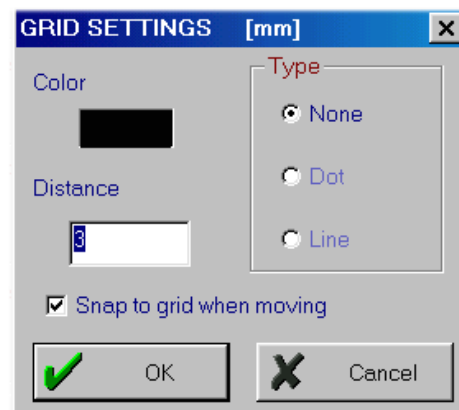
3. **Auto-Save** enables the program to automatically back-up your design in case of a computer shutdown. The number determines the time (in minutes) between each automatic save.
 - The auto-saved design is stored in the autodigitizing directory with the file name “**autosave.asd**”. This file is replaced each time the auto-save function saves, and is used to create a working backup of your file so it won’t be lost if the program should close unexpectedly. (NOTE: When you manually save a design file through the File/Save As command, you give the design a name of your choice and save it to a location you specify.)
 - It is recommended that you always have the AutoSave option selected.
 - The **default interval between auto-saves is 10 minutes**. If you experience unexpected closure of autodigitizing due to insufficient memory or if you live in an area with frequent power failures, you may want to set the auto-save time to a lower setting such as 2 or 3 minutes. You may also want to set the auto-save to a lower number once you become proficient with the program and are able to make many changes in a short amount of time.
 - If the computer was not shut down properly the message "autodigitizing was not shut down properly, do you want to load the backup design?" will appear the next time you open autodigitizing. Click OK and the auto-saved file will be loaded to the working screen.

4. **Punch Method** controls the manual punching tools. Punch Method is selected by default. When this option is selected, you can draw on screen by Click + Hold and dragging the mouse. You will not have to click the individual points.

5. **Grid** opens the Grid dialog box. You will find that using a grid on the screen is helpful when trying to measure or line up elements.

Adjust the settings to your personal needs as follows:

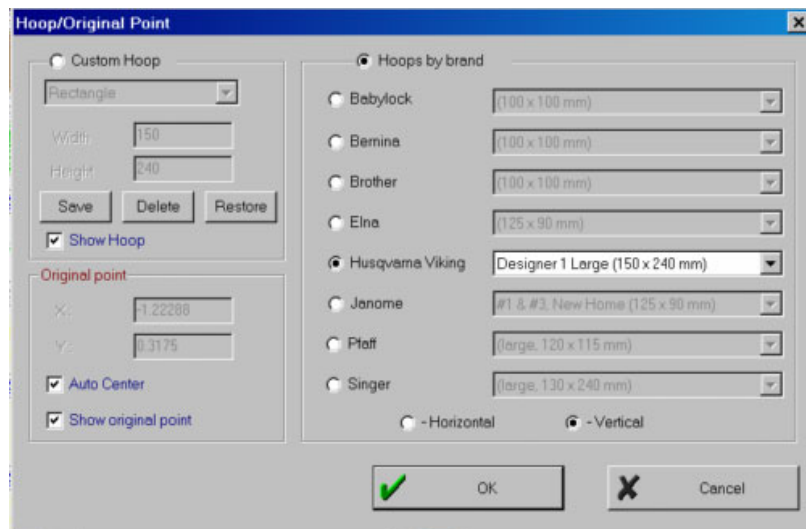
- **Color** – lets you adjust the grid color. Most people prefer the default color – black. To change it, click on the Color, and then click on a new color and click OK to accept.
- **Distance** – controls the distance between grid lines. If using a metric setting, a value of 10 is recommended (10 mm). If using inches, a value of 0.5 is recommended (0.5 inches). Distance may also be set to a



number of your choice to allow you to calculate size and placement of objects.


- **Type** – allows you to choose the type of grid: None, Dots or Lines. The “Dot” setting will display small dots at the intersection of grid lines. The “Line” setting will display a dashed-line grid style and the “None” setting will show no grid. Note: the grid is not visible when you are working in the 3D view mode.
- **Snap to grid** when moving – is helpful if you wish to align objects exactly along the same grid line, such as lettering or small repeated objects. As an object is dragged close to a grid line, it will “snap” and attach exactly along the grid. If placing objects and you do not want them aligned along a gridline, but prefer to fine tune the placement yourself, uncheck this option.
- **OK** – accepts the adjustments made in the Grid dialog box. You will return to the Display Preference box.

6. **Hoop** opens the Hoop/Original Point settings dialog box. Since each embroidery machine has specific hoop dimensions, the user must ensure that the design will fit into their hoop.



- **Custom Hoop** area allows you to choose the style/size of hoop from the drop down menu.
 - Click on the arrow to display the choices: square, rectangle, circle, ellipse, or one several pre-set hoop sizes.
 - If a shape is selected, you may enter custom measurements as follows:

Square:	Width (default at 200 mm)
Rectangle:	Width and Height
Circle:	Radius
Ellipse:	Radius X and Radius Y
 - Save the hoop you create by clicking on the Save icon and typing in your own custom hoop name. The next time you select a Custom Hoop, your new hoop type will be displayed in the drop down list with the name you typed.

- **Hoops By Brand** allows you to choose hoops by your machine brand.
 - Click in the circle next to the name brand of your machine.
 - Use the black arrow to show the hoop choices for your machine. Select the hoop size you wish to use.
 - Place a check beside **Horizontal or Vertical** to set the direction of the hoop.
 - When the **Show Hoop** option is checked, you will see a blue line representation of the hoop displayed on the working screen.
 - If you have selected this option and cannot see the hoop after accepting all of the changes, you are probably zoomed in on an area smaller than the hoop. Zoom out  a few of times to view a larger portion of the screen.
 - When **Auto Center** is checked, autodigitizing automatically locates the exact center of the design and will make stitching start and stop at this point. It is recommended that you always use this option. In special situations, you may want to uncheck the box. This will allow you access to the values for the X and Y position of the origin point.
 - **Original Point** controls where stitching starts and ends for the design. This should generally be the exact center of the hoop area. However it can be moved.
 - If you place a check in the box for **Show Original Point** a plus sign (+) will be displayed on your working area. The “+” indicates the start and end points of the design.
 - **OK** accepts the adjustments made in the Hoop dialog box. You will return to the Display Preference dialog box.
7. Clicking **OK** will close the Display Preference dialog box and accept the new settings. To exit without making any changes, click Cancel.