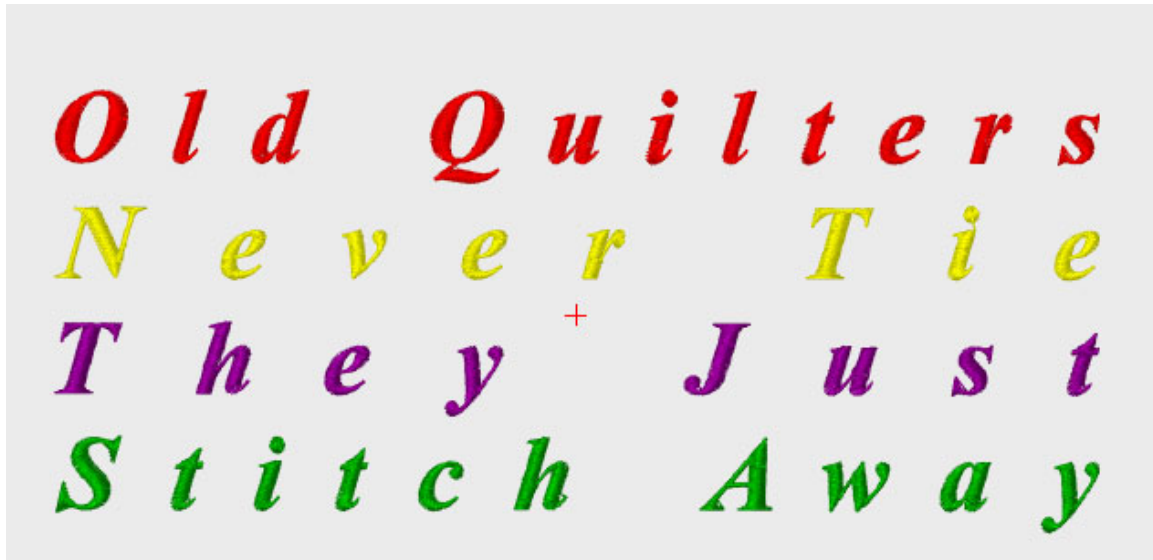

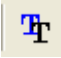


autodigitizing

Getting Started

Lettering 4: Multiple Lines of Text



1. Open autodigitizing, or click New Design  to get a blank screen if autodigitizing is already open.
2. Set Display Preferences for the hoop you plan to use. (This design is not appropriate for smaller sized hoops size). If using a rectangular hoop, select vertical.
3. Click on the  Insert TrueType Font icon on the toolbar. The Insert Text dialogue box will display.
4. In the Characters box, type “Old Quilters “. Press the Enter key and type a second line: “Never Tie”. Press the Enter Key and type a third line “They Just “. Press Enter once more and type a fourth line: “Stitch Away “.
5. Highlight all the lines of letters.
6. In the Style box under Text Property, select Times New Roman.
7. Use the down arrow key from the keyboard to scroll through the fonts, one at a time, until you find Times New Roman.

All computers will have differing fonts, depending on what has been installed. Additional fonts are available for purchase at software and computer stores. Fonts also often come with printers. True Type fonts will be recognized by autodigitizing.

8. In the Size window, select 8.89.
9. Deselect all lines of text by clicking in the blank area of the Characters box.
10. Select the first line of text. Change its color to Red by clicking the color tab in the Insert Letters property box.
11. Select the second line of text. Change its color to Yellow.
12. Select the third line of text. Change its color to purple.
13. Select the word "stitch". Change its color to green.
14. Select the word "away". Change its color to blue.
15. Select all letters and check "bold" and "italic".
16. Select "line" as the baseline type, with a check in On-Screen Input.
17. Leave the rest of the settings at the default.
18. Click OK to create the letters.
19. Click two points to form a horizontal line across the screen, to set the baseline. Remember, these two points will define the left and right edges of the text, and will set the Off Angle of the Baseline.
20. The text will be selected on the screen in outline mode.
21. Generate. Zoom all. Select 3D mode.
22. Place the mouse cursor over one of the boxes on the side of the letters. The cursor will turn into a 2-way arrow. Click+hold and drag outward to space the lettering wider. Notice the design width change at the bottom right of the Status Bar. (The multi-line lettering cannot be reopened at this point in the Insert Text mode.)
23. To enlarge or reduce the letter size, drag one of the corner boxes in or out. Notice the design change height and width in the Status Bar at the bottom of the display.
24. Generate after making changes to spacing or size.
25. Save as an ASD file: OldQuilters
26. Export as a stitch file: OldQuilters