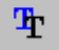
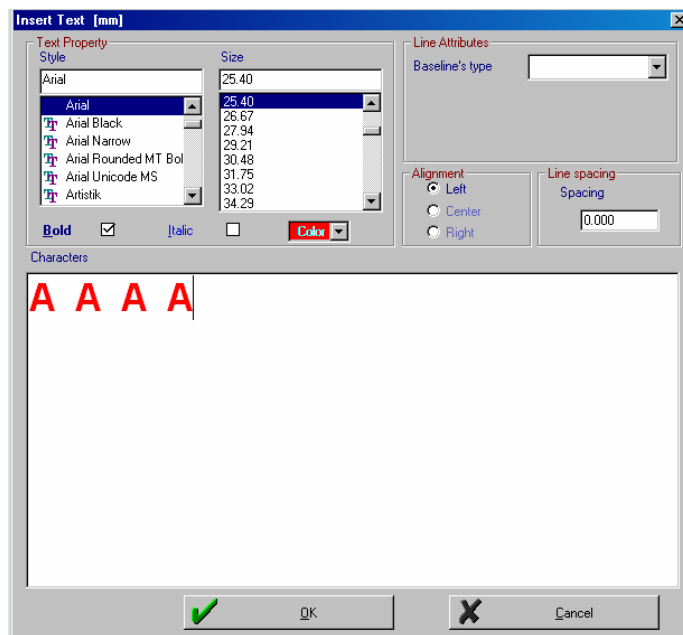



autodigitizing

Getting Started

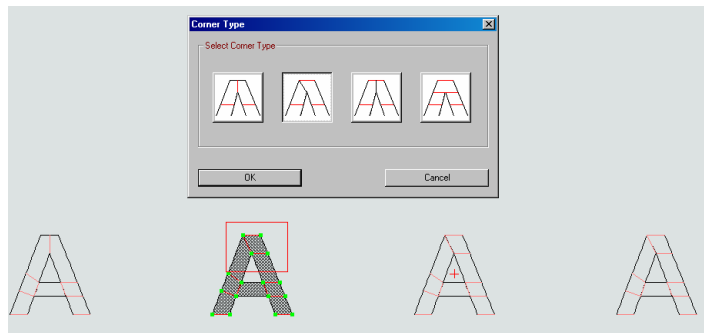
Adjusting Corner Types

1. Select the Insert True Type Font icon  from the top menu bar.
2. Select Arial Bold and type in four upper case letter A's, putting two spaces between each letter.
3. Highlight the letters.
4. Set size at 20.32. Change the color if you like. Leave all other settings at default.
5. Click OK to create the lettering.



6. Generate Stitches.
7. Select Block Mode  from the bottom tool bar.
8. Right click on the first letter A to select it. Right click on the letter again to open the pop up menu for Block mode, and choose Change Corner Type.
9. The mouse cursor will change to a circle with crosshairs. Drag and draw a box around the top corner of the first letter A. The Corner Options dialogue box should appear.

10. Click on the first corner type. Click OK. The first A should change to the new corner type.
11. Select the second letter A and right click again to open the Corner Options box. Select the second button, and Click OK to change the corner type.



12. Repeat selecting and changing corner type, using the third box for the third letter, and so on.

13. When you have changed each letter, generate stitches and view in 3D view.



14. Export in the correct format for your sewing machine. You may save an ASD file if you wish to open and re-edit later.

15. Stitch out the four A's so you have a sample of each corner type.

