

Heirloom Blouse



Sewing Supplies

- Husqvarna Viking sewing machine or sewing/embroidery machine
- Your favorite pattern for blouse
- Light weight linen fabric according to pattern
- Insertion lace
- Stretch elastic for sleeves
- White sewing thread
- White 40 wt. Embroidery thread
- 40 wt. Embroidery thread
- Woven stabilizer
- Huskylock
- Heirloom scissors (412 61 57-01)

Optional for sleeves:

- Embroidery card/disk/d-Card 48, Broderie anglaise by Kathy Harrison

Optional feet and accessories:

- Elastic Foot (412 46 64-45)
- Gathering Foot. (412 34 73-45)
- Smocking machine (412 47 04-26)
- Wing Needle (411 31 42-01)

We have made our own pattern for this blouse and below is described some of the techniques that you can use for your own favorite pattern for blouse.

SLEEVE

The edge of the sleeve is embroidered with design 9 from card/disk/d-Card 48. We have stitched the

outline stitches, color two only. If you do not have an embroidery sewing machine, you can draw your own curved edge with a pictogram pen on the sleeve piece and sew with a satin stitch along the markings with tear away stabilizer underneath the fabric. Use fray check on the edge to prevent the edge from fraying and cut away excess fabric outside the satin stitched edge. Illustration A.

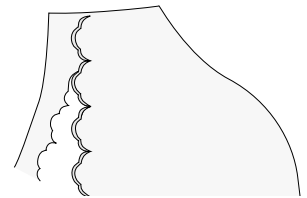


Illustration A.

A stretch elastic is stitched approximately 1 1/4"-2" (3-5 cm) from the edge of the sleeve. We have used the optional Elastic Foot. (412 46 64-45). See the Accessory User's Guide for instruction how to use optional feet that are available for purchase at your Husqvarna Viking Dealer.

NECKLINE

The neckline is decorated with a ruffled strip finished with a rolled edge. To sew this, measure the neckline opening. Cut a 1 1/4" (3 cm) wide strip in blouse fabric, at least twice the length of the neckline opening (depending on how much ruffles that are requested). Set up for rolled edge on a Huskylock. Thread an embroidery thread in the upper looper. Sew along a long edge and the short edges.

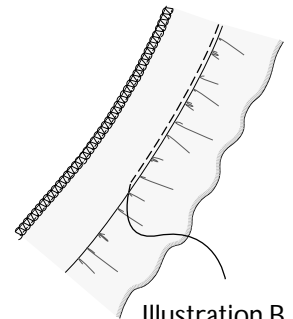


Illustration B.

The ruffles are sewn with the optional Gathering Foot (412 34 73-45). Place the neckline opening and lining right sides together with the gathered ruffle in between. Sew with straight stitch. Topstitch lining and seam allowance close to the seam to make the lining to stay on the inside. The ruffle is pressed slightly to lay flat along the neckline. Illustration B.

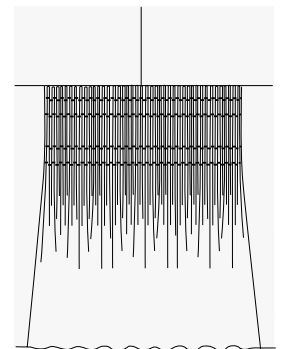


Illustration C.

SMOCKING

The side of the blouse is decorated with a smocked piece. For smocking, use a smocking machine. (Smocking Jenny 412 47 04-26). Press fusible stabilizer on the wrong side of the smocked piece. Select a favorite smocking stitch and stitch 4 rows of stitches on the smocked part. Cut out a 4" (10 cm) wide piece and insert it in the side of the blouse for ruffles on both front and backside. Illustration C.

INSERTION LACE

To insert the lace in the fabric, mark placement for laces on the right side of the fabric with a pictogram pen. Pin insertion lace in place on top of the markings and place tear away stabilizer underneath the fabric. Select straight stitch and snap on presser foot A. Stitch both sides of the lace to the fabric. Illustration D.

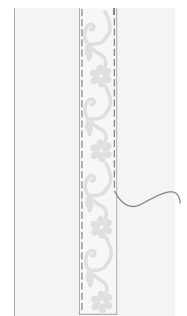


Illustration D.

Trim away the fabric underneath the lace. Insert a size 100 wing needle with embroidery thread in a color to match the lace. Select the entredeux stitch (D7) ¶. With presser foot D, sew along the sides of the lace again. Tear away the stabilizer. Illustration E.

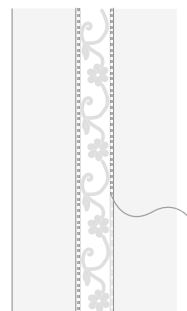


Illustration E.

LOWER EDGE

Instead of a regular hem, the lower edge of the blouse is finished with a rolled edge on a Huskylock. Use a decorative thread like 40 wt. Embroidery thread in the upper looper.



Husqvarna

VIKING