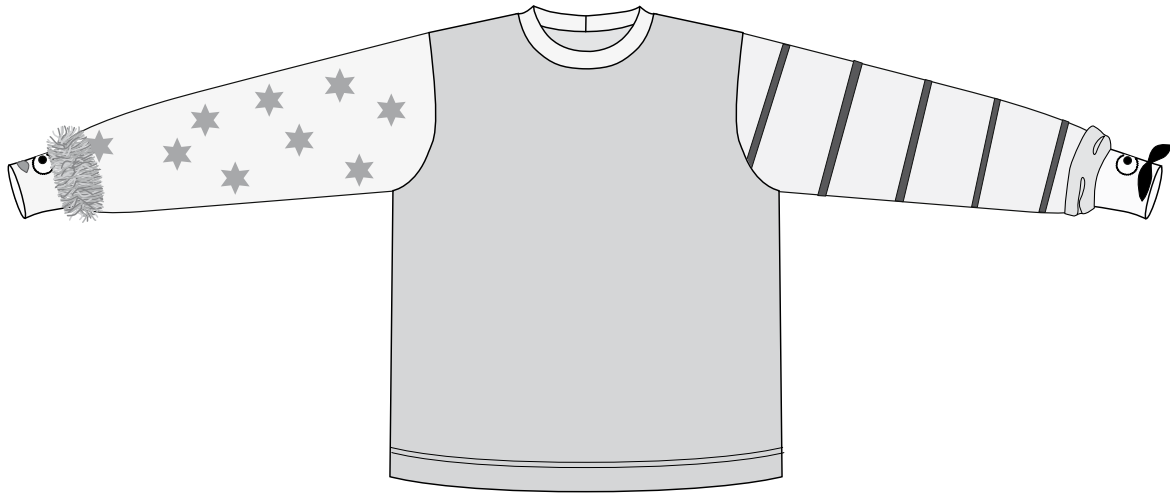


Knits for Kids





Girls Sweater

Sewing Supplies

- Burda pattern 9614 view A
- Green sweat shirt fabric for front and back piece, pink for 1 sleeve and dark yellow for the other sleeve (refer to pattern pieces for yardage)
- 20" x 3 1/2" (50 x 9 cm) of red rib fabric for neckline
- 10" x 4 1/2" (25 x 12 cm) of each pink, dark yellow and blue rib fabric for cuffs
- 2 1/2" x 3" (6,5 x 7,5 cm) of white felt fabric
- 5" x 2" (13 x 5 cm) of black felt fabric
- Scrap from red felt fabric
- 10" (25 cm) of yarn fringe
- Sewing thread to match fabric
- Rayon Embroidery thread

HUSQVARNA VIKING® Sewing Machines and Accessories

- HUSQVARNA VIKING® HUSKYLOCK™
- HUSQVARNA VIKING® Sewing Machine
- Open Toe Foot 412 80 09-45
- Optional HUSQVARNA VIKING® 4D Embroidery Software

You can find these and many other accessories in the HUSQVARNA VIKING® Accessory User's Guide or on our website www.husqvarnaviking.com, for purchase at your nearest HUSQVARNA VIKING® Dealer.

Seam allowance: Refer to the pattern

Cut out View A pattern, in the correct size.

Cut

Cut the front and back pieces from green fabric and one of each sleeve from pink and dark yellow fabric. Cut the neckline rib in red ribbing fabric.

Cut the sleeve cuffs 4 1/2" (12 cm) wide x 2" (5 cm) shorter than the width of sleeve from pink, blue and dark yellow rib fabric.

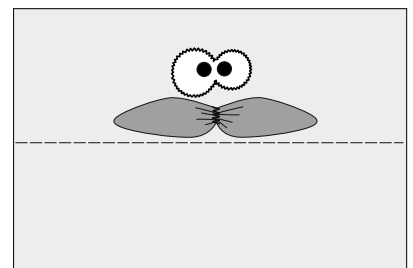
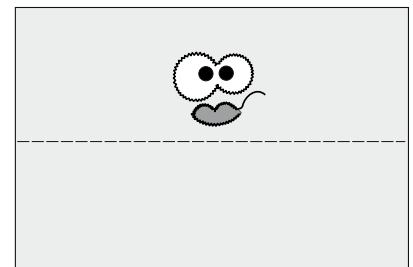
Make your own print fabric. Create stars dots, etc in the HUSQVARNA VIKING® 4D Embroidery Software and embroider them on fabric.

Sew

Sew the garment according to instructions in the pattern except for finishing the sleeve hems.

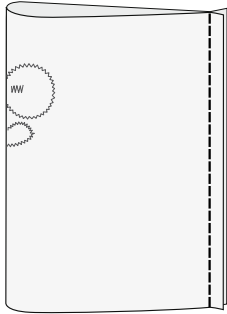
Decorate the cuff

From felt, cut the appliqué pieces: two eyes from white and black felt fabric, one mouth from red and one moustache from black. Place the appliqué pieces according to illustrations. Thread your HUSQVARNA VIKING® sewing machine with embroidery thread on top and bobbin thread in the bobbin. Snap on your Open Toe Foot. Select zigzag stitch A1:11. Sew the appliqués in place.



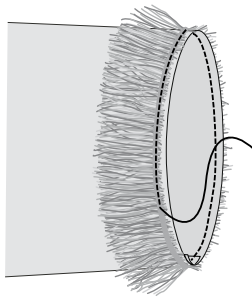
Sew the cuffs to the sleeve

Fold the cuffs right sides together, matching the short ends. Set your HUSKYLOCK™ machine for a 4-thread overlock. Thread with overlock thread. Sew cuff ends together with a 4-thread overlock seam.

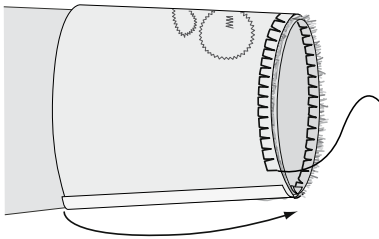


Pink sleeve:

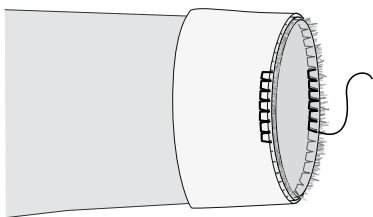
Pin the fringe along the lower edge of sleeve.



Place one long edge of the cuff, on top of the fringe. Sew in place with overlock 4-thread overlock seam



Fold the cuff in half, matching the cut edges. Sew the long sides together about 1" (2,5 cm) at two places at the sides.

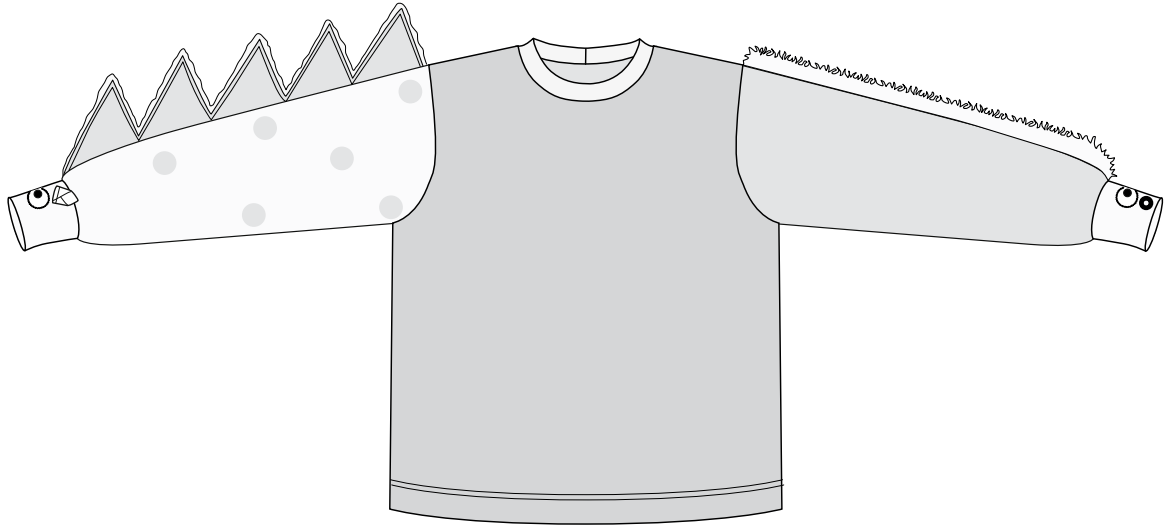


Dark yellow sleeve:

If you don't have striped fabric you can make stripes by sewing black ribbons across the sleeve.

On the other sleeve there are double cuffs. Fold the blue cuff in half and pin it around the sleeve end. Place one long edge of the yellow cuff, (the part that is decorated) on top of the blue cuff. Sew in place with 4-thread overlock seam.

Fold the cuff, sew the long sides together about 1" (2,5 cm) at two places at the sides. When the cuff is folded back, you can put two of your fingers inside the cuff and use it as a glove puppet.



Boys sweater

Sewing Supplies

- Burda pattern 9814 view A
- Red sweat shirt fabric for front and back piece, blue for one sleeve and the dinosaur edge and yellow for the other sleeve (refer to pattern pieces for yardage)
- 10" x 4½" (25 x 12 cm) of each yellow and blue rib fabric for cuffs
- 20" x 3 1/2" (50 x 9 cm) of green rib fabric for neckline
- 2 1/2" x 3" (6,5 x 7,5 cm) of white felt fabric
- 5" x 2" (13 x 5 cm) of black felt fabric
- Scrap from yellow felt fabric
- 2½" (6,5 cm) x the length of sleeve of green fur fabric
- 4" (10 cm) x the length of sleeve of blue sweat shirt fabric
- Approx 1 yard (1 m) yarn
- 4" x 20" (10 x 50 cm) of batting
- Sewing thread to match fabric
- Rayon Embroidery thread

HUSQVARNA VIKING® Sewing Machines and Accessories

- HUSQVARNA VIKING® HUSKYLOCK™
- HUSQVARNA VIKING® Sewing Machine
- Open Toe Foot 412 80 09-45

- Narrow Braid/Cord Foot 411 85 09-45
- Optional: HUSQVARNA VIKING® 4D Embroidery Software

You can find these and many other accessories in the HUSQVARNA VIKING® Accessory User's Guide or on our website www.husqvarnaviking.com, for purchase at your nearest HUSQVARNA VIKING® Dealer.

Seam allowance: Refer to the pattern

Cut out View A pattern, in the correct size.

Cut

Cut the front and back piece from red fabric and one of each sleeve from blue and yellow fabric. Cut the neckline rib in green rib fabric.

Cut the sleeve cuffs 4½" (12 cm) wide x 5 cm shorter than the width of sleeve from pink, blue and dark yellow rib fabric.

Cut the fur 2½" (6,5 cm) x the length of sleeve.

From blue fabric, cut two pieces of the dinosaur template (zigzag) template, make them the same length as your sleeve.

From batting, cut 3" (7,5 cm) x the length of sleeve.

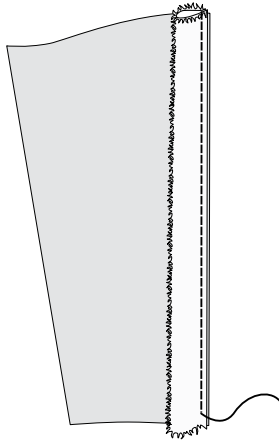
Make your own print fabric. Create stars, dots, etc in the HUSQVARNA VIKING® 4D Embroidery Software and embroider them on fabric.

Sew

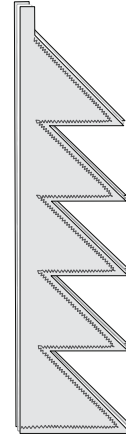
Fold the sleeve in half lengthwise, and cut up the fold.

Blue sleeve with fur:

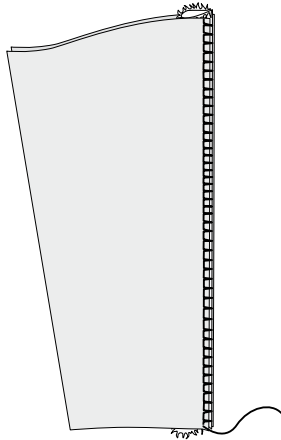
Fold the fur lengthwise, wrong sides together. Pin the fur on the right side of one of the sleeve pieces.



Trim away the extra fabric and batting close to the seam.

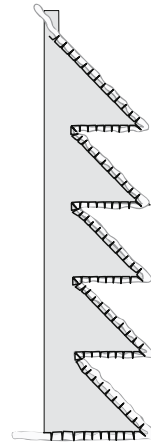


Place the other sleeve piece on top. Set your HUSKYLOCK™ machine for a 4-thread overlock. Thread with overlock thread and sew the pieces together.



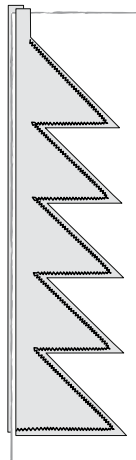
Place yarn along the zigzag edge. Snap on Narrow Braid/Cord Foot. Select Stitch #A1:16.

Sew the yarn in place. Place the dinosaur piece to the sleeve in the same way as you did with the fur.



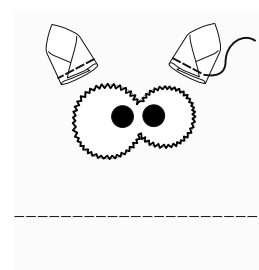
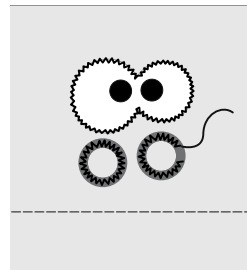
Yellow sleeve with dinosaur zigzag:

Place the dinosaur pieces wrong sides together with the piece of batting in between. Thread your sewing machine with sewing thread in top and bobbin. Select A1:12 zigzag stitch, right position. Adjust the width to 2.5 and the length to 2.5. Sew the layers together about 1/4" (5 mm) from the edge. Align the edge of foot with the edge of fabric.



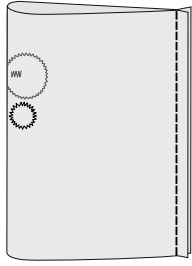
Decorate the cuff

Cut the appliqué pieces from felt - two eyes from white and black felt fabric, two ears from yellow felt and two nostrils from black felt. Place the appliqué pieces according to illustrations. Select zigzag stitch A1:11. Snap on your Open Toe Foot. Sew the appliqué in place.

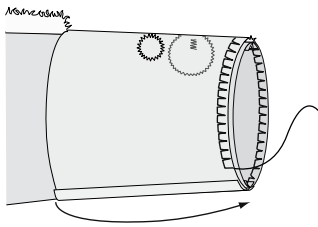


Sew the cuffs to the sleeve

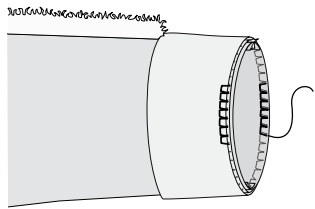
Fold the cuffs right sides together, matching the short ends. Set your HUSKYLOCK™ machine for a 4-thread overlock. Thread with overlock thread. Sew cuff ends together with a 4-thread overlock seam.



Pin one long edge of the cuff, (the part that is decorated) right side with the sleeve edge. Sew in place with a 4-thread overlock seam.



Fold the cuff, sew the long sides together about 1" (2,5 cm) at two places at the sides.



Finished

