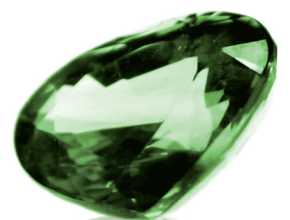


Emerald Cuttlery Holder



Emerald

Sewing Supplies

- Linen Fabric
- Cotton ribbon
- 30 wt. cotton thread *
- Sewing thread **
- Inspira Topstitch needle (6200714-96)*
- Open Toe foot (4128009-45) *
- Clear B Edge / Joining foot (4130584-45) **
- Pictogram Pen (4120838-48)
- Tear-A-way stabilizer

