



fleece Jacket

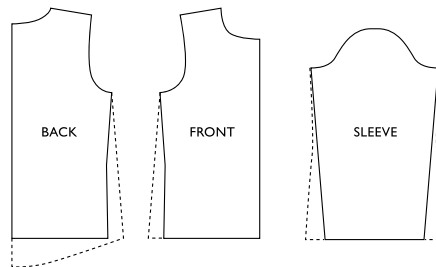
Designed and created by:
Anna Haraldsson and Annika Svedberg.

Your children will love this warm and cozy Fleece Jacket! Use your HUSQVARNA VIKING® sewing machine to embellish the fleece with some lovely flower appliques on the pockets and beautiful decorative stitches on the sleeves.

Level: II

SEWINGSUPPLIES

- HUSQVARNA VIKING® sewing machine
- Use your favorite pattern for a fleece jacket.
- 1 1/4 yd (115 cm) Orange fleece fabric for jacket
- 1/4 yd (20 cm) Red velvet fabric for flower appliques
- Yellow fabric scraps for flower appliques and zipper
- Yellow velvet ribbon 31 1/2" (80 cm), 3/4" (2 cm) wide
- One red separating zipper 20" (50 cm)
- 40 wt Embroidery thread
- Sewing thread to match the fabric
- Bobbin thread
- Fusible Seam binding
- Fusible web
- Interfacing



PATTERN

Use a pattern for a fleece jacket or make your own from a sweatshirt pattern. Place the pattern on pattern paper and modify the pattern as illustrated to add fullness at the hip, a curve in back and more width in the sleeve. Trace the pattern pieces for the flower appliques onto pattern paper. Cut out.

CUT

Cut out the pattern pieces in fleece fabric seam allowances included. Cut two circles, 6" (15 cm) in diameter, from fleece fabric for pockets.

Trace two flowers onto fusible web. Iron them to wrong side of the red velvet fabric. Cut out the flowers.

Trace two circles onto fusible web. Iron them to wrong side of the yellow fabric. Cut out the circles.

Cut one strip 3 1/4" (8 cm) x 1 1/2" (4 cm) for the zipper tab. Cut the yellow velvet ribbon in half

into two pieces. Cut two strips of fusible web the same size as the velvet ribbons.

INTERFCING

Cut out interfacing for the collar piece and iron to wrong side of the collar fabric piece.

SEW

Pockets

Remove the paper from the fusible web on the red velvet flower. Place the flower on top of the orange fleece circle. Iron in place using a press cloth. Thread your HUSQVARNA VIKING® sewing machine with orange embroidery thread on top and sewing thread in bobbin. Select straight stitch. Topstitch near the edge. Repeat with the other flower.

Remove the paper from the fusible web on the yellow circle. Place the circle on top of the red flower. Iron in place using a press cloth. Rethread with yellow embroidery thread on top and sewing thread in bobbin. Topstitch near the edge. Repeat with the other pocket.

Pin the pockets in place on the front pieces. Rethread with orange sewing thread on top and in bobbin.

Topstitch near the edge. Leave an opening of about 5" (13 cm) for the pocket opening.

SHOULDER SEAMS

To prevent shoulder seams from stretching: Cut one piece of fusible seam binding to match each front shoulder edge. Iron each piece to back shoulder edge, easing the edge slightly.

Lay front piece on back piece, right sides together. Stitch shoulder seams. Press seam allowance towards the back and topstitch from the right side, 1/4" (6 mm) from the seam.

COLLAR

Stitch collar to neck edge, right sides together. Trim seam allowance and press toward collar.

FRONT EDGES/ZIPPER

Place the zipper right sides together with the front edge and stitch guiding the edge of the foot against the zipper teeth. Turn the seam allowance to the wrong side and topstitch.

Zipper Tab: Turn under 3/8" (1 cm) on the long sides and one short side of the yellow strip and press. Fold in half lengthwise wrong side together and press. Topstitch near the edge all around. Thread the strip in the hole of the zipper tab. Fold down and stitch in place.

Turn collar to inside along fold line and baste inner edge to seamline. Sew inner front edges of collar to zipper tapes by hand. Working from the right side, stitch along collar seam, catching inner edge of collar.

EMBELLISH THE SLEEVES

Iron the fusible web strips to wrong side of the yellow velvet ribbons. Remove the paper from the fusible web. Place the ribbon on the sleeve, 6" (15 cm) from the lower edge. Iron in place. Embellish the ribbon with one of the decorative stitches from your HUSQVARNA VIKING® Sewing Machine.

SETTING IN SLEEVES

Pin sleeve to armhole edge, right sides together. Match horizontal marks on sleeve and jacket front

and horizontal mark on sleeve cap and shoulder seam. Working from the sleeve side, stitch the sleeve to armhole. Trim seam allowance and press toward shoulder. From the right side topstitch near the edge.

SIDE/SLEEVE SEAMS

Stitch the side/ sleeve seams, right sides together. Press seams open.

HEM

Finish lower edge of jacket: Turn hem under and press. Stitch hem to front edges/zipper by hand. From right side topstitch 1 1/4" (3 cm) from lower edge, catching hem edge. Finish lower edge of sleeves: Turn hem under 2 3/4" (7 cm) and press. Pin. From right side, stitch along ribbon edge, in the ditch, catching hem edge.

