

Bag for decorating



Sewing Supplies

- *Husqvarna Viking sewing machine*
- *2/3 yd. (60 cm) denim, canvas or other home dec weight fabric for outside bag and facing Interfacing*
- *50" (130 cm) of 2" (5 cm) wide bias trim.
(This could be fabric the bag is made from or contrast).*
- *1/2 yd. (40 cm) of lining fabric*

Cut

Print out the pattern pieces and cut out. Tape the two A-patterns together for outside bag. Fold the fabric in fourths, like a napkin. Place the pattern along the folded edges and cut out one piece in fabric and interfacing. Fuse the interfacing to the wrong side. Cut out the handle holes according to the marked lines. Cut one piece in lining fabric from pattern piece C and two pieces in fabric and interfacing for facing from pattern piece B. 1/4" (6 mm) seam allowance included in all measurements.

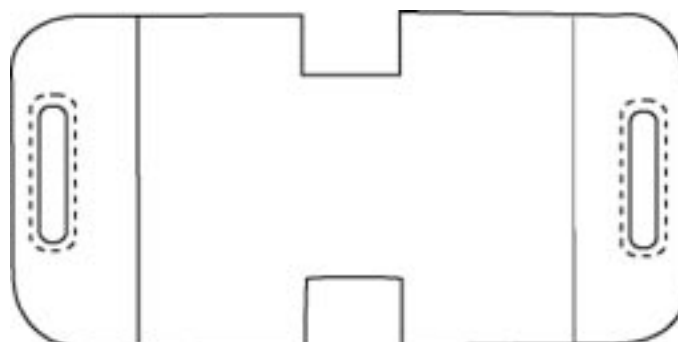
Decorate

Decorate your bag with embroideries, decorative stitches, free motion stitching or whatever you wish. Play with all kinds of sewing techniques, threads or use optional Husqvarna Viking accessory feet.

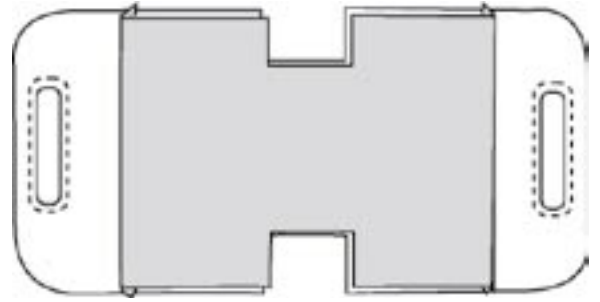
Sew

Fuse interfacing to the wrong side of the two facing pieces. Cut out the handle holes, on the marked lines.

Match the facing pieces right sides together with the bag. Stitch around the handle holes using a 1/4" (6 mm) seam allowance. Trim and notch seam allowance and turn the facing pieces to the wrong side through the holes. Press. Topstitch around the holes.



Pin and sew the lining piece right sides together with the bottom of one of the facing pieces. Repeat for opposite side. Turn and press. The lining is now in place, and the sides are un-sewn, as shown. Cut two bias trims, each 25" (65 cm) long. Fold in half lengthwise, wrong sides together. Press.

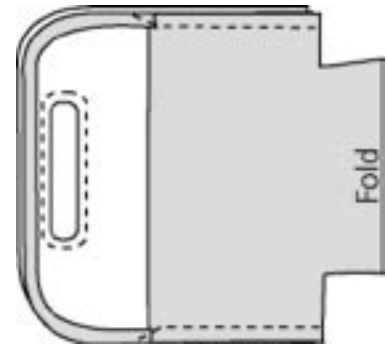


Begin 5/8" (1.5 cm) below where the lining meets the facing, place the bias on the wrong side of the bag top, with the raw edges even. Stitch a scant 1/4" (6 mm) seam allowance. Trim if necessary. Fold the binding to the right side and press. Select zig zag or the appliqué stitch (F11), mirror it side to side and stitch the binding in place.

Fold the bag right sides together, matching the side seams. Begin stitching by the bias binding. Stitch from the edge, diagonally over to create a 1/2" (1.5 cm) seam allowance. Stitch to the bottom as illustrated. Overcast the raw edges of the seam.

Match the bottom cut edges to form the bottom and sew. Overcast the seam.

Turn the bag right side out.



 **Husqvarna**

VIKING

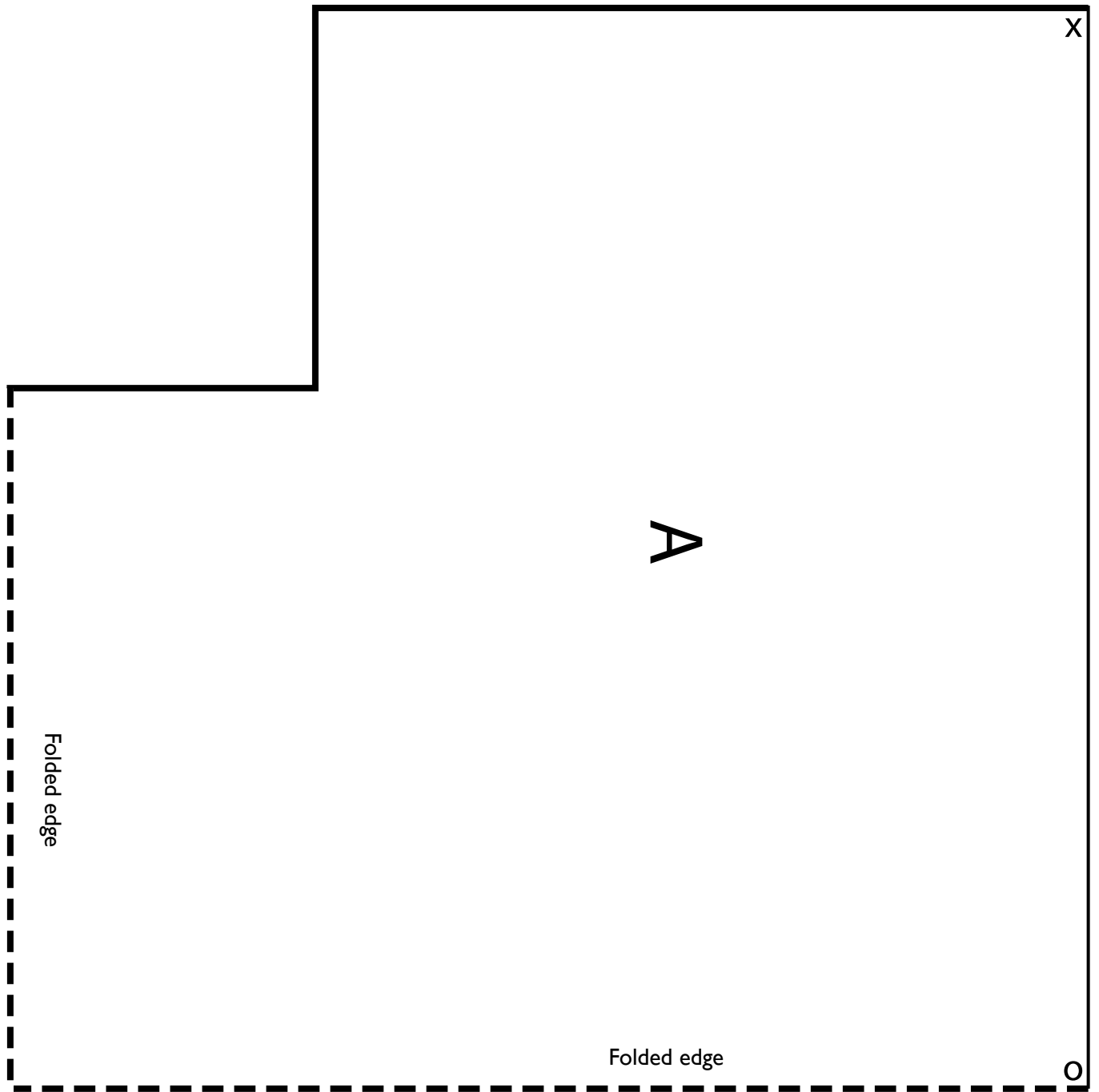


Illustration A.

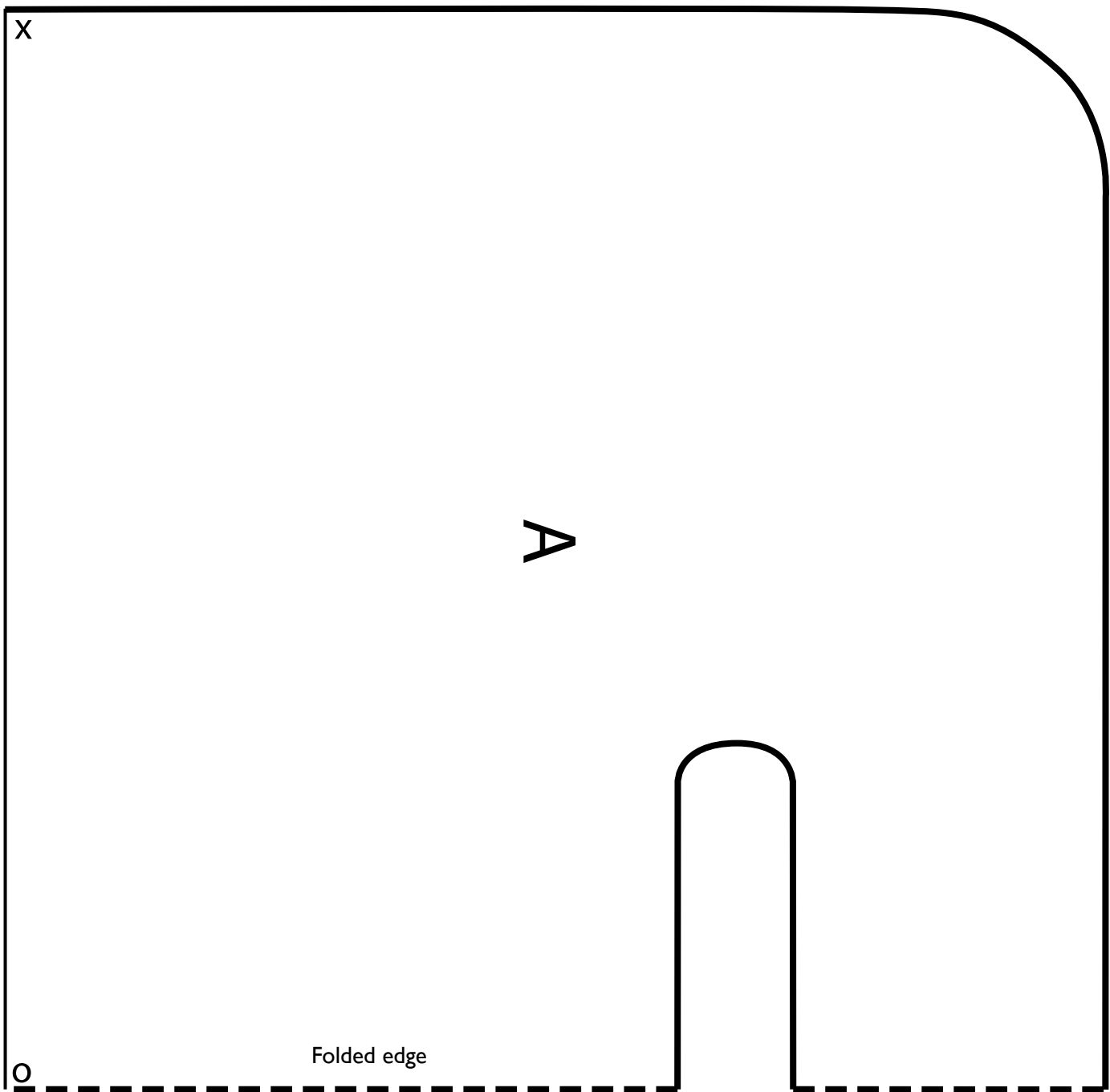


Illustration A/2.

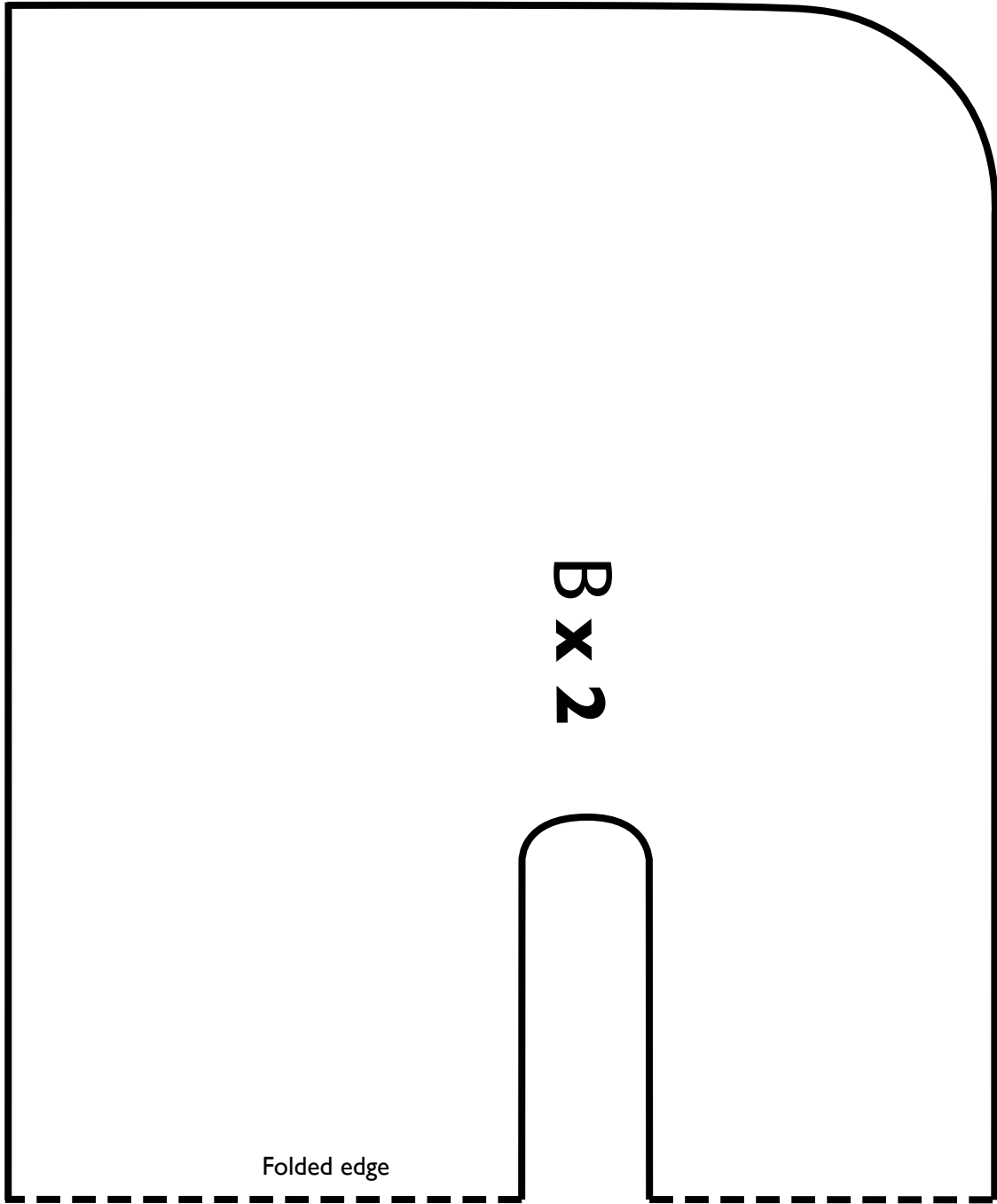


Illustration B

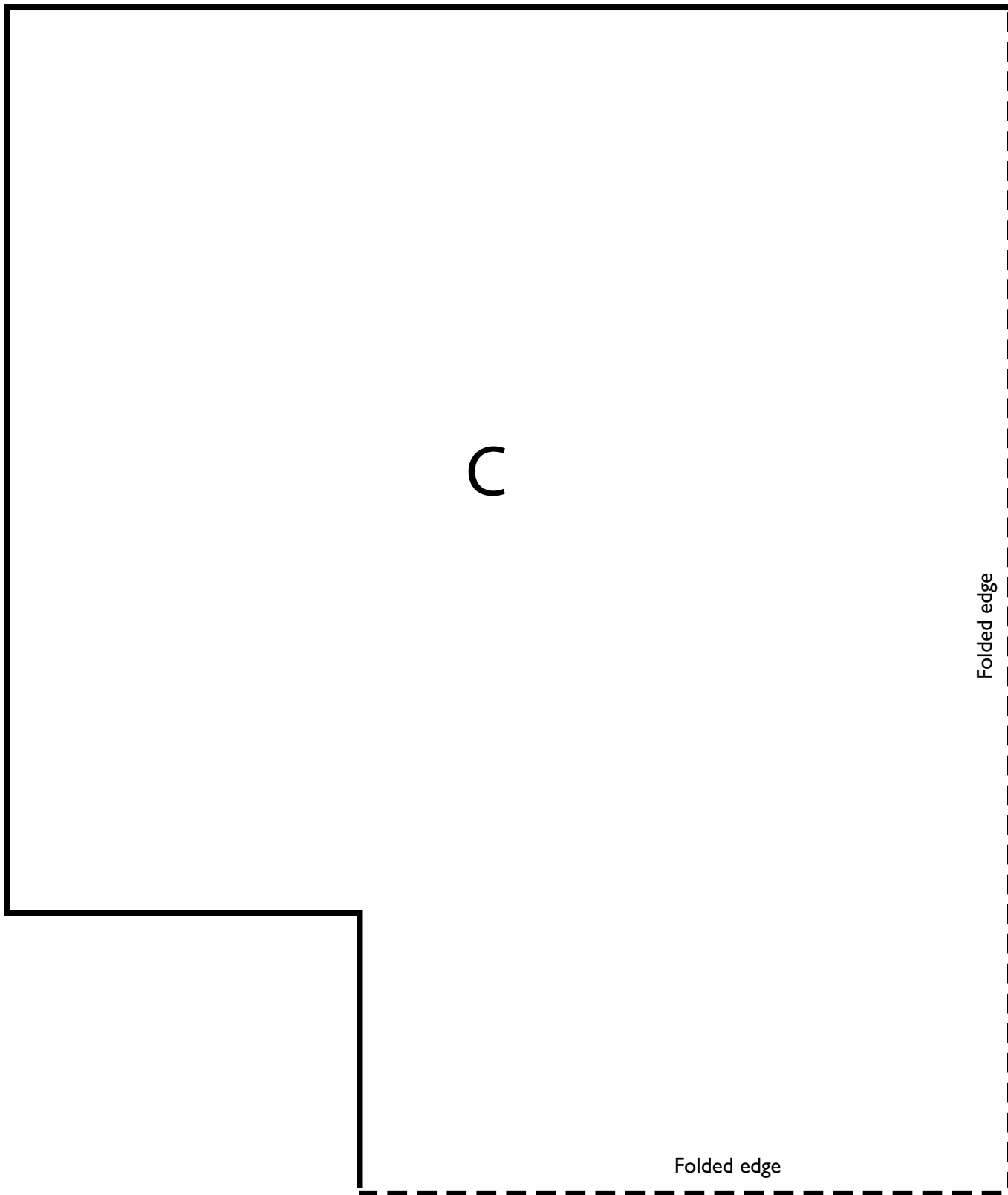


Illustration A.



 **Husqvarna** **VIKING**