

Flatlock fashion  
Sweater

*Huskylock*™ s15



## Sewing supplies

- HUSQVARNA VIKING® HUSKYLOCK™ s15
- Burda pattern 8028 view B
- White sweat shirt fabric (refer to pattern for yardage)
- 4 spools of white overlock thread
- Sewing thread to match the fabric
- 3 spools of blue, red and white 30 W Rayon embroidery thread (for the decorative flatlock)
- Pictogram Pen
- Pins

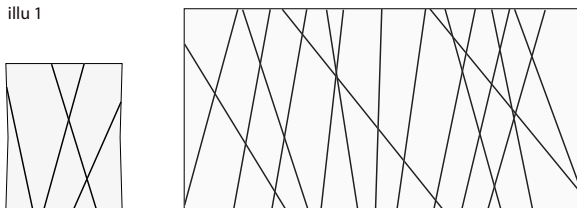
## Cutting Instructions

Cut out the required pattern pieces from the paper pattern. Check your pattern to be sure seam allowances are included. If not, add 5/8" (1.5 cm) seam allowance. Using the pattern pieces, cut the pieces from fabric.

## Embellishing the collar and sleeve cuffs:

On the collar and sleeve cuffs mark lines with a pictogram pen where you want your decorative flatlock stitching. Mark on both the wrong side and the right side of the fabric. Illustration 1

illu 1



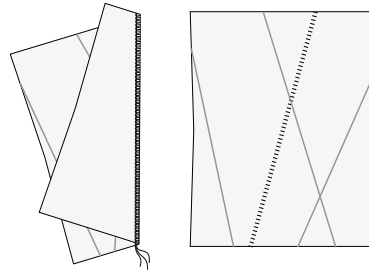
Decide on the colors to stitch each of the rows of flatlock stitching.

Set your HUSKYLOCK™ s15 for a 3-thread

flatlock stitch and thread with blue embroidery thread. Refer to your User's Guide for instructions on how to set up for a 3 thread flatlock seam.

Fold the fabric along a marked line and sew a flatlock stitch along the edge of the fold from the wrong side of the fabric. Unfold the fabric and pull the fabric flat to see the ladder stitch embellishment. Illustration 2

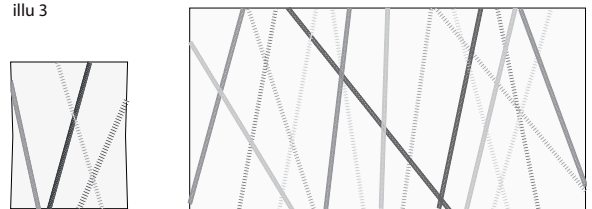
illu 2



Tip: Practice first on scraps until you have the effect you want. A very loose needle tension and stitching slightly off the edge of the fold will result in a "flatter" flatlock and ladder stitch.

Sew all the blue rows of flatlock stitching on the collar and the cuffs. To get a different look, stitch some of the flatlock rows from the right side of the fabric and some from the wrong side of the fabric. When you stitch along the fold from the wrong side, a ladder stitch will be on the right side. When you stitch along the fold from the right side, the flatlock stitch will be on the right side.

illu 3



Change to red embroidery thread and sew all the red flatlock rows in the same way and then stitch flatlock rows with the white thread.

## Sewing

- Set up your HUSKYLOCK™ s15 for a 4 thread overlock and thread with white overlock thread.

Finish sewing the sweater according to the sewing instructions in the pattern.