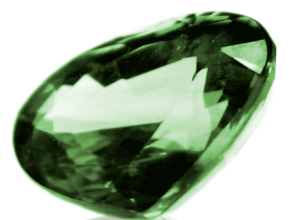


Emerald Napkin ring



Emerald

Sewing Supplies

- Linen Fabric
- Cotton cord 22" (56cm)
- 1 Button
- 30 wt. cotton thread *
- Sewing thread **
- Inspira Topstitch needle (6200714-96)*
- Transparent foot B (4127982-45)
- Tear-A-way stabilizer

