

Sewing Machine Cover



Sew a soft cover for your new Romeo or Juliet Sewing Machine!
Our cover is made from a plastic coated fabric which does not fray. Other fabric choices include felt or artificial suedes.

Sewing Supplies

7/8 yd. (70 cm) of plastic coated fabric, at least 45" (114 cm) wide

Fabric scraps for appliques

Polyester sewing thread in a color to match the fabric

Sulky Rayon Embroidery Thread 30 wt. in a darker color

Pinking Shears

Pictogram Pen

Fabric Glue stick

Optional Accessories:

Smooth Glide Foot H for vinyl and artificial suede

3/8" (1 cm) seam allowance included.

Print the pdf-file with the threads and scissors applique pieces and the pattern for the side piece. Cut out the pattern.

A=front

B=Back

CUT

1 rectangular piece 26" (67 x 40) for the front and back.

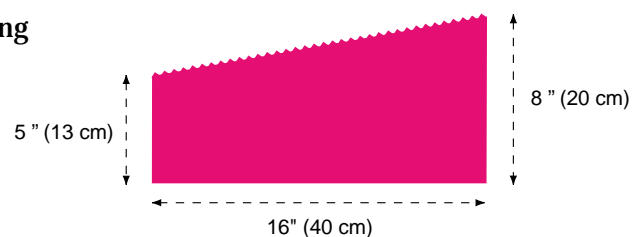
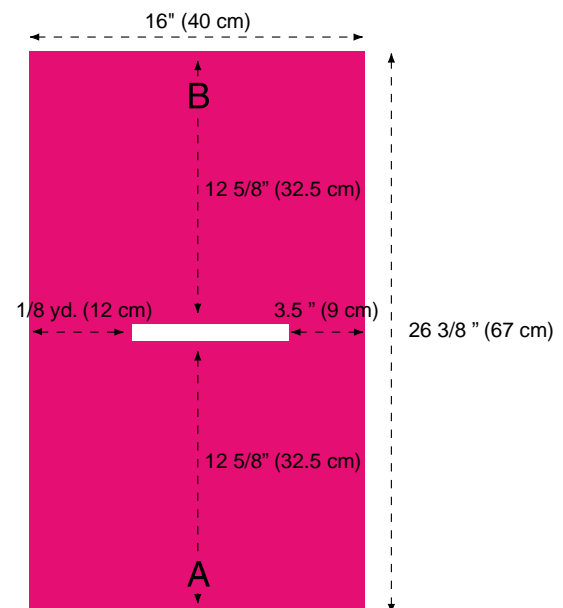
1 pocket using measurements illustrated.

2 side pieces from the pattern.

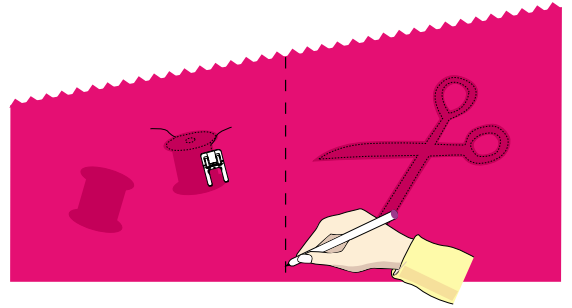
Scissors and thread appliques. Mark the innerlines of the spool and thread detail with a Pictogram pen.

SEW

Mark an opening 3/4" x 7,5" (2 x 19 cm) for the handle according to the measurements on the illustration. Cut it out with pinking shears.



Mark a center on the pocket with a Pictogram pen to mark the pocket in two. Use a Fabric gluestick to glue the thread appliqué to the left pocket side and the scissors appliqué to the right. Sew them with straight stitch along the outer edge. Sew on the marked lines for the top of the threads.

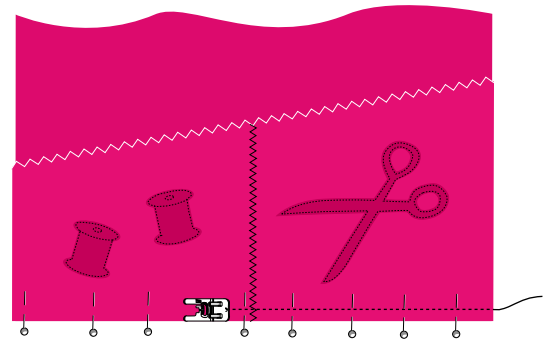


Place the pocket on the cover, matching the edges, right side up. Sew the lower pocket edge to the lower cover edge with straight stitch, stitch length 2.5 with $\frac{1}{4}$ " (5 mm) seam allowance. Glue the pocket side edges to the front sides.

To divide the pocket in two pockets, sew a straight stitch, stitch length 3.0 on the marked line.

Pin the side pieces and the long sides of the rectangle wrong sides together. Sew together with $\frac{1}{4}$ " (6 mm) seam allowance.

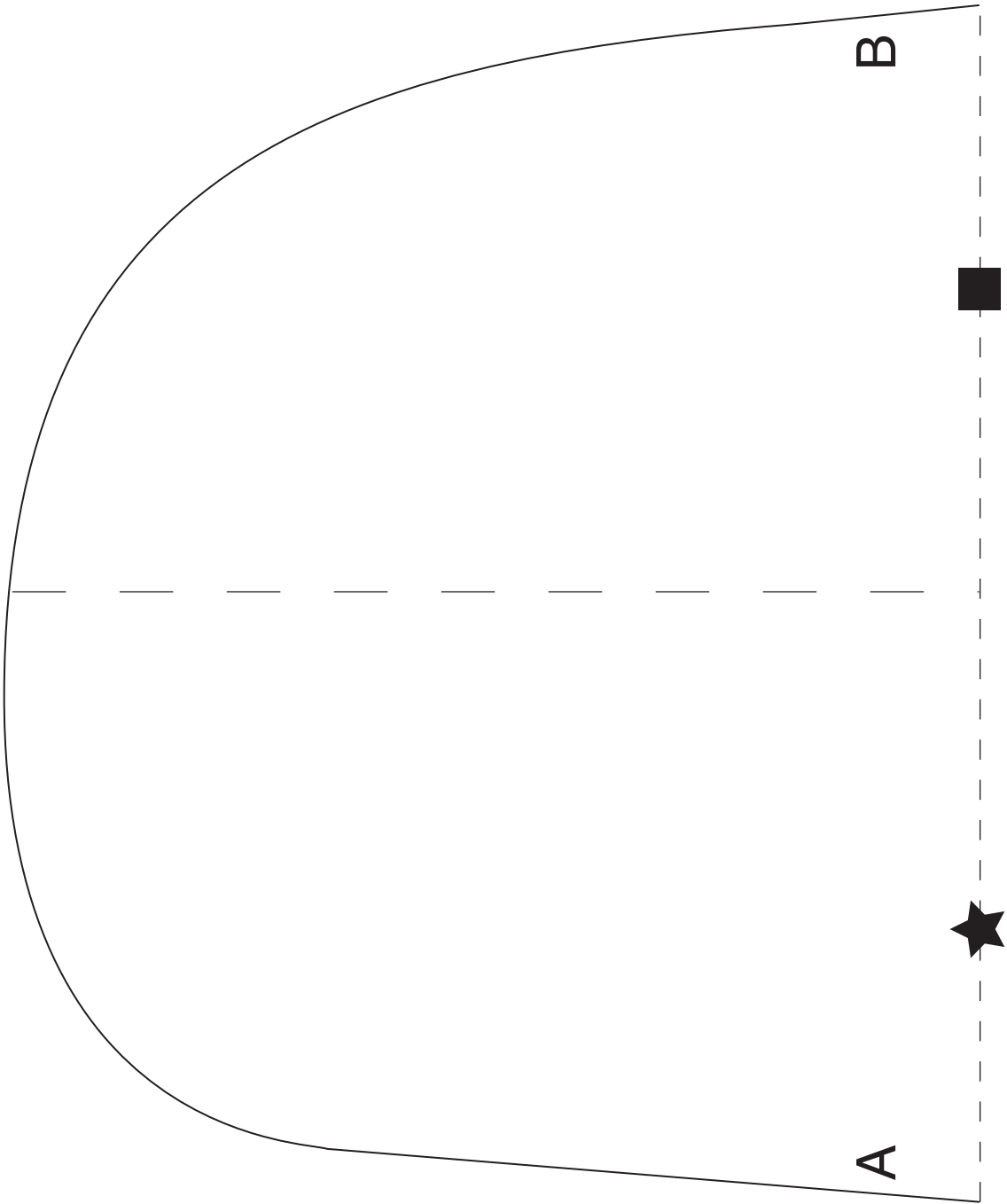
Trim all seam allowances and outer edges with a pinking shears.



 Husqvarna

VIKING

1a



1b

