

## Leopard Outfit



### **Sewing Supplies**

- For jogging outfit Burda pattern 3689
- Shoes Burda pattern 9963
- Leopard patterned fabric:
  - For jogging outfit according to pattern instructions + approx 1 2/3 yd (1.5 m) for hood, tail, gloves and shoes
  - Scraps of leather for claws
  - Glue
  - Sewing thread, black
  - Steelwire for ears
  - Fiberfill for tail
  - 4" (10 cm) Velcro for hood and tail
  - Elastic for gloves and shoes
- Optional:
  - Fasturn (412 55 08-01)

### **JOGGING OUTFIT**

#### **CUT & SEW**

Cut and sew the jogging outfit according to the pattern instructions.



## HOOD

### CUT

Print out the pdf files with the pattern. Cut out pattern pieces in leopard fabric.

Add 3/8" (1 cm) seam allowance on all sides.

- (A) side piece (cut four)
- (B) top piece (cut two)
- (C) yoke piece front (cut two)
- (D) yoke piece back (cut two)
- (E) ear piece (cut four)



### SEW

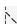
Place two pieces for an ear right sides together. Snap on presser foot J. Select an seam/overcast stitch . Stitch around the sides. Fill the ear with a little fiber fill. Snap on presser foot A. Topstitch with straight stitch 5/8" (1.5 cm) from the edge and to stitch a small casing. Insert a piece of steelwire. (Bend the ends of the steel wire and tape them to not damage). Sew the other ear in the same way. (Illustration E).



Illustration E

Place the ears in the darts of the side pieces. Stitch the ears in place from the wrong side. (Illustration F)

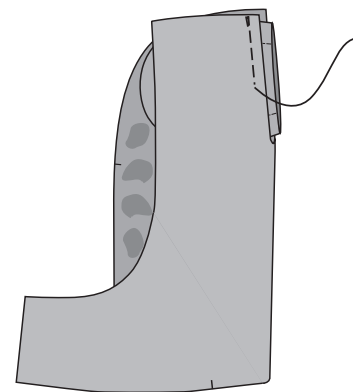



Illustration F

Sew the darts of the top piece. Pin the top piece with the side pieces wrong sides together and stitch with presser foot J again and a seam/overcast stitch . Sew darts and seams of the lining hood. Pin front edges of the lining hood and outside hood, right sides together. Stitch and turn. (Illustration G).

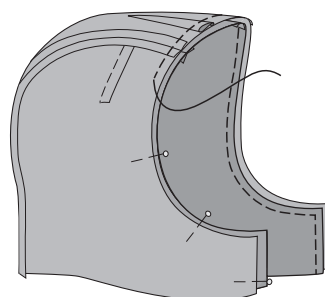


Illustration G

Stitch the yoke pieces to each other. Overcast all edges and fold the front edges of the yoke 1" (2.5 cm) to the inside. Topstitch in place. (Illustration H).

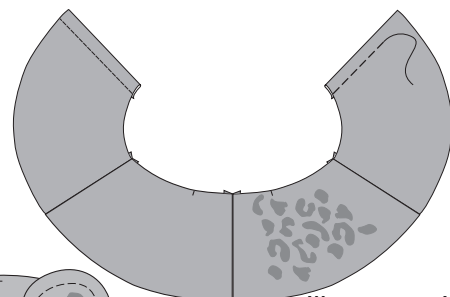


Illustration H

Pin and sew the yoke piece to the outer hood piece. Fold the seam allowances to the inside and top stitch along the edge. Topstitch the front edge of the hood with 1/4" (6 mm) seam allowance.

Fold and sew a 1/4" (6 mm) narrow hem on the yoke.

With straight stitch and presser foot A, stitch velcro pieces to the front of the hood. (Illustration I).

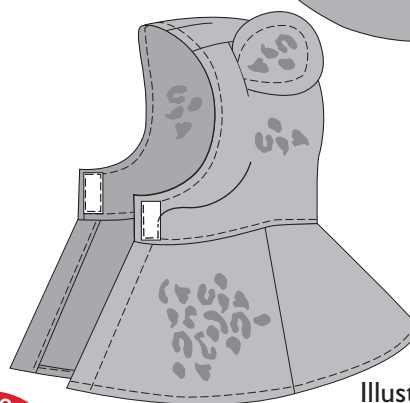
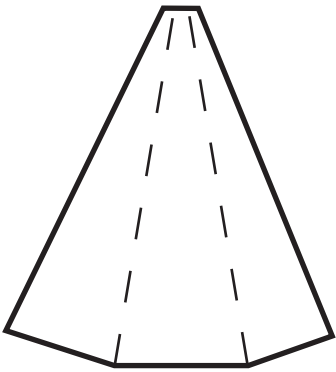


Illustration I

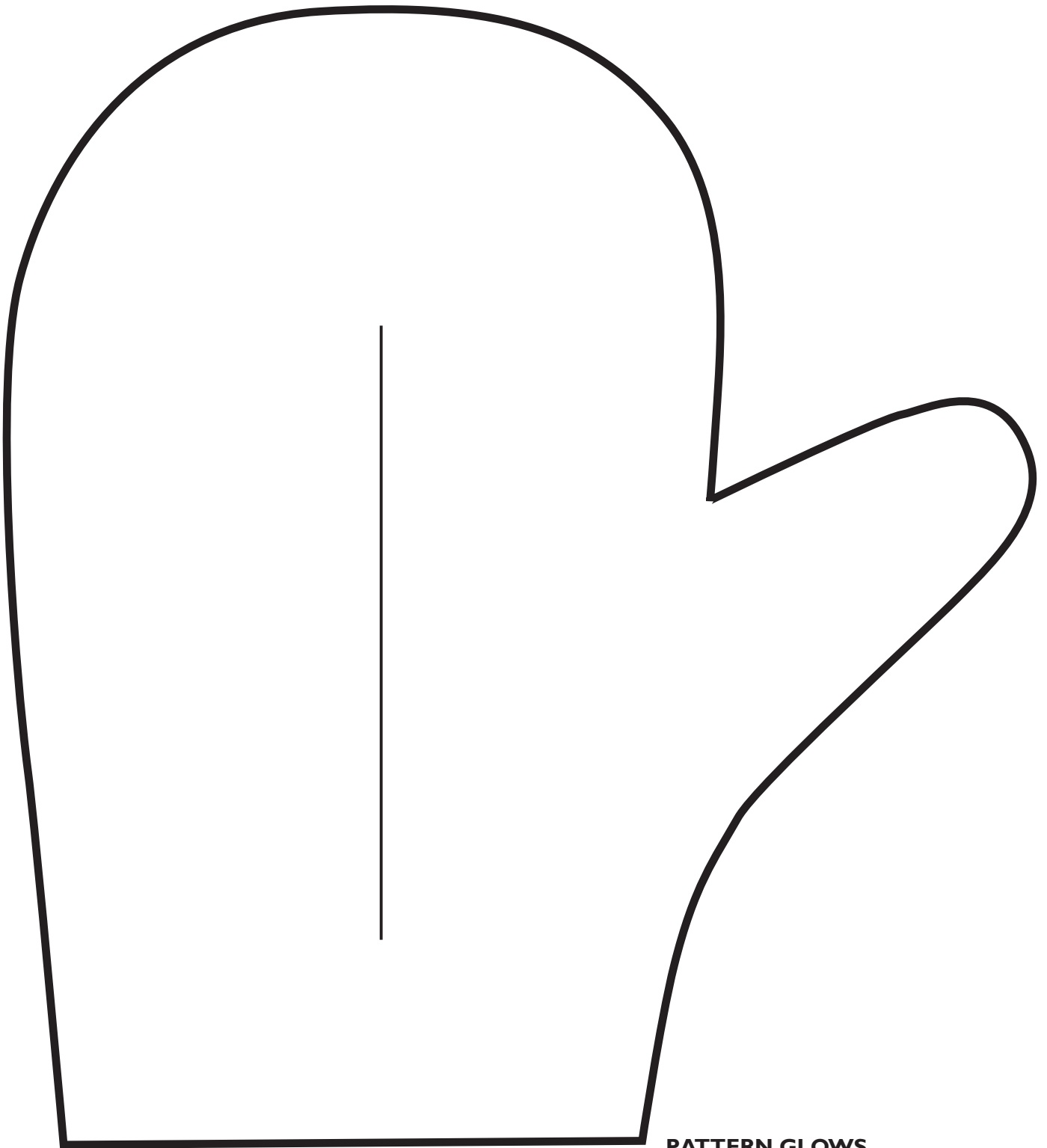


 Husqvarna

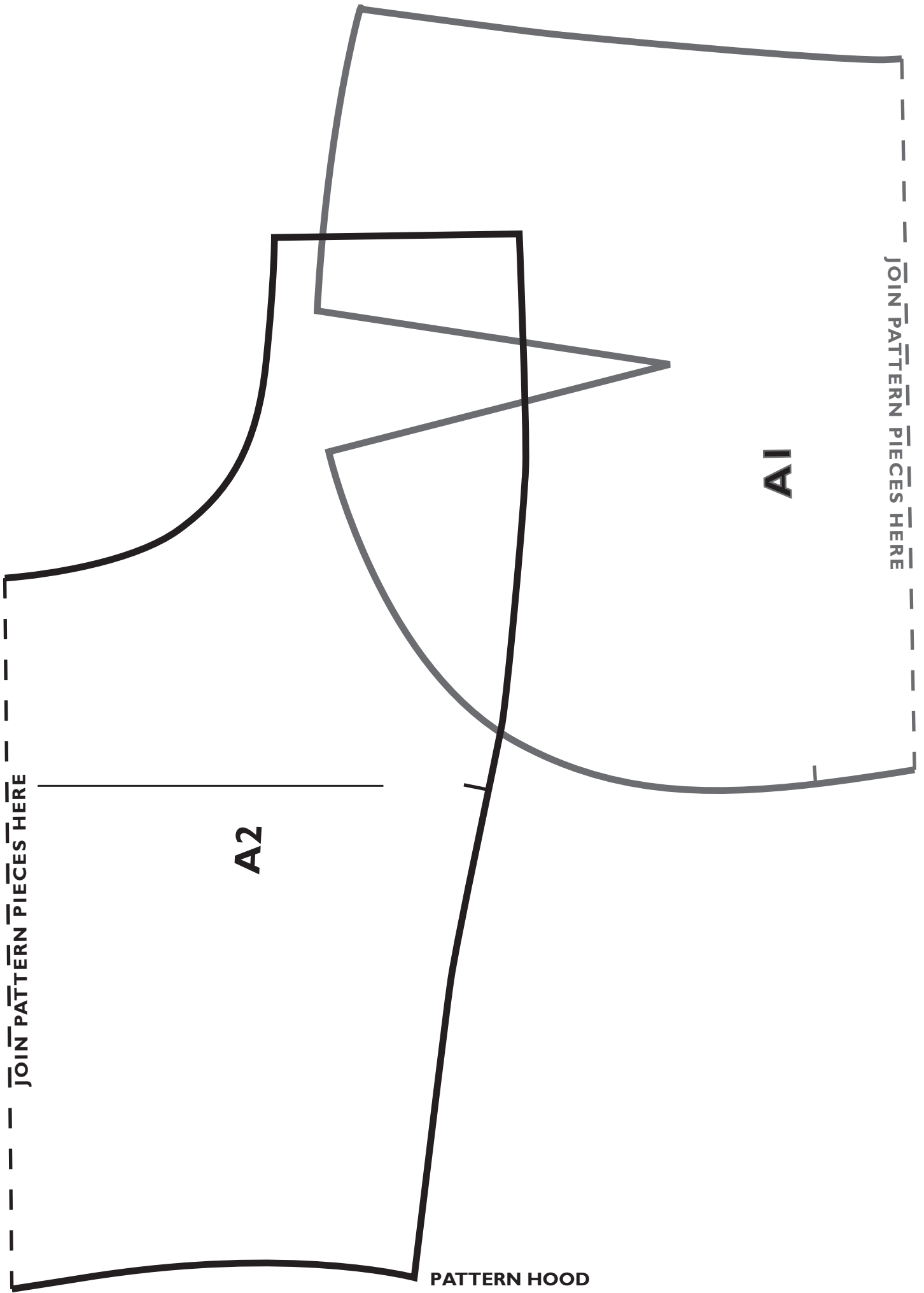
VIKING



**PATTERN CLAWS**



**PATTERN GLOWS**



JOIN PATTERN PIECES HERE

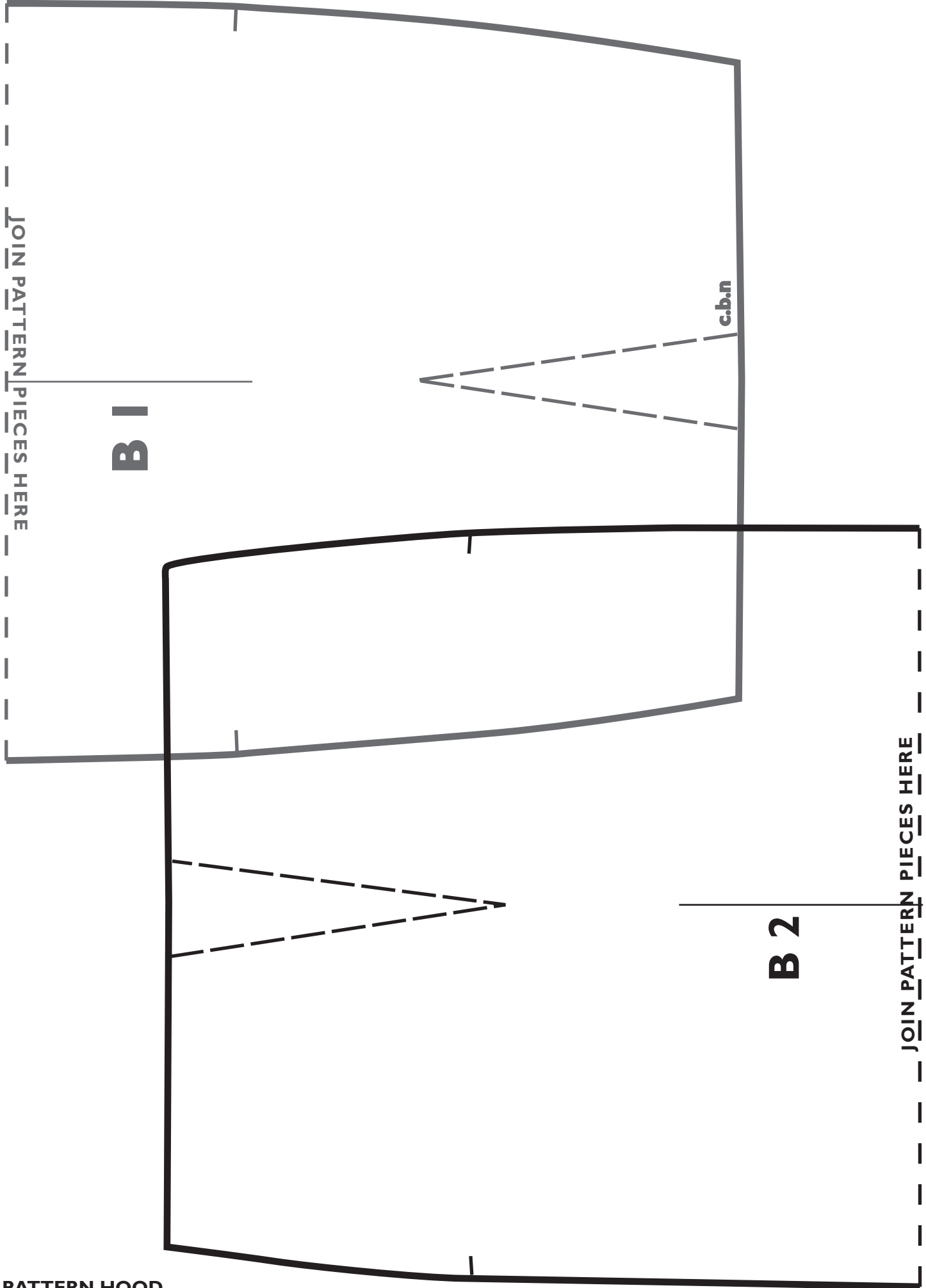
A2

PATTERN HOOD

A1

JOIN PATTERN PIECES HERE

PATTERN HOOD



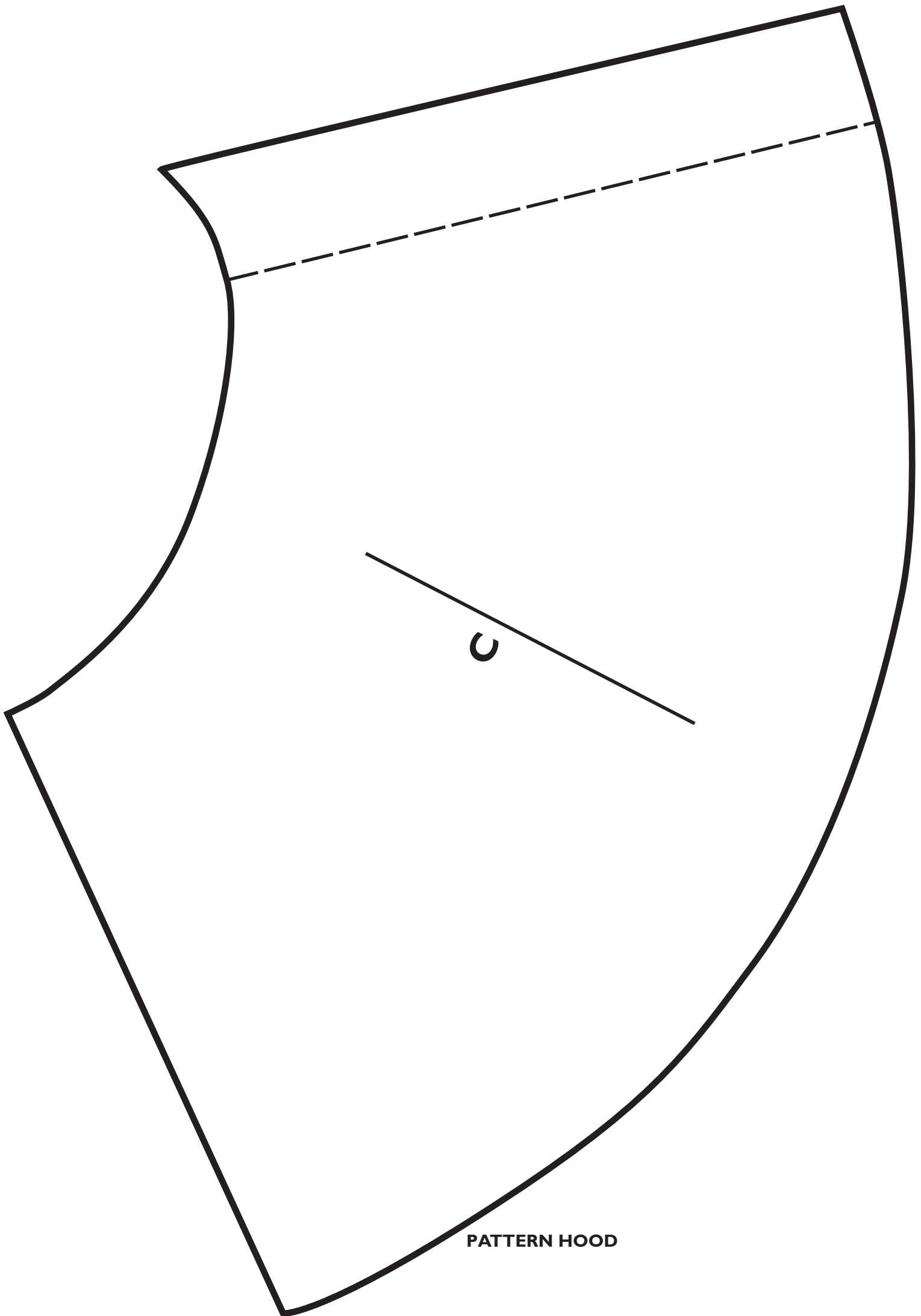
**B 1**

**B 2**

c.b.n

JOIN PATTERN PIECES HERE

JOIN PATTERN PIECES HERE



**PATTERN HOOD**

