

Red Dress with Embroideries



Sewing Supplies

- Husqvarna Viking Designer I
- Husqvarna Viking Customizing Plus software program
- Thai silk fabric according to pattern
- Organza for skirt pieces according to pattern pieces for skirt
- Sewing thread
- Sulky 40 wt. Embroidery thread
- Husqvarna Viking Tear A-Way™ stabilizer
- Husqvarna Viking disk 125, Funky Flowers by Margit Grim
- Burda pattern 8718

CUT

Cut all pieces according to pattern instructions in thai silk fabric except for the center front piece where the embroideries should be placed. Mark out the front piece on a piece of thai silk fabric so you will have enough fabric outside the front piece for hooping. Cut the pieces for the skirt in both thai silk and organza. Illustration A.

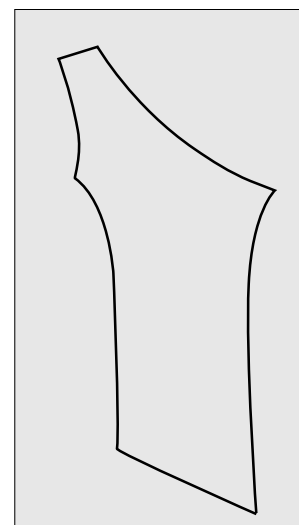


Illustration A.

EMBROIDER

Open Customizing Plus. Go into preferences and select the mega hoop in a vertical position. Open design 4 on menu 1 from disk 125. Resize the height and the width of the design to 10 % smaller. Mirror image side to side. Copy and paste so you have three designs. Combine and rotate them within the hoop as illustrated, so they will follow the curved line over the chest as you embroider. Combine design and Print Preview. Use the embroidery template and the printout to see how to place the design diagonally over the dress. Hoop the front piece with tear away stabilizer underneath. Embroider the designs in matching colors to the fabric. Illustration B.

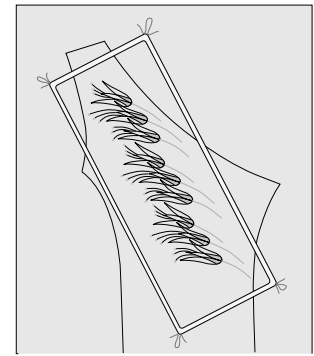


Illustration B.

Cut out the front piece according to the pattern. Sew the dress according to the pattern instructions except for the skirt that is sewn in both organza and thai silk as two separate skirts. Place the organza skirt over the thai silk, pin and sew the skirts to the body.

Press under 1/4" (6 mm) on the lower edge of the organza skirt and finish with a narrow zig zag close to the folded edge. Trim excess seam allowance on the wrong side, close to the seam. Illustration C.

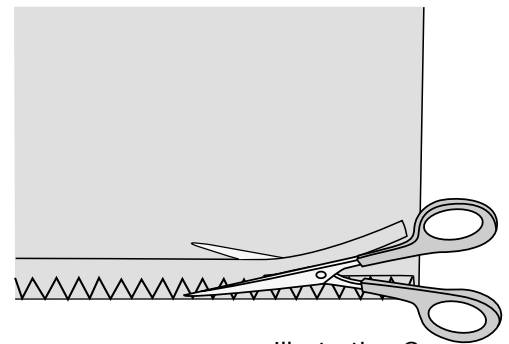


Illustration C.



 **Husqvarna**

VIKING