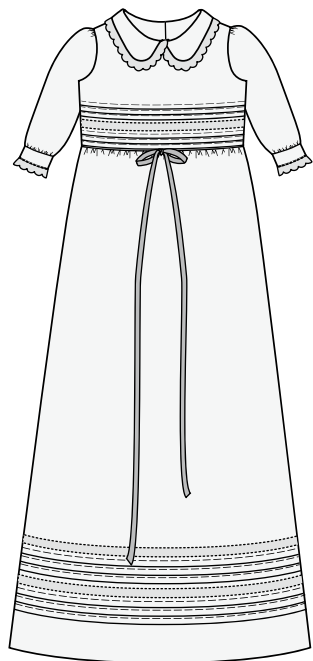


Christening Dress



Sapphire 850/830
EXCLUSIVE SENSOR SYSTEM



Christening Dress was created with Burda pattern 9804, view A with heirloom lace details added to the sleeves and collar. The underskirt was omitted.

Sewing Supplies

- Husqvarna Viking Sewing machine
- Huskylock overlock machine (optional)
- Burda pattern 9804 view A
- White cotton fabric, (for yardage see pattern)
- 2 1/4 yards (2 m) of 3/8" (1 cm) wide white satin ribbon
- 2 1/4 yards (2 m) of 1/4" (6 mm) wide pink satin ribbon
- 1 1/4 yards (1,10 m) of 3/4" (2 cm) wide white edging lace
- 3 3/4 yards (3,30 m) of 5/8" (1,5 cm) wide white insertion lace
- 1/2 yard (38 cm) White bias binding
- 4 small white buttons
- Fusible Interfacing
- Tear-A-Way™ Stabilizer

Husqvarna Viking Accessories

- Edge/Joining Foot (412 79 68-45)
- Clear B Edge Joining Foot (413 05 84-45)
- Edge Stitching Foot (412 79 67-45)

• Sensor One-step Buttonhole Foot (412 81 51-01)

You can find these and many other accessories in the Husqvarna Viking Accessory User's Guide or on our website www.husqvarnaviking.com, for purchase at your nearest Husqvarna Viking Dealer.

Seam allowance: Refer to sewing instructions in the pattern

Cut out the Christening Dress pattern View A, in correct size.

From white cotton fabric:

- 1 basic piece—this piece will be embellished with tucks and lace then cut into front
- 1 front piece—this will be cut from basic piece after embellishment is complete
- 2 back pieces
- 4 collar pieces
- 1 front skirt piece
- 1 back skirt piece
- 2 sleeve pieces
- 4 sleeve bands

From 5/8" (1,5 cm) wide white insertion lace:

- 1 piece 12" (30 cm)
- 2 pieces 59" (150 cm)

From 3/4" (2 cm) wide white edging lace:

- 2 pieces 8" (20 cm)
- 2 pieces 12" (30 cm) of

Sewing

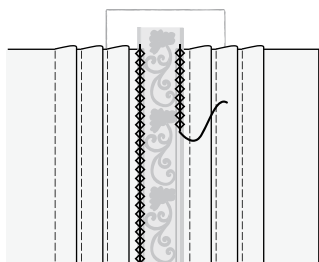
Overcast all edges except collar piece and basic piece with a 3-step zigzag on your Husqvarna Viking Sewing Machine or Husky-

lock. On Husqvarna Viking Sapphire 850 or 830, touch Lightweight woven and Overcast on your Sewing Advisor.

Select Straight Stitch (Touch Seam on Sewing Advisor) and stitch folded tucks on the basic piece as shown in the pattern instructions. For perfect folded tucks, snap on the Clear B Edge Stitching Foot, adjust needle position and sew 3 parallel rows. Sew another 3 parallel rows but leave 3/8" (1 cm) as shown on the pattern. Press all tucks in one direction.

Lace Insertion:

Cut the basic piece in two between the two sets of tucks. Snap on the Edge/Joining Foot. Select the entredeux stitch (Sapphire 850 Menu 3, Stitch 32, Sapphire 830 Menu 3, Stitch 29). Place stabilizer underneath and place the cut edge of the fabric against one side of the guide/flange on the foot and place the 12" (30 cm) piece of 5/8" (1,5 cm) wide insertion lace on the other side of the guide/flange of the foot and sew. Keep fabric and lace against the guide/flange and the entredeux stitch will join the lace to the fabric. Repeat for the other side of the lace.



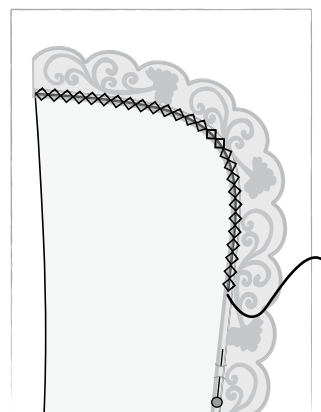
Remove the stabilizer.

Put the pattern for the front piece onto the embellished basic piece and cut out the front. Finish edges with a 3-step zigzag (touch Overcast on the Sewing Advisor) around all edges, except the neckline.

Pin the front and back shoulder seams right sides together. Select straight stitch (Seam on the Sewing Advisor), snap on presser foot A and sew the shoulder seams. Press seams open.

Collar:

See pattern instructions for interfacing and stitching collar pieces. Turn right side out and press. To stitch lace to collar edge, snap on the Clear B Edge/Joining Foot. Select the entredeux stitch (Sapphire 850 Menu 3, Stitch 32, Sapphire 830, Menu 3 Stitch 29). Place the collar right side up with stabilizer underneath place the collar and the edging lace against the flange/guide on the foot and sew the lace to the collar edge. Repeat for the other collar piece.



Follow pattern instructions to put on collar and finish edge and back facing extensions.

Snap on presser foot A and stitch bodice side seams as directed in pattern.

Sleeves:

The sleeves will be set in to the bodice according to the pattern instructions but first you have to add the lace embellishment; Interface one piece of the band. Sew the 3/4" (2 cm) wide edging lace at the lower edge on the right side of the interfaced sleeve band matching raw edges. Put the other sleeve band piece right side together and sew at the lower edge. Trim the seam allowance to 1/4" (5 mm). Put the short edges together and sew. Trim the seam allowance to 1/4" (5 mm). Turn right side out and press the lace down and the sleeve band up.

Snap on the Clear B Edge/Joining Foot. Select the entredeux stitch (Sapphire 850 Menu 3, Stitch 32, Sapphire 830, Menu 3 Stitch 29) place stabilizer under the sleeve band and stitch be-

tween the lace and the edge of the band.

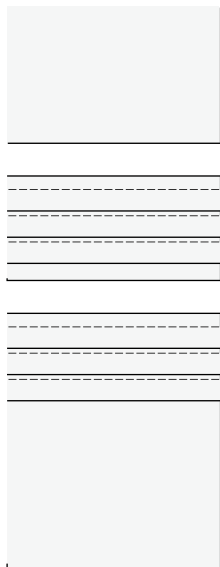
Continue to follow the pattern instructions for the sleeves.

skirt:

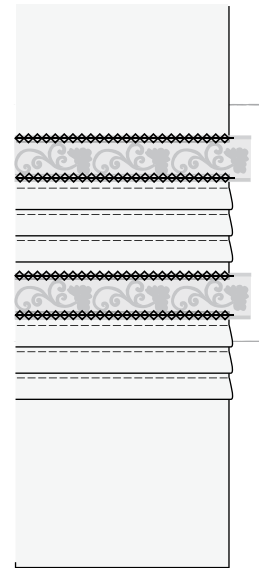
It is easier to create the tucks and insert the lace on a flat piece so sew only the right side seam of the front piece and back piece of the skirt, right sides together. You will sew the last side seam later.

Follow pattern instructions to stitch the folded tucks on the skirt pieces. For perfect folded tucks, snap on the Edge Stitching Foot. Adjust needle position and sew 3 parallel rows with a straight stitch (touch Seam on the Sewing Advisor). Sew another 3 parallel rows but leave 3/8" (1 cm) in between. Press all tucks in one direction.

To insert lace between the folded tucks on the skirt, cut the skirt piece in two between the two groups of folded tucks and 3/8" (1 cm) above the upper group of folded tucks.



Snap on the Clear B Edge/Joining Foot. Select the entredeux stitch (Sapphire 850 Menu 3, Stitch 32, Sapphire 830 Menu 3, Stitch 29). Place stabilizer underneath and place the cut edge of the fabric against one side of the guide/flange on the foot and place the insertion lace on the other side of the guide/flange of the foot and sew. Keep fabric and lace against the guide/flange and the entredeux stitch will join the lace to the fabric. Repeat for the other side of the lace. Then insert the other piece of lace above the folded tucks.



Sew the left side seam of the skirt right sides together. Trim the insert laces.

Follow the sewing instructions in the pattern to finish the Christening Dress.

For perfect buttonholes use the Sensor One-step Buttonhole Foot and select Buttonhole on the Sewing Advisor and follow the recommendations on the Graphic Display.

Tie the pink and white ribbon together with a bow at the center front and attach it to the dress at the front piece with a safety pin so it can be removed for washing.