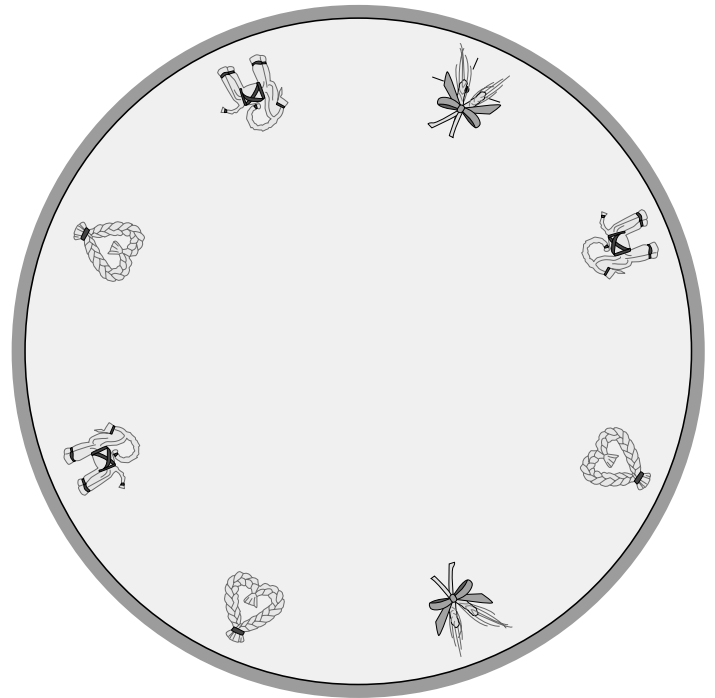


Christmas Tree Carpet



Sewing supplies

- Husqvarna Viking Sewing/Embroidery machine
- Linen fabric 40" x 40" (1 x 1 m.)
- (3.40 m) red, packaged narrow double fold bias binding 1" (24 mm)
- Red Sewing thread
- Sulky 40 wt. Rayon Embroidery Thread for the embroideries
- Card/Disk/d-Card 38, Christmas by Natalie Sorenson
- 1/4" (6 mm) Bias Binder (411 85 04-45)
- Husqvarna Viking Tear A-Way' stabilizer
- Pictogram pen

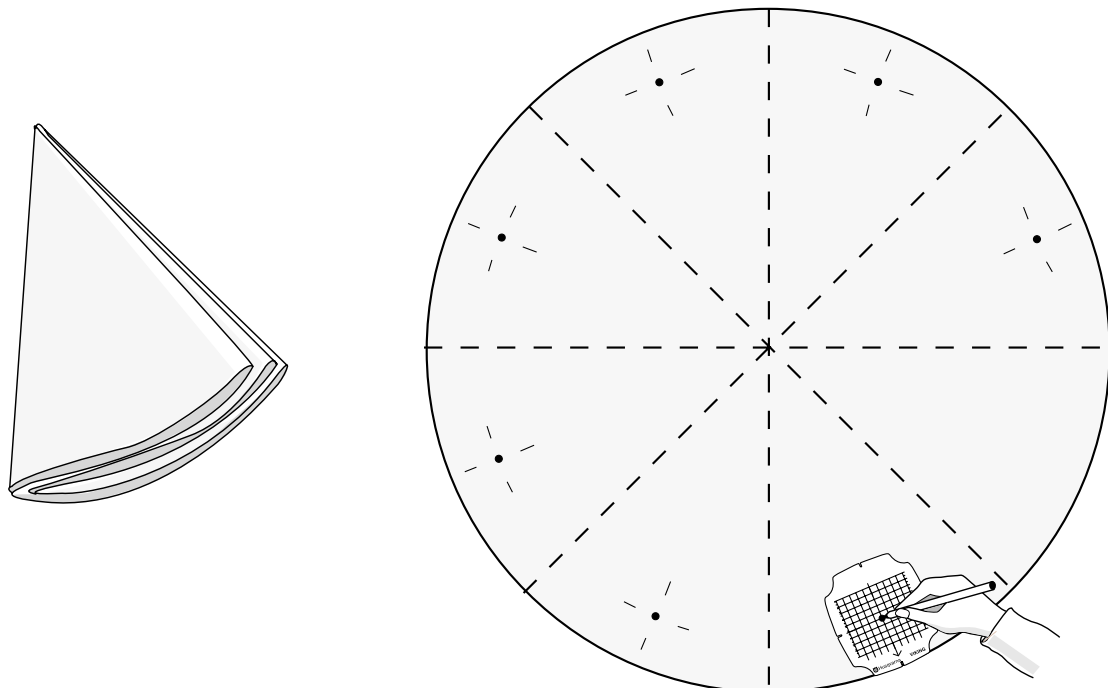


Cut

Cut a circle from linen fabric measuring 40" (1 m.) in diameter.

Optional Embroidery

Fold the circle in half, and then fold it again twice to make eight sections. Finger press lightly to mark the folds. Unfold the circle and mark the starting point of the 8 embroideries with a pictogram pen and the positioning template, 4" (10 cm) from the outer edge, in all eight sections. Use the standard hoop.

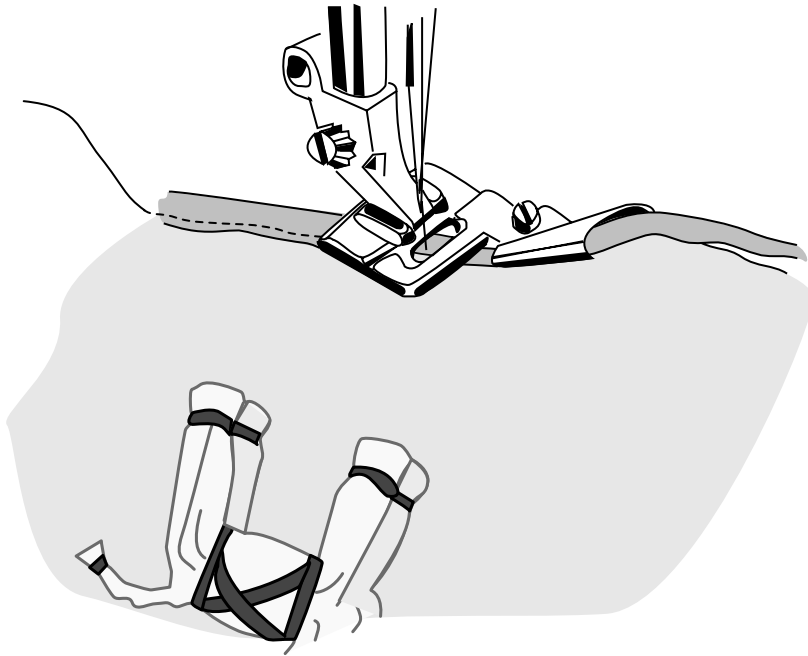


Set up your Husqvarna Viking Embroidery machine for embroidery and thread it with embroidery thread. Hoop the fabric with stabilizer and embroider the Christmas designs, one by one, varying design 31 and 32 from Menu 1, and design 31 from Menu 2, around the carpet.

Sew

Bind the edges around the carpet with bias binding. Rethread with red Sewing thread. Snap on the Bias Binder and cut the end of the bias tape to a point. Insert the bias tape from the outside of the funnel guide, into the slot that matches its width, and pull it down under the foot.

Place the edge of the carpet into the groove on the left side of the funnel guide. Adjust needle position as needed and bias bind the carpet all around the edge.



Press your carpet and place it under the Christmas tree!