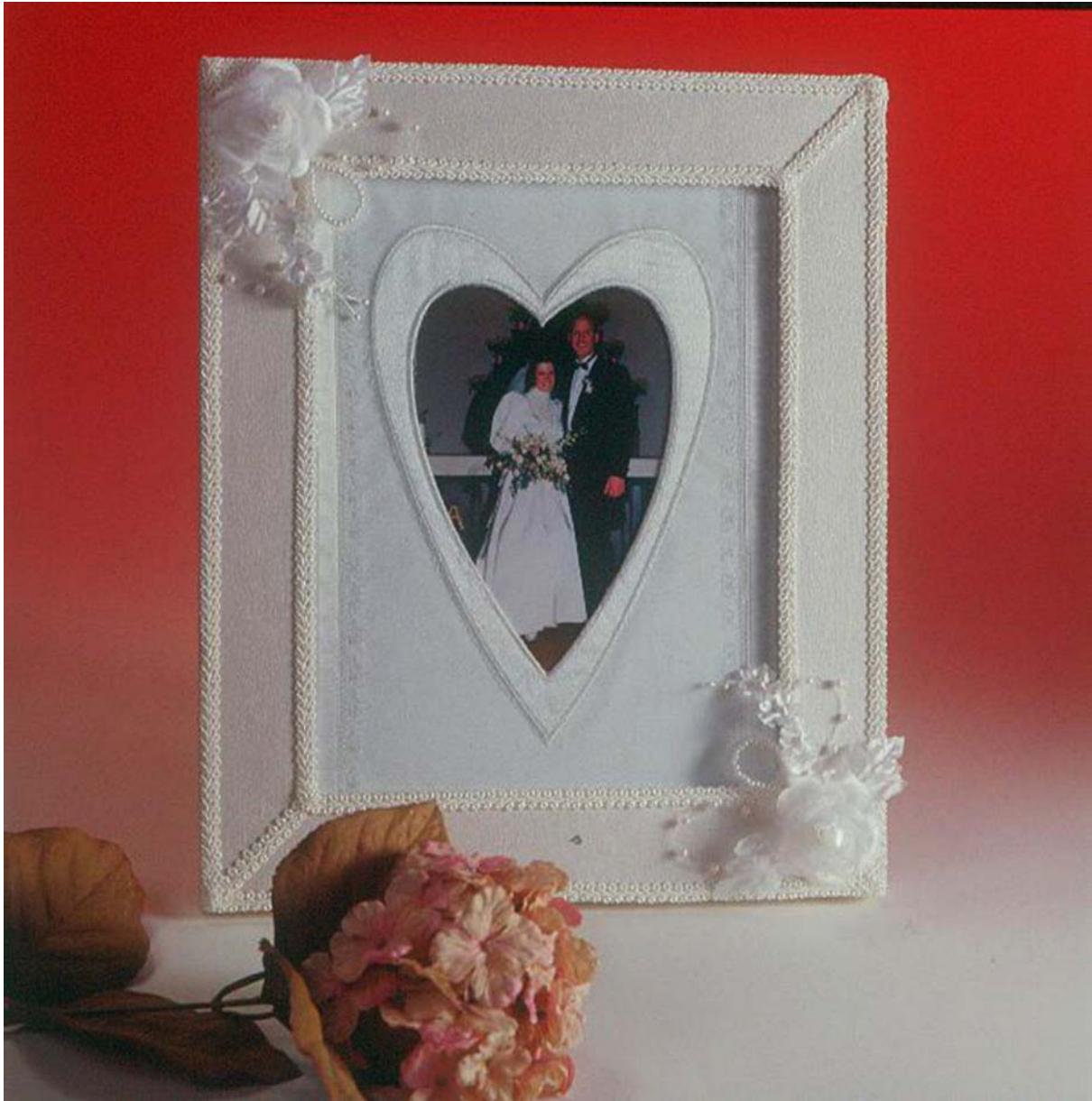


HEART-FELT FRAME



Save your favorite wedding photo in this lovely hand-made frame and embroidered mat. It's the perfect keepsake for such a special occasion!

Supplies

(Based on 8" x 10" frame)

Purchased wooden picture frame (white or unfinished)

1/4 yard of water-stain stain fabric

Rayon thread

1 yard of flat edging lace

1 yard of 1/4"-wide satin ribbon

3 yards of decorative trim

Artificial flowers, beads or ribbons of choice

Tear-away stabilizer

8" x 10" piece of Puffy Foam™ from Sulky

Edge/Joining Foot

Fabri-Tac™ Permanent Adhesive

Mounting adhesive sheets from Therm O Web

Water- or air-soluble marking pen

White acrylic paint (if necessary)

Directions:

1. Cut a piece of satin the size of the cardboard that comes with the frame. Mark the center for the embroidered heart.
2. Layer the satin over the Puffy Foam and then two layers of tear-away stabilizer on the bottom; place in your embroidery hoop.
3. After transferring the designs from the CD-ROM appropriate for your embroidery sewing machine, set up your machine for embroidery. Select the Valentine Heart, Large Embroidered and stitch the design cutting away the center fabric and Puffy Foam™ when indicated.
4. Remove the tear-away stabilizer from the back
5. Pin the flat lace vertically 1/2" from each side of the heart. Straight-stitch using your Edge/Joining Foot to hold on each side.
6. Place the ribbon over the header of the lace and stitch in position along both edges. Carefully press from the wrong side but not over the heart as you will shrink the Puffy Foam™!

7. Center the heart over the picture. Tack with a dot of glue in each corner.
8. Cover the frame board with a mounting adhesive sheet and trim to fit. Carefully place the picture and fabric on top of the adhesive sheet and press to hold.
9. After painting the frame if necessary and allowing it to dry, use the Fabri-Tac™ to glue the decorative trim to the outer and inner edges of the frame. Turn under all raw edges to keep the trim from raveling.
10. Glue flowers, beads or any other adornments to the corners.
11. Place the picture in the frame and close the back. Enjoy!