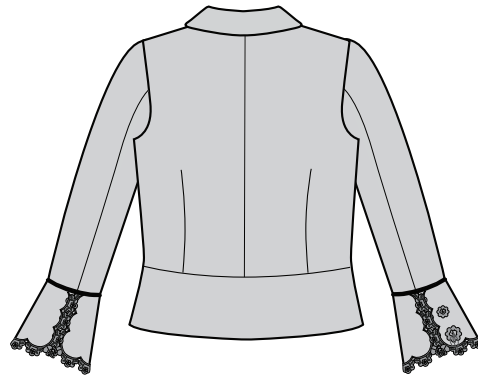


Jacket and skirt



Sapphire 850/830
EXCLUSIVE SENSOR SYSTEM



Sewing supplies

- Husqvarna Viking Sewing machine
- Burda pattern 8053 of a fitted jacket and skirt pattern
- Checked (off white/beige) wool fabric for the jacket (see pattern for amount)
- Lining for the jacket (see pattern for amount)
- 20" (50 cm) of fusible interfacing (Soft Vlieseline®)
- 2 1/3 yards (2 m) of 2 3/8" (6 cm) wide dark brown lace or cut out from lace fabric
- 1 pair of shoulder pads
- 8 flowers for decoration, Scrap of pink organza, dark brown lace and some pink embroidery yarn
- 1 yard (70 cm) of piping cord
- 7" (20 cm) Invisible zipper, dark blue
- Organza, dark blue for the skirt (see pattern for amount)
- Organza, dark blue for the belt, 9"x 69" (23 x 175 cm)
- Raw Silk fabric, dark blue for the skirt (see pattern for amount)
- Raw Silk fabric, dark blue for the belt, 1/8 yd. x 33" (12 x 87 cm)
- Lining for the skirt (see pattern for amount)
- Sewing thread

Husqvarna Viking Accessories

- Invisible Zipper Foot (412 68 70-45)

• Piping Foot (411 85 10-45)

• Clear Seam Guide Foot (413 03 48-45)

You can find these and many other accessories in the Husqvarna Viking Accessory User's Guide or on our website www.husqvarnaviking.com, for purchase at your nearest Husqvarna Viking Dealer.

Seam allowance: See pattern instructions!

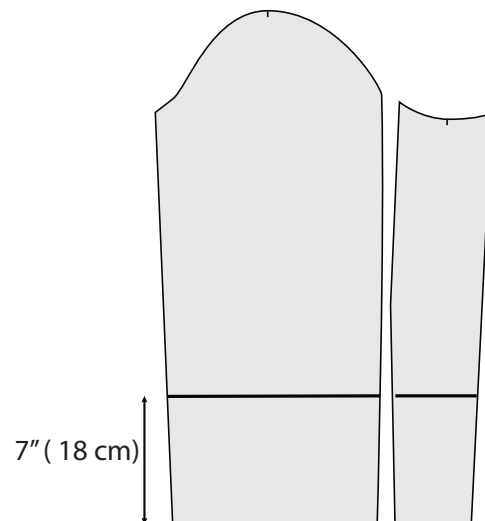
Trace and cut out the pattern for chosen size for the Jacket A and Skirt C onto pattern paper and cut out.

Continue to follow the pattern instructions.

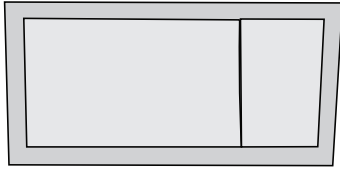
Note: We made a change on the sleeves and added a cuff. We also decorated the collar and made a belt for the skirt.

Cuff:

Cut 7" (18 cm) off the sleeve pattern pieces at the lower edge.

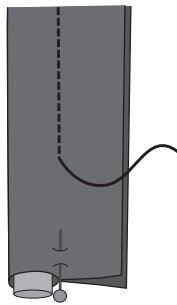


For two cuffs cut four pieces 8 1/4" x 11 3/4" (19,5 x 29,5 cm). This includes a 5/8" (1,5 cm) seam allowance on all sides.

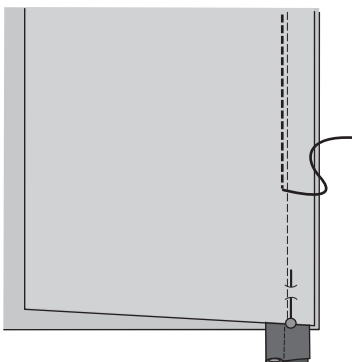


Snap on the Clear Seam Guide Foot for an even seam allowance. Sew the pieces right sides together but leave the one long edge open for turning. Trim the excess seam allowance. Turn right side out. Press. Snap on the Piping Foot. Cut a strip of organza and cover the cord to create a piping of the Organza fabric.

Cut the piping in half. Sew the piping along the lower edge of the sleeve.



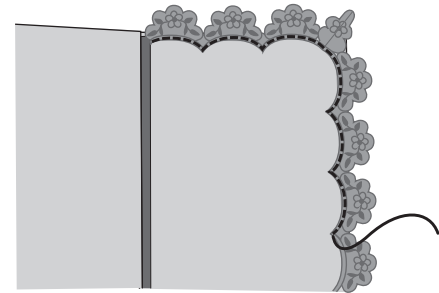
Place one side of the open edge of the cuff right sides together to the piping at the sleeve edge. Stitch in place between the cuff and sleeve. Pin the cuff facing in place and topstitch "in the ditch" of the piping seam. Continue to use the piping foot and adjust the straight stitch needle position with the width setting so the stitch falls in the piping seam line.



Tips for stitching lace:

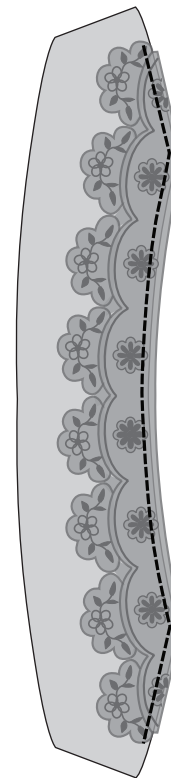
Snap on the Clear B Foot with red guidelines. Select Zig Zag stitch width 1.5 and length 1.5 to 2.0. Zig zag around the edges of the lace to appliqué in place.

Sew the lace onto the cuff with a straight stitch.



Collar:

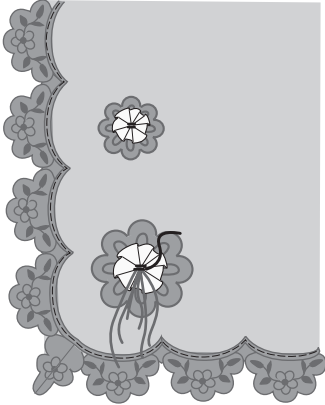
Sew the collar according to the pattern instructions. Stitch lace on the inner piece of the collar before you sew it onto the jacket.



Decorations:

Make 3 larger and 5 smaller flowers. Cut out flowers from the lace. Crease a scrap of pink Organza on top of the lace flower and sew together with a few stitches. On the larger flowers, add some pink yarn to hang down from the flower.

Decorate the left lapel and both cuffs.



Belt:

Fold the Raw Silk Fabric for the belt right sides together lengthwise. Sew with a straight stitch on one short edge and the long edge but leave one short edge open for turning.

Trim excess seam allowance. Turn right side out. Fold seam allowance for the open short edge to the inside of the belt and press. Sew the short edge together from the right side.

Put the Organza centered on the belt. Crease the Organza to fit the belt wide wise. Sew the Organza onto the belt with five straight stitches.

