

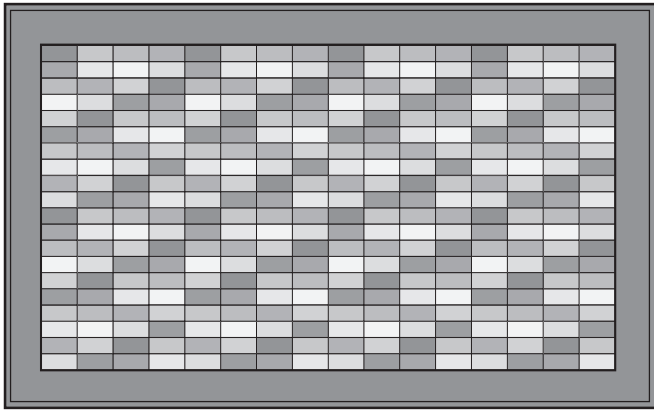
Jewel Quilt



*Approx. Size: 138cm x 225cm (55" x 90")
Sewing Level 3*



Sapphire 850/830
EXCLUSIVE SENSOR SYSTEM



Sewing Supplies

- Husqvarna Viking Sewing Machine
- 1/3 yard each of 10 different light weight wool or flannel fabrics 56" – 60" wide (30 cm x 140 cm)
- 1 1/2 yards of 60" wide (120 cm x 150 cm) brown wool or flannel fabric for border and binding
- 59" x 96" (150 cm x 240 cm) of beige cotton fabric for backing
- Batting 59" x 96" (150 cm x 240 cm)
- Safety pins
- Transparent polyester thread
- Beige Cotton thread 30 weight for quilting with decorative stitches
- Sewing Thread

Husqvarna Viking Accessories

- Pictogram Pen™ (412 08 38-48)
- OLFA® Ergonomic Rotary Cutter (415 16 42-01)
- Cutting Mat
- 1/4" Piecing Foot (412 78 55 – 45)
- Stitch in ditch foot (412 92 74 -46)
- Clear B Edge/Joining Foot (4130584-45)
- Ruler (412 66 17-01)

You will find these and many other accessories in our Husqvarna Viking Accessory User's Guide or on web site www.husqvarnaviking.com,

for purchase at your nearest Husqvarna Viking Dealer.

1/4" (6mm) seam allowance included in all measurement

Steam press the wool or flannel fabric before cutting to avoid shrinkage.

Cut

4 strips from each of ten different fabrics, 2 3/4" x 55" (7.2cm x 140cm), for blocks, using the rotary cutter and cutting mat.

Measure and cut all the strips to the same length to make sure they match together.

From brown fabric: 6 strips 5 1/8" x 59" (13.2cm x 150cm), for border. 6 strips 2 1/4" x 59" (5.5cm x 150cm), for binding.

Sew

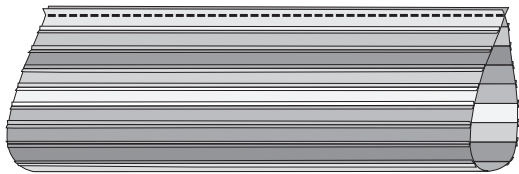
Snap on your 1/4" Piecing Foot. Select Medium Wt. Woven and Seam on your Sewing Advisor or select a straight stitch, length 2.0. Pin and stitch two strips right sides together lengthwise. Pin and stitch another strip to the long side of one of the sewn strips. Alternate different fabrics. Continue sewing as above until 20 strips are sewn into one piece. Sew the other 20 strips to make another piece as the above.



illust. 2

Fold and pin the sewing piece in half, lengthwise, right sides together, forming a tube. Sew

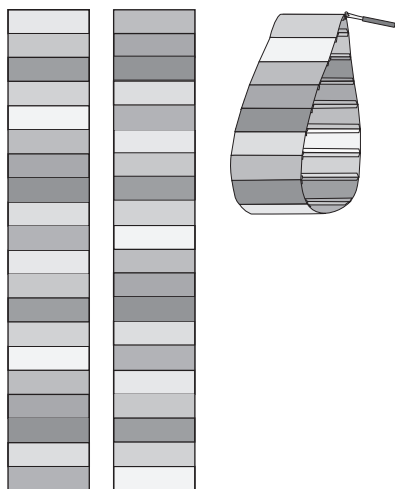
the first and last strips together. Press all seam allowance open.



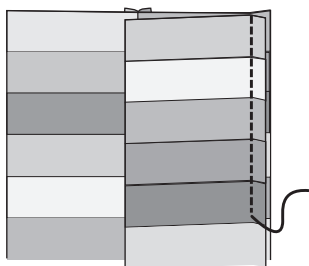
Make two

Carefully fold the tube so it is flat and straight, edges aligned. Square up one end. Cut the tube into 9 crosswise strips, 5 1/2" (14.2cm) wide. Cut the other tube into 7 strips, 5 1/2" wide (14.2 cm) for a total of 16 tube strips.

Take one tubular strip and choose one square to be at the top left corner of your quilt. Rip the seam between that square and the one above to get a long strip. Rip the seam of the next tube strip so the square you chose to be at the top left corner will now be the second square from the top. Repeat for all 16 tube strips.



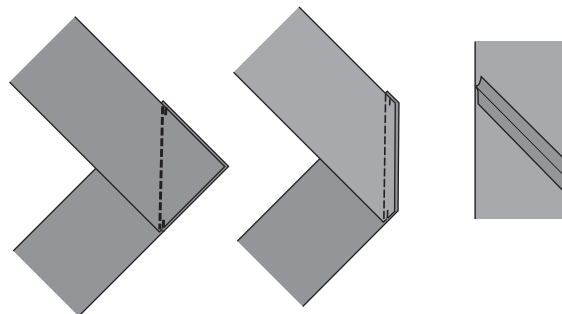
Pin the strips right sides together and sew them into one large quilt top. Match the seams carefully and press the seam allowance open to reduce bulk.



Border

Pin and sew two of the the shorter strips for the border to the top and bottom of the quilt top, right sides together.

Place the ends of two border strips right sides together across each other as shown and join them together. Trim excess fabric and press seam allowance open. Make two long border strips for the long sides of the quilt.



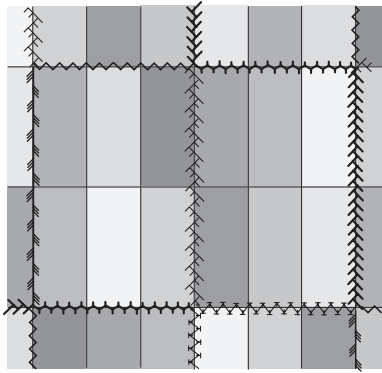
Pin the longer strips to each side of the quilt top, right sides together. Sew. Press seam allowance open.

sandwich the quilt

Place the backing on a flat surface, right side down. Center the batting on top of the backing. Center the quilt top right side up on top of the batting. Baste with safety pins approx every 4" (10 cm) all over the quilt make sure that all layers are flat. Start from the center and work your way out to the edge.

Thread with transparent polyester thread on top and sewing thread in the bobbin in a color that matches the backing fabric. If your sewing machine is equipped with a Sewing Advisor, select Woven Heavy. Snap on the stitch in the ditch foot. Stitch in the ditch of all the seams. Remove the pins when you get to them.

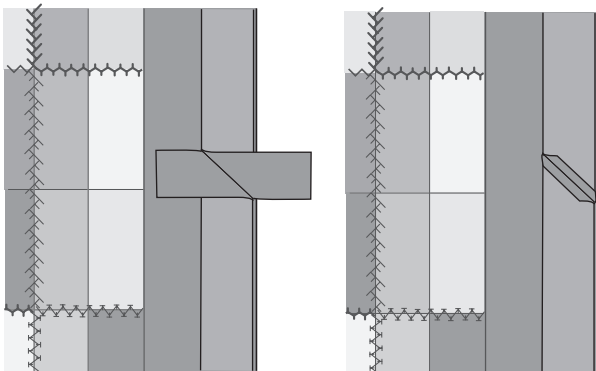
Insert a size 90 topstitch Needle. Thread with 30 weight cotton thread. Snap on the Clear B Edge Joining foot. Select a decorative quilting stitch and stitch over the sewn seams. Illustration 7



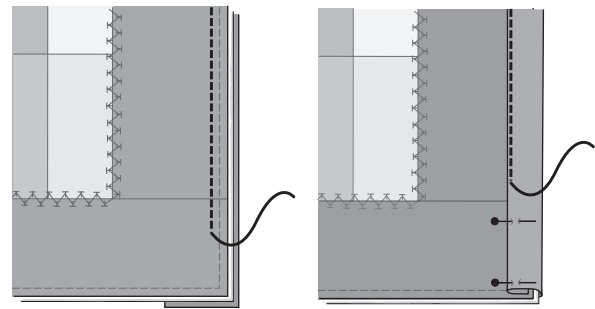
Trim excess batting and backing. Select a straight stitch and rethread with brown sewing thread. Sew around the edge of the quilt top.

Binding

Place the ends of two binding strips right sides together across each other as shown and join them together. Make two long strips for the long sides of the quilt. Trim excess fabric and press seam allowance open.



Pin the binding in place on the back of the quilt, right side together, edges aligned. Sew in place with a straight stitch. Turn over the binding to the right side, fold the seam allowance under and pin in place to the border. Sew the binding in place with a straight stitch. Trim the end of the binding at the short side.



Repeat sewing the binding along the top and bottom of the quilt but fold under the ends of binding to the wrong side on both short sides.

