

## HUSKYLOCK CLUB

### Quick Easy Pants

Diana Cedolia, Husqvarna Viking Educator.

Here's how to make the wonderful, quick one seam pants on your Huskylock! Once you've made a pair, you'll be hooked!

#### Sewing Supplies:

- Louise Cutting One Seam Pants pattern or other similar pattern
- 4 cones of good quality serger thread.
- Sewing thread and matching bobbin.
- ½" wide elastic (length should be twice the finished pant waist width plus 6").
- Hand sewing needle.
- Slim bodkin (for pulling the elastic)
- Double eyed needle.
- Clear Coverstitch Foot.
- Rotary Cutter.
- Scissors, pins & extra needles.
- Wash away marking pen and/or Chaco Liner..



#### Fabric:

- Light to medium weight woven fabric according to pattern size.
- Extra of the pants fabric for testing the seams.

#### Preparation:

- Cut the fabric out for the pants.
- Transfer any pattern markings to the pants.
- Mark the front and back.

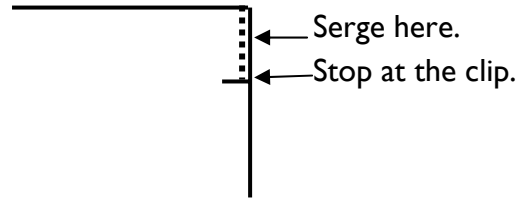
#### Huskylock Set Up

4 thread Overlock according to the Sewing Advisor.

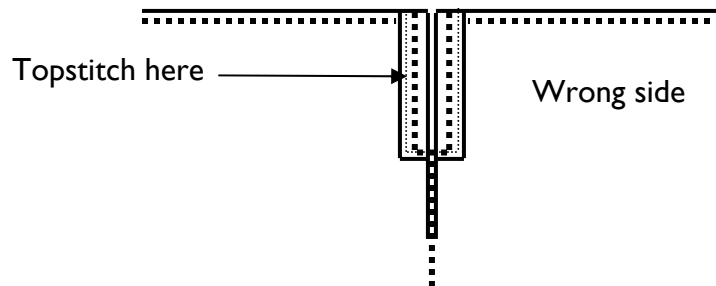
#### Construction

1. Serge finish the bottom edge of the hems.
2. Serge the inside leg seam.
3. Serge the outer leg seam if your pattern has one.

4. Measure down 1  $\frac{3}{4}$ " from the top of the waistline and clip scant  $\frac{1}{4}$ " into the seam allowance at the back only.
5. Serge finish each clipped section from the edge of the waist to where you clipped the fabric.



6. Place the two leg sections right sides together, match the inside leg seam and serge the crotch seam, begin at the center front and end when you get to the clipped section. Do not serge the clipped section.
7. Serge the top edge of the waistband. Begin and end at the center back.
8. Fold the clipped edges the width of the serging seam to the wrong side and topstitch at a sewing machine.



## Huskylock Set Up

Narrow Coverstitch according to the Sewing Advisor. Clear Coverstitch Foot.

(If you do not have a coverstitch model serger then the remaining steps must be done at a sewing machine)

1. Fold the waistband 2" to the wrong side and press.
2. Mark a line  $\frac{1}{2}$ " from the fold line on the right side of the waist all around the pants.
3. Keep the right edge of the presser foot even with this line and serge around the waistband. Start near the back seam and overlap about 1" when you get back to where you started.
4. Mark a second line  $\frac{1}{4}$ " from the folded edge and serge around the waist band again. Start and stop the same as before.
5. Pull the needle threads to the inside with a hand sewing needle and securely tie off/lock the coverstitch so it does not unravel.
6. Fold the hem edge of the pants 2" to the wrong side.
7. With right side out serge around catching the hem close to where it meets the inside edge of the pants.

8. Cut the elastic into 2 equal sections.
9. Use a bodkin to pull the elastic through the casings of the waistband.
10. Turn the pants inside out and try them on.
11. Pull on the elastic until you get a comfortable fit. Secure the elastic with pins.
12. At a sewing machine overlap the ends of the elastic and secure them.
13. Distribute the elastic evenly through the waist band by stretching the waist a few times.
14. Straight stitch in the ditch of the center front seam through the elastic to prevent it from rolling over.
15. Repeat at the sides of the waist band.

