



## DESIGNER DIAMOND™ Technique Step by Step #11 – Creating Majestic Hoop Embroidery

- The DESIGNER DIAMOND™ Sewing and Embroidery Machine should be your chosen Embroidery Machine
- Be sure your HUSQVARNA VIKING® 4D™ Software is configured with Send 1 direct USB Connection to the DESIGNER DIAMOND™ sewing and embroidery machine

1. Open 4D™ Embroidery Extra

2. Click Hoop . In Hoop Group select HUSQVARNA VIKING® DESIGNER DIAMOND™. In Hoop Size select 360mm x 350mm – DESIGNER™ Majestic Hoop. Set the Orientation to Vertical and click OK.

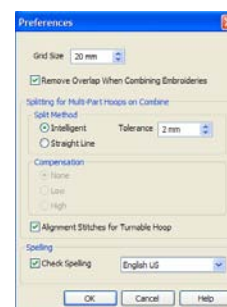


3. Click Preferences . Set the Grid Size to 20mm.

4. Leave Remove Overlap When Combining Embroideries checked.

5. Select Intelligent for Split Method and set the Tolerance to 2.

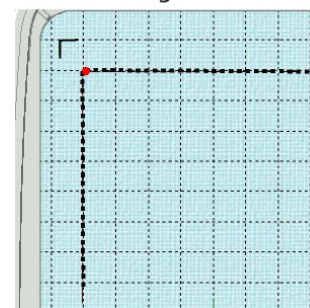
6. Place a checkmark in Alignment Stitches for Turnable Hoop then click OK.





7. Click the drop-down arrow next to Express Design Wizard and choose Fit to Rectangle .

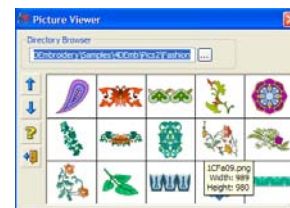
8. Starting at the first grid square in from the top left corner, click and drag a box to the lower right first grid square in from the corner. When you release the button, the Express Design Wizard will open.

Start drawing box at red dot.



9. Click Create Express Trace then click Next.

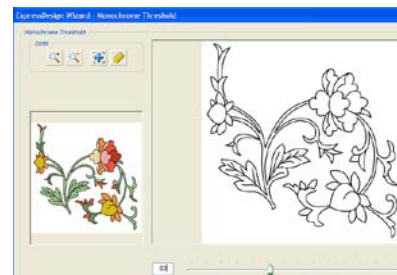
10. Click View Picture . In the Directory Browser box, use the Browse to  and find C:\4DEmbroidery\Samples\4DEmb\Pics2\Fashion then click OK.



11. Left click to select the flowers found in the 2nd row, 4th column (1CFa09.png) then click Next.

12. No need to Rotate, just click Next.

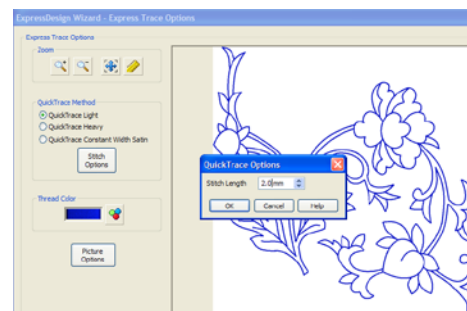
13. No need to Find Outline because this clipart has very defined lines. Click Next.



14. On the Monochrome Threshold page, slide the slider bar to the left to about 83 to remove the dark black sections of the flowers, then click Next.

15. On the Crop Picture page, the picture is automatically cropped, just click Next.

16. On the Express Trace Options page, leave Quick Trace Light selected and click Stitch Options.




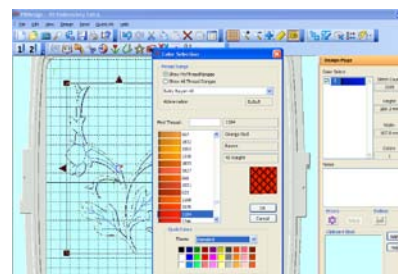
17. Change the Stitch Length to 2.0 mm then click OK.

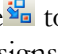
18. Click Next and the design is created. Do not be alarmed if some of the lines do not look completely visible. There are stitches connecting the entire design.

19. Click Finish.

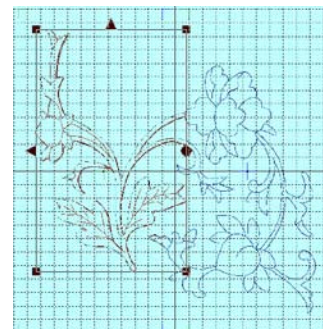
***The splitting area in the middle of the DESIGNER™ Majestic Hoop is always 30 mm. It is best to split thru as little of the embroidery design as possible.***



20. Click Preferences . Set the Grid Size to 15 mm then click OK. This will allow you to see the splitting area easily. The first dashed grid line to the left and to the right of the vertical solid center line is the edge of the 30mm splitting area.







21. Click Combine  to split the design into the two separate embroidery designs that the DESIGNER™ Majestic Hoop understands.


22. Click the blue color block under the Color Select area and choose a color in the Quick Colors at the bottom of the screen that is completely different than color number 1 (blue) then click OK. This will make it easier to see where the two sides of the design line up when you stitch it out on your DESIGNER DIAMOND™ sewing and embroidery machine.




23. Click Save As  and save the design in your C:\4DEmbroidery\MyDesigns folder as Majestic flowers.vp3 then click Save.
24. Click Send 1  to send the design directly to your DESIGNER DIAMOND™ sewing and embroidery machine as configured in 4D™ Configure.

## Embroider the Design:


1. Hoop fabric and stabilizer in the Majestic Hoop and attach the Majestic Hoop to the DESIGNER DIAMOND™ sewing and embroidery machine.
2. Touch GO to go to Embroidery Stitch-Out. .
3. Touch  (with Yes selected) to Embroider all on one side before turning.
4. Insert a size 90 Topstitch Needle. Thread with 30 wt. cotton thread or 40 wt. rayon thread on top and bobbin thread in the bobbin.
5. Touch  and embroider the first side of the design.
6. When the first side of the design is complete, you will be prompted to turn the hoop. Remove the DESIGNER™ Majestic Hoop from the embroidery arm, turn it around and slide the hoop back onto the embroidery arm. Touch  on the screen and the embroidery arm will move to adjust for the second side of the design.
7. Because you had Alignment Stitches for Turnable Hoop selected in Preferences in 4D™ Embroidery Extra, a cross has been added to the center of the overlap area. You can make sure the needle falls in the center of the cross, then press Start/Stop to begin embroidering again, or you can use Design Positioning to check that the design is lined up perfectly.

8. To position the second side of the design, touch Design Positioning 

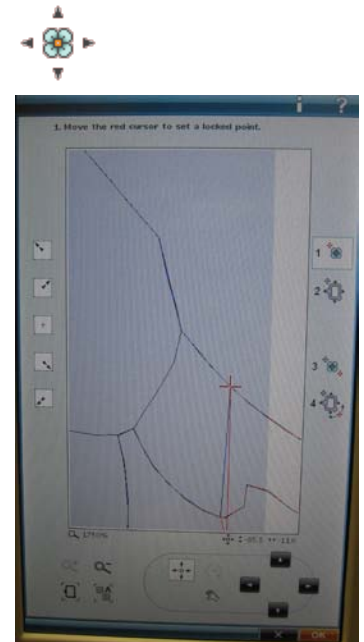
9. Touch Step 1 


10. To set the first locked point, move the red cursor to the visible upper flower section of the design by touching on the screen where

the two colors come together. Touch zoom , to zoom in on the red cursor.

11. Touch Pan  then touch the screen and drag it down until you see the red crosshair in the dark gray section of the screen.

12. Touch and hold Zoom In  all the way to the maximum percentage.



13. Touch Position  then use the Control arrows to fine tune the placement of the red crosshair to the exact point on the screen where the two sides of the design will meet. Usually you will see long jump stitches in both colors coming to one exact stitch point. That stitch point is exactly where you want your red crosshair.


14. Touch Step 2 

15. Watch your fabric and needle as you use the Control arrows to move the needle until it is above the matching locked point of the design on your fabric.



16. Lower the needle into the upper flower section of the design to check placement. Raise the needle. Adjust again using the Control arrows. Continue to adjust until the needle is exactly above the matching locked point.





17. Touch Zoom to Hoop. 

18. Touch Step 3 


19. Touch your screen to place the new red cursor on the lowest stem section of the design.

20. Touch and hold Zoom In  all the way to the maximum percentage.

21. Touch Pan  then touch the screen and drag it up until you see the red crosshair in the dark gray section of the screen as needed.


22. Touch Position  then use the Control arrows to fine tune the placement of the red crosshair to the exact point where the two sides of the design will meet. Usually you will see long jump stitches in both colors coming to one exact stitch point. That stitch point is exactly where you want your red crosshair.




23. Touch Step 4  to rotate the design into position on your fabric if necessary. Watch the needle above the fabric as you adjust the control arrows.

24. Lower the needle into the lowest stem section of the design to check placement. If the needle does not go into the exact selected



stitch point on the first half of the design, use the stylus or Control arrows to rotate the design into the exact position. When satisfied with placement, touch .

25. Touch Zoom to Hoop  to see the entire design.
26. Press **START** and embroider out the second side.