

Leopard Outfit



Sewing Supplies

- For jogging outfit Burda pattern 3689
- Shoes Burda pattern 9963
- Leopard patterned fabric:
 - For jogging outfit according to pattern instructions + approx 1 2/3 yd (1.5 m) for hood, tail, gloves and shoes
 - Scraps of leather for claws
 - Glue
 - Sewing thread, black
 - Steelwire for ears
 - Fiberfill for tail
 - 4" (10 cm) Velcro for hood and tail
 - Elastic for gloves and shoes
- Optional:
 - Fasturn (412 55 08-01)

JOGGING OUTFIT

CUT & SEW

Cut and sew the jogging outfit according to the pattern instructions.

CLAWS

Cut the claws according to the pattern. Fold the pieces as illustrated with a little glue and stitch a straight stitch through the layers. Sew 10 claws for the gloves and 8 claws for the shoes. (Illustration A).

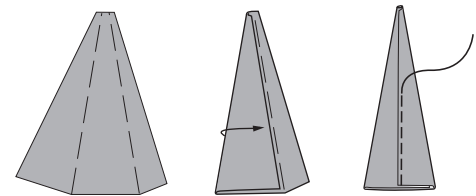


Illustration A

GLOVES

Print out the pdf-file with the pattern for the "hand-paw". Cut 4 pieces for a pair of gloves with 3/8" (1 cm) seam allowance. Snap on presser foot B. Place the claws on the right side of two pieces. With a three step zig zag, stitch the claws in place. (Illustration B).

Place the back piece with the front piece right sides together. Select straight stitch. With presser foot A, stitch around the sides. Cut down seam allowance to 1/8" (3 mm).

Measure an elastic band around the wrist of the child. (Not too tightly). With presser foot B and three step zig zag, stitch the elastic band to the seam allowance of the glove. Overlap the elastic ends. Fold the seam allowance and elastic to the wrong side and stitch with straight stitch a 5/8" (1 cm) hem. Turn gloves right side out.

Sew with straight stitch between the claws to mark the toes of the paw. (Illustration C).

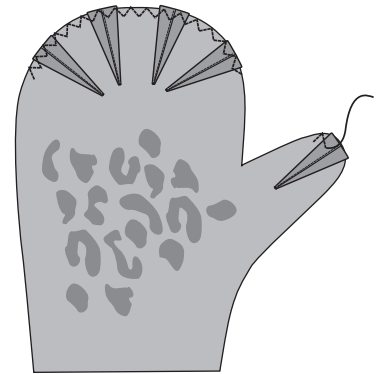


Illustration B

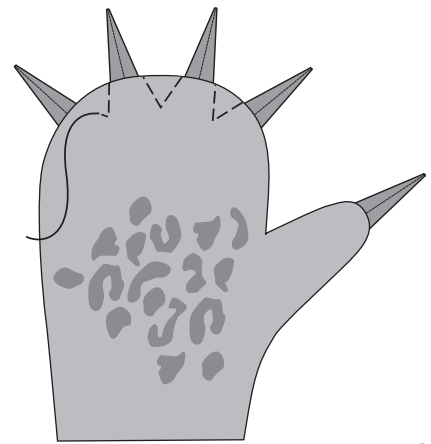


Illustration C

SHOES

CUT

Cut the pieces for the shoes after model C and instructions on the pattern.

SEW

Sew the shoes according to pattern instructions but stitch the 4 claws on each sole as you did with the gloves before you stitch the sole to the leg part of the shoe.

TAIL

CUT

Seam allowance included with 1/4" (6 mm). Cut one long strip for tail, 1/8 yd x 26" (13 x 65 cm). Measure the waist of the child and cut two 1 1/2" (4 cm) wide strips in this length + 4" (10 cm).

SEW

Snap on presser foot A and select straight stitch. Fold the strip for the tail lengthwise, right sides together. Stitch along the side and round off as you sew the end for a rounded tip of the tail. Turn right side out with a Fasturn. Fill the opening with fiberfill to make a nice leopard tail.

Place the waist strips right sides together. Stitch along the sides and an edge leaving a 2" (5 cm) opening for the tail centered along the side. Turn right side out. Insert the tail and stitch in place. Snap on presser foot D or the optional Edge/Joining Foot. With right needle position straight stitch, topstitch the sides of the waist band and the openings closed. Stitch a 2" (5 cm) piece of velcro to the ends to close the waist band. (Illustration D).

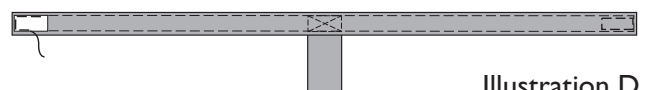
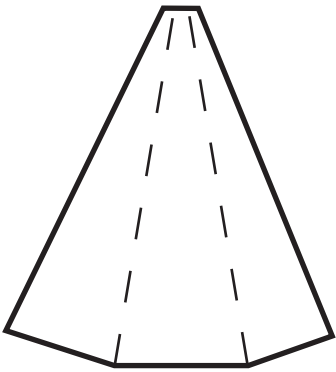
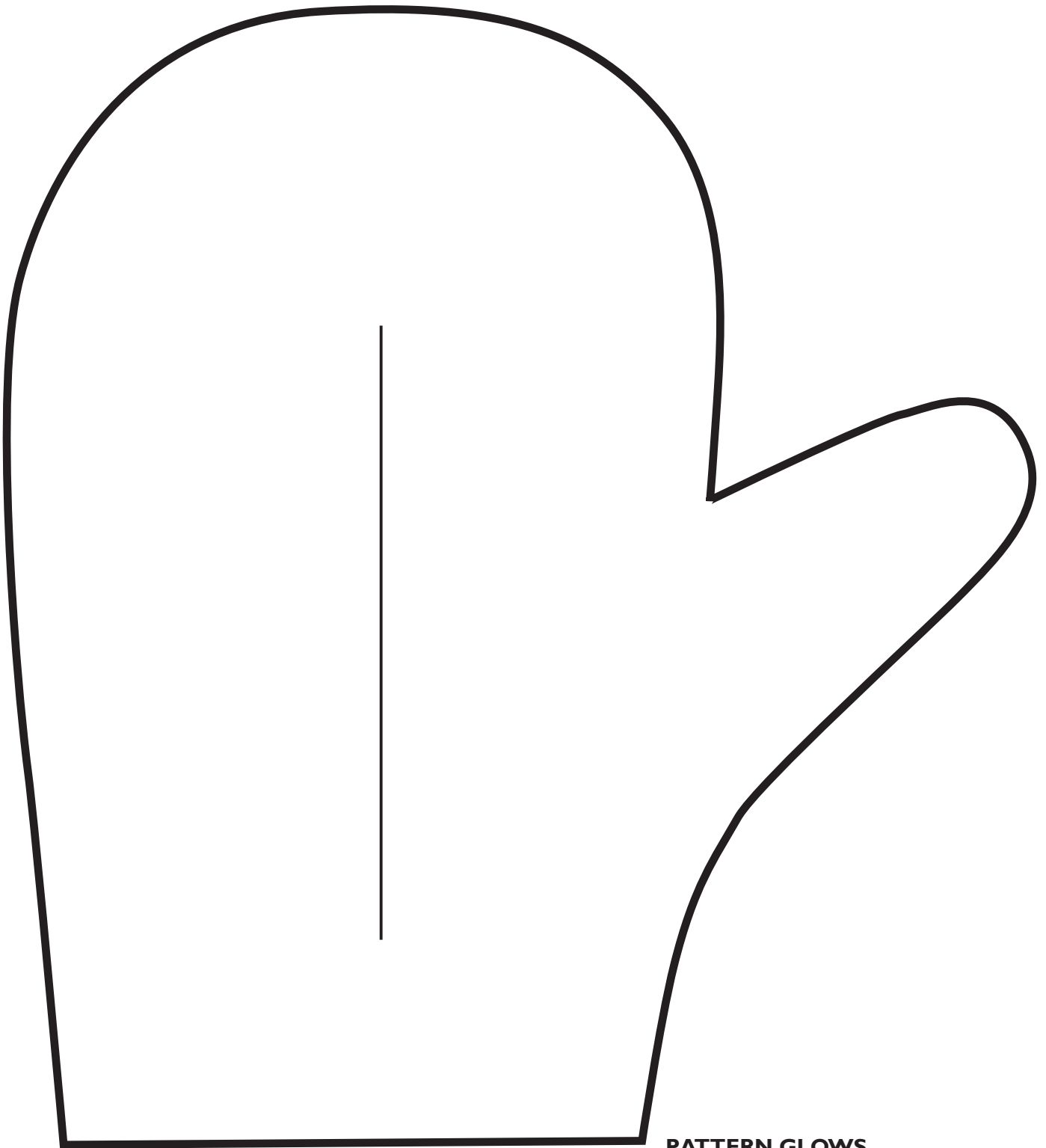


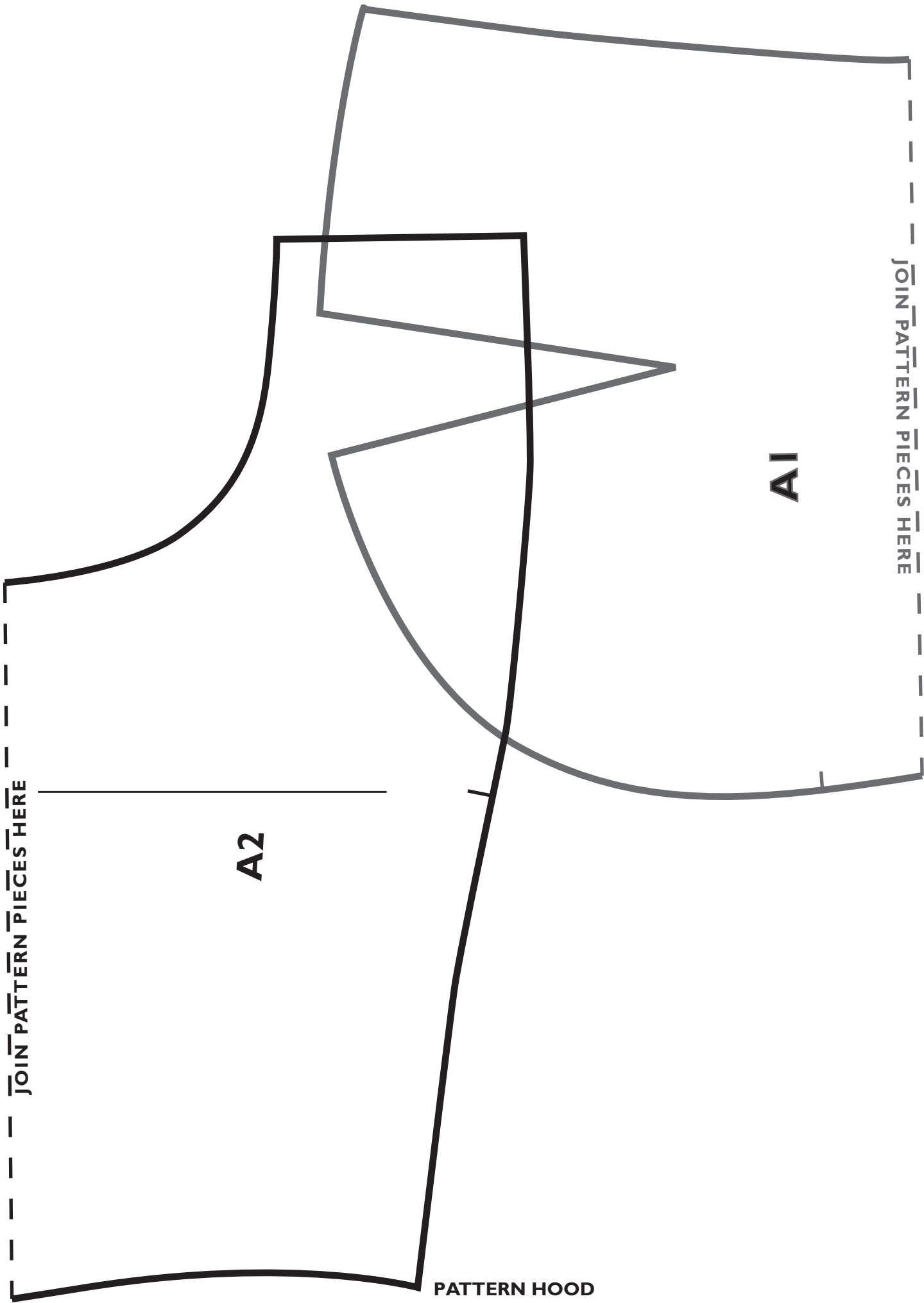
Illustration D



PATTERN CLAWS



PATTERN GLOWS



JOIN PATTERN PIECES HERE

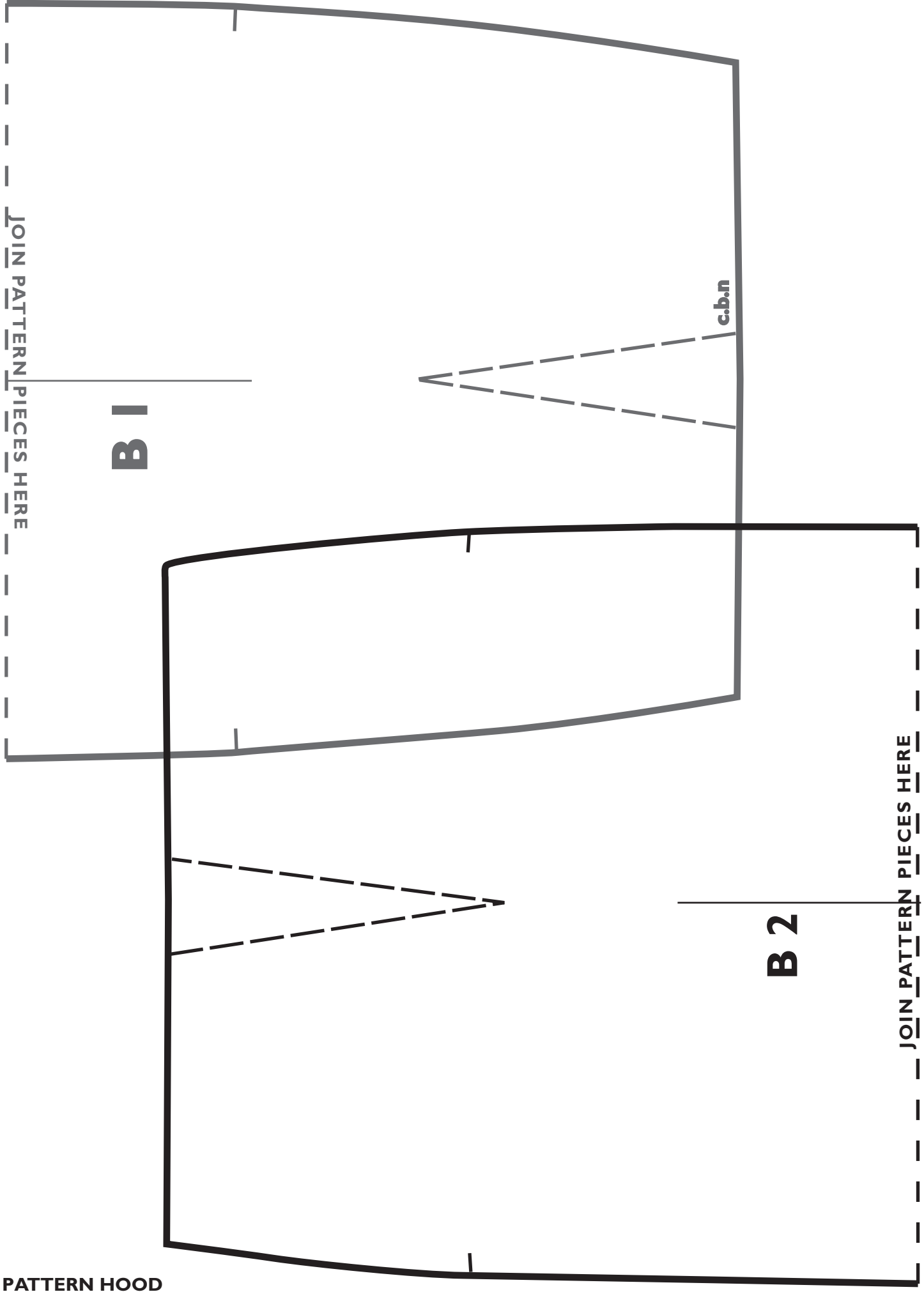
A2

PATTERN HOOD

A1

JOIN PATTERN PIECES HERE

PATTERN HOOD



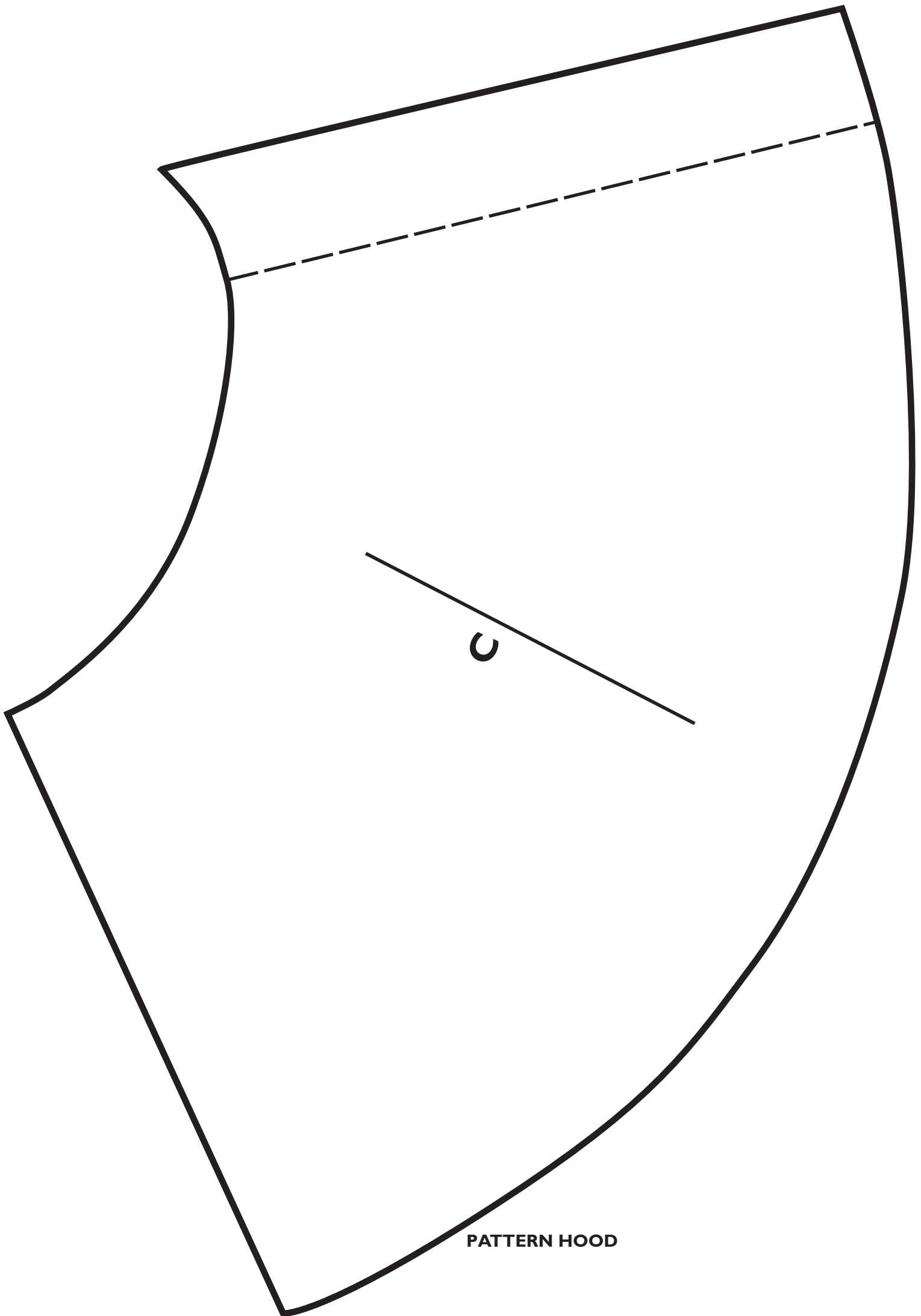
JOIN PATTERN PIECES HERE

B 1

c.b.n

JOIN PATTERN PIECES HERE

B 2



PATTERN HOOD

