


Viking Husqvarna Embroidery Card #13 Diamond Monograms

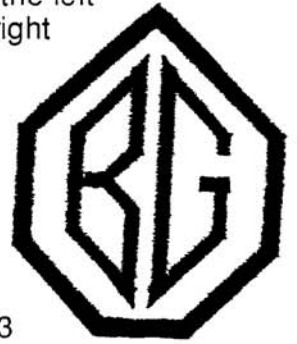
Viking Husqvarna Embroidery Card #13 embroiders beautiful two (2) and three (3) letter monograms. The card has three menus. Menu number one (1) is for the letters on the left side of the monogram. Menu number two (2) is for the letters in the center, and menu number three (3) is for the letters on the right side of the monogram.

To select a menu, touch number 35 on the Companion Cassette. Consult the upper right corner of the ProgramDisplay® window to confirm your selection as follows: To stitch the monogram below simply select 13.1:23 (card 13, menu 1, design number 23) then touch "RUN" and sew the "V". Select 13.2:24 (card 13, menu 2, design number 24) then touch "RUN" and sew the "W". Select 13.3:19 (card 13, menu 3, design number 19), then touch "RUN" and sew the "S".

Traditionally, the letter for the last name is placed in the center of a three letter monogram.



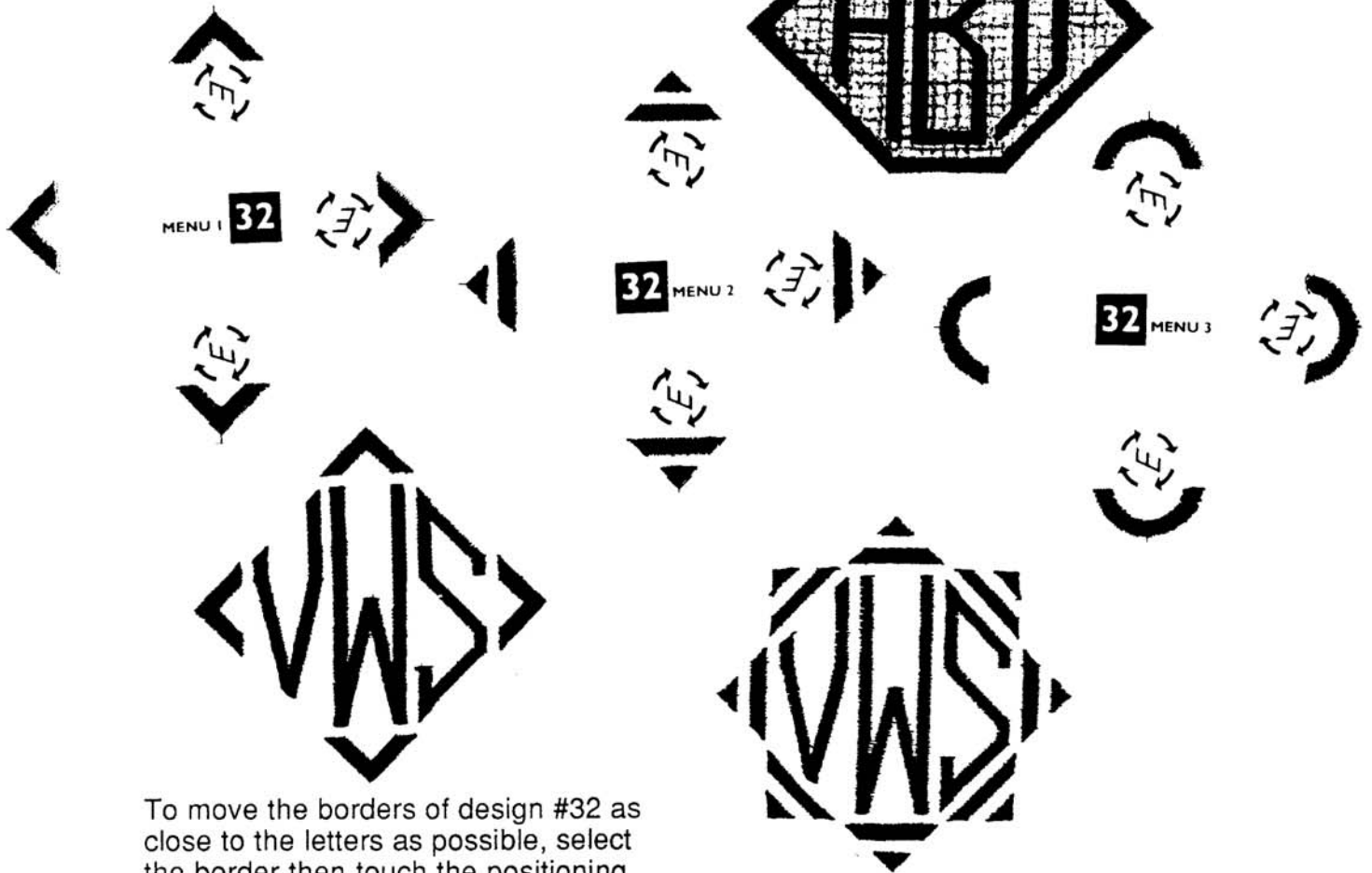
To stitch two letter monograms, use menu one and three. The letter on the left is from menu one and moved all the way to the right. The letter on the right is from menu three and moved all the way to the left. The positioning arrows  move the letters toward the center.



Sew smaller monograms by reducing in size simply by adjusting the stitch length and stitch width from 4.0 to the smallest of 2.5. Reduce all letters an equal amount for balanced monograms.

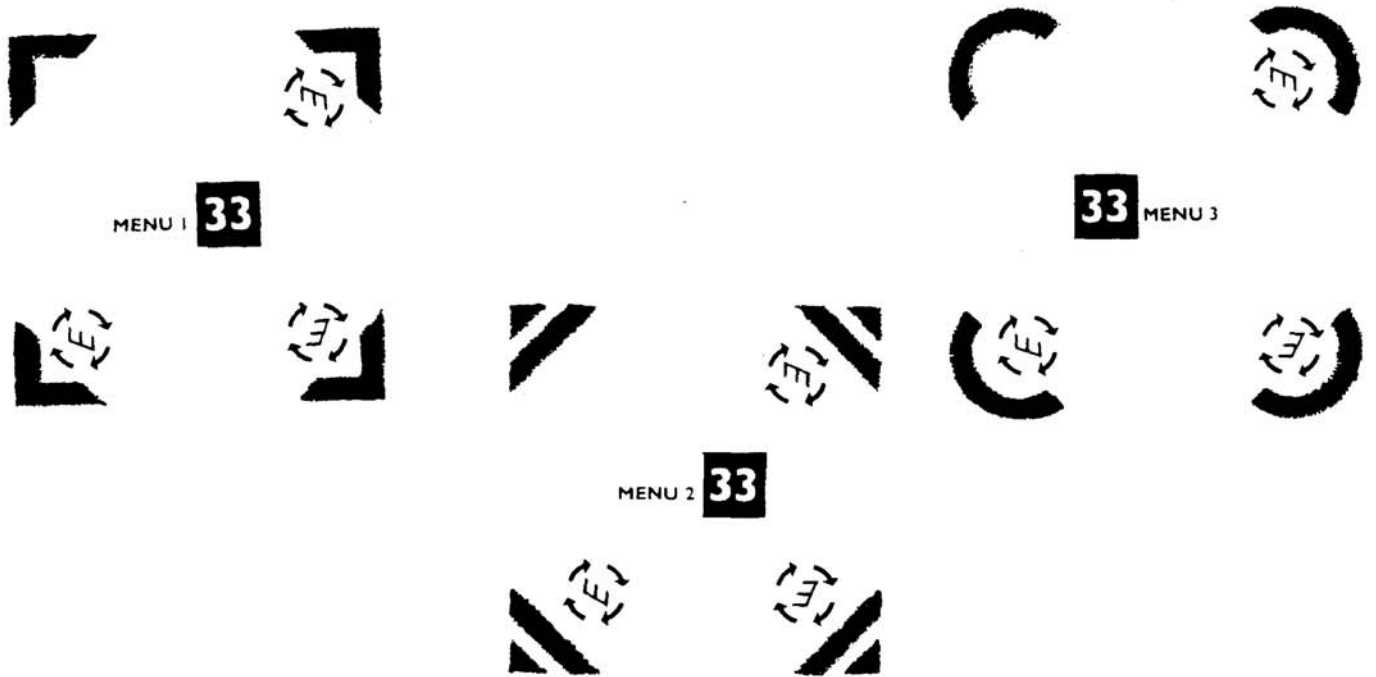
Design number 31 in all three menus is satin applique (crest) frames. Menu 1 and 2 are to frame and enhance three monograms and menu 3 is to frame and enhance two monograms. All frames are programmed for appliqué, meaning they sew a straight stitch, stop for trimming, then the satin stitch. First stitch the applique or frame then the letters.

(Note: This page copied at 64% of original size.)



To move the borders of design #32 as close to the letters as possible, select the border then touch the positioning arrow to move it. For the second, third and fourth ones, rotate the design.

Combination Border:
32:2 and 33:2



MENU 1 **33**

33 MENU 3

MENU 2 **33**

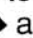


(Note: This page copied at 75% normal size)



Border #33



Combination Border:
31:1, 32:1 and 33:1

To sew the borders of design #33 as close to the letters as possible, select the border, then touch the positioning arrow  and move the needle all the way to the right. Then, using the positioning arrow  move the design all the way down. For the second, third and fourth one, rotate the design. 





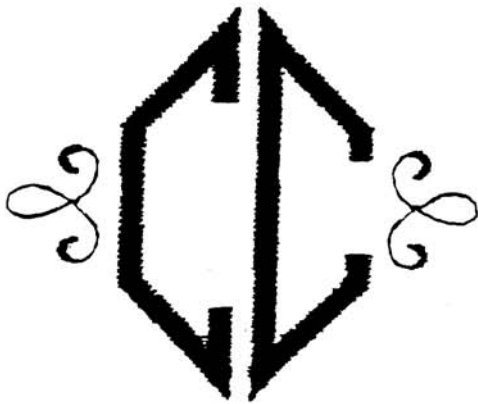
34 MENU 1




MENU 2 **34**



MENU 3 **34**



To sew the borders of design #34 as close to the two letter monograms as possible, select the border, then touch the  to move the needle all the way to the right. For the right border, touch side-to-side mirror image. 