



DESIGNER DIAMOND™ Technique Step by Step #10 -Buttonholes

Perfectly Balanced Sensor One-Step Buttonhole

The Exclusive SEWING ADVISOR™ feature will select the best buttonhole and stitch settings for your fabric.

Fabric should be interfaced and/or stabilized where buttonholes are to be sewn.

1. Select Sewing Mode.



2. On your Exclusive SEWING ADVISOR™ menu, touch Woven Medium.

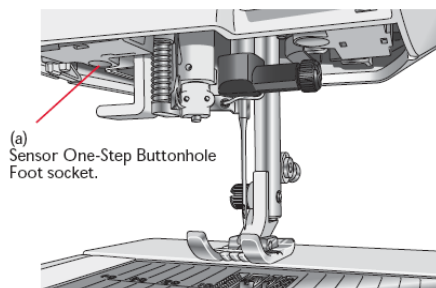


3. Touch Buttonhole




4. B1:2 Bartack Buttonhole was selected.

5. Plug the cord of the Sensor One-Step Buttonhole Foot into the port to the left underside in front of the Adjustable E LIGHT™ system (a). Snap on the Sensor One-Step Buttonhole Foot.



- To measure the button to determine the buttonhole size, place your selected button on the buttonhole ruler on the DESIGNER DIAMOND™ base plate.



- Use the + or – on the Button size control on the Ultimate Interactive Screen to set the size of the button in millimeters (mm). 
- Before sewing the buttonhole, line up the white area on the side of the wheel with the white marking line on the foot.
- Stitch the bartack buttonhole B1:2.



Place
Sample
Here

Exclusive SEWING ADVISOR™ Buttonholes:

- Your Exclusive SEWING ADVISOR™ feature will select the correct buttonhole for the type and weight of fabric you are sewing.

- On the Exclusive SEWING ADVISOR™ menu, select Woven Light



- Select Buttonhole



- The recommended Round End Buttonhole B1:4 is displayed on the Ultimate Interactive Screen. It also recommends the Sensor One-Step Buttonhole foot, which needle to use and to use stabilizer.



- Select Woven Medium.

- The Bartack Buttonhole B1:2 is selected.

- Continue selecting the other fabrics in the Exclusive SEWING ADVISOR™ menu and see the how the correct buttonhole is selected for each fabric type and weight.

Buttonholes:



BI:1 Wide Bartack Buttonhole with extra cutting space.
Stitch on medium to heavy fabric



Place
Sample
Here



BI:2 Bartack Buttonhole
Stitch on medium weight woven fabric.



Place
Sample
Here



BI:3 Round-End Bartack Buttonhole
Stitch on light weight fabric.



Place
Sample
Here



BI:4
Round End
For blouses and children's garments.
Stitch on Light weight fabric



Place
Sample
Here



BI:5 Heavy Reinforced Buttonhole
Stitch on heavy weight fabric.



Place
Sample
Here



BI:6 Medium Reinforced Buttonhole. See Users Guide for instructions on sewing a Manual Buttonhole. Stitch on medium weight fabric



Place
Sample
Here



BI:7 Medium Reinforced Decorative Buttonhole. Guide for instructions on sewing a Manual Buttonhole. Stitch on medium weight fabric



Place
Sample
Here



BI:8 Heirloom Buttonhole for hand look on fine and delicate fabrics. Stitch on Light Weight Fabric.



Place
Sample
Here



BI:8 Heirloom Buttonhole for jeans buttonhole: Touch increase length and width. Use thick thread. Stitch on denim



Place
Sample
Here



BI:9 Round-End Heirloom Buttonhole For hand look on fine and delicate fabrics. Stitch on fine fabric



Place
Sample
Here



BI:10 Keyhole Buttonhole Square end for tailored jackets, coats etc. Stitch on heavy fabric.



Place
Sample
Here

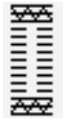


BI:11 Tapered Keyhole Buttonhole

Tapered end for tailored garments.
Stitch on medium to heavy weight fabric



Place
Sample
Here



BI:12 Heavy Duty Buttonhole

With reinforced Bartacks
Stitch on heavy weight fabric.



Place
Sample
Here



BI:13 Decorative Fashion Buttonhole

For most fabric weights.



Place
Sample
Here



BI:14 Leather Buttonhole (Straight Stitch)

For leather and suede



Place
Sample
Here



BI:15

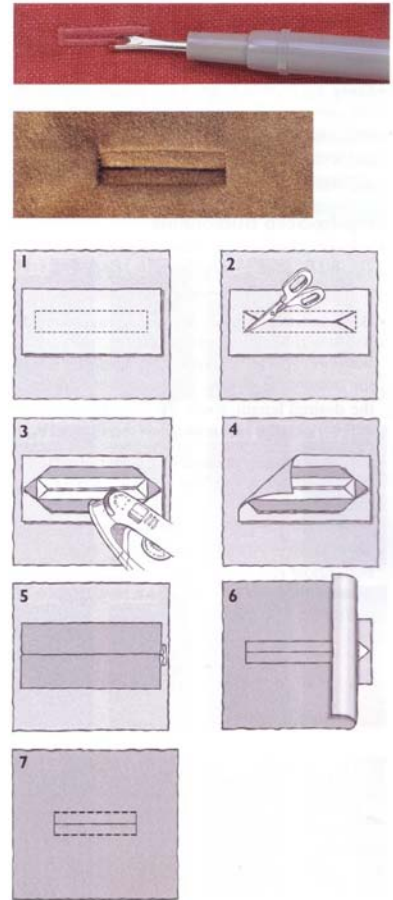
Bound Buttonhole with extra cutting space for bound buttonholes



Place
Sample
Here

Select Woven Medium on the SEWING ADVISOR™ menu.

1. Fabric needed: One piece chino and one piece cotton 2" x 3" (50mm x 80mm).
2. Place cotton piece and chino fabric right sides together and stitch buttonhole.
3. Cut the buttonhole down the center to 1/4" (6mm) from each end. Cut to the corners at each end to form a triangle as illustrated.
4. Press the end triangles and the sides away from the buttonhole.
5. Pull the cotton through the buttonhole opening to the wrong side.
6. Fold the cotton so the edges of the buttonhole are formed and meet at the center of the buttonhole opening forming a pleat at each end on the wrong side.
7. From the right side, fold back the end of the buttonhole to expose a triangle.
8. Touch Straight Stitch A1:2. Set the Stitch length to 1.5 and stitch across the base of each triangle catching the pleat of the rectangle to secure it. Topstitch the buttonhole from the right side "in the ditch".



The wrong side of a bound buttonhole is finished when the garment facing or lining is slit and hand stitched to the wrong side of the opening.

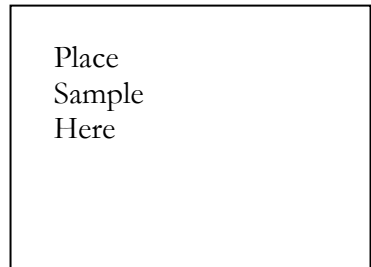


BI:16 Automatic Button Sewing for sewing on buttons.

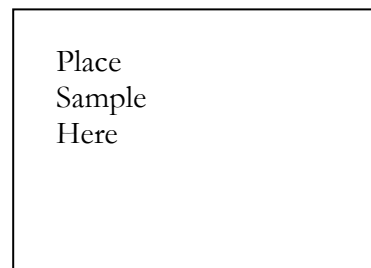
Remove the presser foot or use the Optional Button Foot with Placement Tool presser foot (Part #412934545).

Select the number of stitches on the Button Sew On icon.

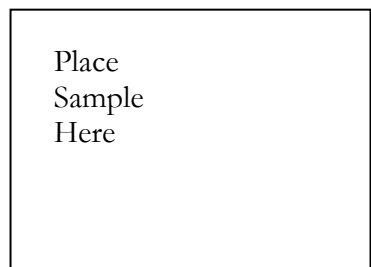
Place the button underneath the ankle or Button Foot. Move the handwheel to check that the needle will clear the holes. Sew button.



BI:17 Round Eyelet for belts, lacing eyelets and embellishments.



BI:18 Teardrop Eyelet for lacing eyelets and embellishments.





B19 Oval Eyelet for lacing eyelets, and embellishments.



Place
Sample
Here



B20 Decorative Fashion buttonhole for most weights of fabrics.



Place
Sample
Here